

Product datasheet for MR229766

Gprc5b (NM_001195774) Mouse Tagged ORF Clone

Product data:

Product Type:	Expression Plasmids
Product Name:	Gprc5b (NM_001195774) Mouse Tagged ORF Clone
Tag:	Myc-DDK
Symbol:	Gprc5b
Synonyms:	AW125761; Raig2
Mammalian Cell Selection:	Neomycin
Vector:	pCMV6-Entry (PS100001)
E. coli Selection:	Kanamycin (25 ug/mL)
ORF Nucleotide Sequence:	>MR229766 representing NM_001195774. Blue=ORF Red=Cloning site Green=Tag(s)

```
GCTCGTTTGTAGAACCGTCAGAATTTGTAAACGACTCACTATAGGGCGCCGGGAATTCGTCGACTG
GATCCGGTACCGAGGAGATCTGCCGCCGCGATCGCC
ATGTTCTCTGGTGTAGAGAGAAAGATGAGAACCATCAAGTGTTCCTTGCCCTGCTCCTGGTGATT
GCCTCCGTGGCTCAGAGAACGCCAGCAGTCCCGGGGCTGTGGACTGGACCTTCTCCTCAGTACGTG
TCCCTGTGCGACCTGGACGCCATCTGGGCATCGTGGTGGAGGCAGTGGCCGGGGCGGGGCCCTGATC
ACACTGCTTCTGATGCTCATTCTCTAGTGAAGTACCCTTCATCAAGGACAAGGAAAGGAAAGCGGCT
GTGTGCCCTCCATTTCTCTCTGCTGGGACCCTGGGCCTCTTGGCCTGACGTTTGCCTTCATCATC
CAGATGGACGAGACAATCTGCTCCATCCGACGCTTCTCTGGGGTGTCTCTCGCGCTCTGCTTTTCC
TGCTGCTGAGCCAGGCGTGGCGGGTGGGAGGCTGGTGGCCAGGGCACAAGCCCGGCCAGCTGGCAG
CTGGTGAAGCTGGCACTGTGCTGATGCTGGTGCAGGTATCATTGCCACTGAGTGGCTGGTGTGACT
GTGCTGCGTGACACGAAGCCAGCCTGCGCTACGAGCCATGGATTTTGTGATGGCGCTCATCTACGAC
ATGGTGTGCTGGCCATCACCTGGCCAGTCCCTCTTACGCTGTGTGGCAAGTTCAAACGGTGGAAAG
GTGAACGGAGCCTTATCCTCGTCACTACCTTCTCTCTGCGCTCATCTGGGTGGTCTGGATGACCATG
TACCTCTCGGCAACTCATTAAATTAAGCAGGGAGATGCCTGGAGCGACCCACCTTGGCCATTACACTG
GCAGCCAGCGGATGGGTCTTTGTATCTTCCATGCCATTCCGGAGATCCACTACACCTTCTCCCACCC
CTGCAGGAGAACCACCAACTACTTCGACACTTCACAGCCCAGGATGCGGGAGACAGCATTTGATGAG
GAAATGCACCTGCCTCGGGCCTACATGGAGAACAAGGCCTTCTCAATGGATGAACATAACCGAGCTCTC
CGATCAGCAGTGGGCTTTTCCAATGGAAGCTTGGAGCAAAGATCTAGCAGCCTGGGAAAGAACCCAGC
AGCTTGGGAAACCGCCAGTGCACCGTTCAGAAGCAATGTGTATCAGCCGACCGAGATGGCCGTCGTG
CTCAATGGAGGGACTGAAATGGCTGTCCATCCCCGCTCTCTGGAGTCTTTGGAGCTTTT
ACGCGTACGCGGCCGCTCGAGCAGAACTCATCTCAGAAGAGGATCTGGCAGCAATGATATCCTGGAT
TACAAGGATGACGACGATAAGGTTTAAACGGCCGCGC
```



[View online »](#)

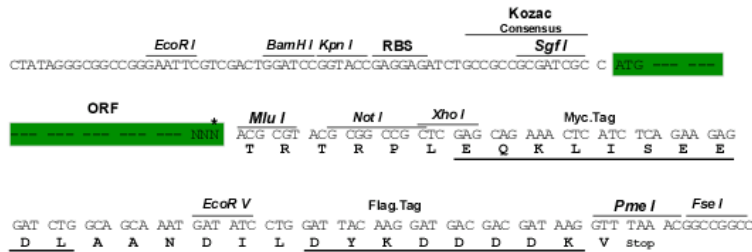
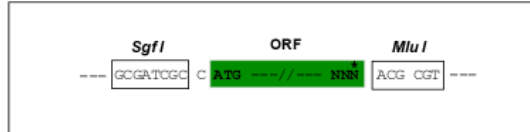
Protein Sequence: >Peptide sequence encoded by MR229766
 Blue=ORF Red=Cloning site Green=Tag(s)

MFLVLERKMRTHQVFPPLPLLLVIASVASENASTSRGCGLDLLPQYVSLCDLDAIWGIVVEAVAGALI
 TLLLMLILLVRLPFIDKDKRKPVCLHFLFLLGLGLFGLTFAFIIQMDETICSIRRFLWGLFALCF
 CLLSQAWRVRRLVROGTSPASWQLVSLALCLMLVQVIIATEWLVLTVLRDTKPACAYEPMDFV
 MALLAITLAQSLFTLCGKFKRWKVNAGAFILVTTFLSALIWWVMTMYLFGNSLIKQGDWSDPT
 LAITL AASGWVFIHAIPEIHHTLLPPLQENPPNYFDTSQPRMRETAFADEEMHLP
 RAYMENKAFSMDEHNAAL RSAVGFSNGSLEQRSSSLGKKPSSLGNRPSAPFRSNVYQPT
 EMVVLNGGTEMAVHPRSLESFGAF **TRTRPLEQKLISEEDLAANDILDYKDDDDKV**

Restriction Sites: SgfI-MluI

Cloning Scheme:

Cloning sites used for ORF Shuttling:



* The last codon before the Stop codon of the ORF

ACCN: NM_001195774

ORF Size: 1233 bp

OTI Disclaimer: The molecular sequence of this clone aligns with the gene accession number as a point of reference only. However, individual transcript sequences of the same gene can differ through naturally occurring variations (e.g. polymorphisms), each with its own valid existence. This clone is substantially in agreement with the reference, but a complete review of all prevailing variants is recommended prior to use. [More info](#)

OTI Annotation: This clone was engineered to express the complete ORF with an expression tag. Expression varies depending on the nature of the gene.

Components: The ORF clone is ion-exchange column purified and shipped in a 2D barcoded Matrix tube containing 10ug of transfection-ready, dried plasmid DNA (reconstitute with 100 ul of water).

Reconstitution Method:

1. Centrifuge at 5,000xg for 5min.
2. Carefully open the tube and add 100ul of sterile water to dissolve the DNA.
3. Close the tube and incubate for 10 minutes at room temperature.
4. Briefly vortex the tube and then do a quick spin (less than 5000xg) to concentrate the liquid at the bottom.
5. Store the suspended plasmid at -20°C. The DNA is stable for at least one year from date of shipping when stored at -20°C.

RefSeq: [NM_001195774.1](#), [NP_001182703.1](#)

RefSeq Size: 2558 bp

RefSeq ORF: 1236 bp

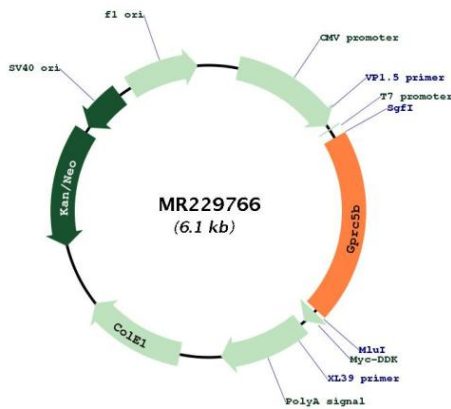
Locus ID: 64297

Cytogenetics: 7 F2

MW: 46 kDa

Gene Summary: Unknown. This retinoic acid-inducible G-protein coupled receptor provide evidence for a possible interaction between retinoid and G-protein signaling pathways (By similarity). [UniProtKB/Swiss-Prot Function]

Product images:



Circular map for MR229766