

Product datasheet for MR229734

BC030499 (NM_001287206) Mouse Tagged ORF Clone

Product data:

Product Type: Expression Plasmids
 Product Name: BC030499 (NM_001287206) Mouse Tagged ORF Clone
 Tag: Myc-DDK
 Symbol: BC030499
 Synonyms: BC037104; Sgk494
 Mammalian Cell Selection: Neomycin
 Vector: pCMV6-Entry (PS100001)
 E. coli Selection: Kanamycin (25 ug/mL)
 ORF Nucleotide Sequence: >MR229734 representing NM_001287206
 Red=Cloning site Blue=ORF Green=Tags(s)

TTTTGTAATACGACTCACTATAGGGCGGCCGGAATTCGTCGACTGGATCCGGTACCGAGGAGATCTGCC
 GCC**CGATCGCC**

ATGGGAGCAGTAAGCTGTCGGCAGGGACAACACACCCGGGTGTCTGCTCCTCAGAAGGGTGACAACATCC
 AGGGTCACTGGGTCCAAGGCTGGAAGAGCCTCTGGTGTGGATGGGGACCATCAGGTCAGGTCGGAAGA
 ACTATGGGACTACAGAGGCATCAGTGCCTACATCAGGAGCTGCTCCAGCCAGCCCCACTGCTACTAGAG
 AAGCCTCAGTCTGAGTGGCCAGTGCCTCAGTTCATCAGCCTCTTTCTACCAGAGTTTCCCGTGAGGCCTG
 TTAGGGAGCAGCAGGAGCTGAAGATTTTAGGCCTTGTGGCTAAAGGTTGTTTGGAACTGCTCTGAAAGT
 GCTAGATTGTGCCAGAAAGCTGTATTTGCAGTGAAGGTGGTGCCTAAAGTAAAAGTTCTACAGCGGGAT
 ACGCTGAGGCAGTGCAAAGAAGAGGTTAGCATCCAGCGACAGATCAACCATCCTTTTGTACACAGTTTGG
 GGGACAGCTGGCAGGGGAAACAACACCTCTTATTATGTGTAGCTACTGCAGCATGGATCTCTACTCCCT
 GTGGTCTACTGTTGGTTGGTTCCAGAGGATTCTATCCGCTCTTTGCAGCTGAAGTGGTCTTGTACTG
 TGCTATCTCCAGACTTGGGTATCATCCACCGTGTAAAGATGGAGAATATCCTGCTGGATGAACGAG
 GCCATCTGAAAGTGACAGACTTTGGTCTGTCTCGCCACCTATCCAGGGAGCAGCAGCCTACACTATCTG
 CGGCACCTTCAATACATGGCCCCAGAGGTCCTGAGTGGTGGCCTTACAACCACACTGCTGACTGGTGG
 TCCCTGGGTGTGTTGCTTTTCTCTGGCAACTGGTAAGTTTCCAGTGGCTGCAGAGAGATCATGTGG
 CTATGTTGGCAAGTGTGGCCACTGTGAATCTGAGATCCCAGCGTCTATTAATCAGGAGCTCTCACTCCT
 GCTCCATGAGCTTTATGCCAGAACCCTCTGCATCGTCTACGATACCTGCATCACTTCCAGTCCACCCG
 TTCTTTGGGGTGTAGCCTTTGACCCTGAGCTCTACAGAAGCAGCCAGTGAAGTTTGTGATGGAGAAAC
 AAGATACCTGGCCTAGTCCACTGGAGTCCATGTCTTCGAGGACTTTGACTATGATCTGGAGTCTTGGT
 CCACTCCATCTATTGATTCCTAT

ACGCGTACGCGGCCGCTCGAGCAGAAACTCATCTCAGAAGAGGATCTGGCAGCAAATGATATCCTGGATT
 ACAAGGATGACGACGATAAGGTTTAA



[View online >](#)

Protein Sequence: >MR229734 representing NM_001287206
 Red=Cloning site Green=Tags(s)

MGAVSCRQGQHTRVSAPQKGDNIQGHVVGWKSLSWCGMGTIRSGLEELWGLQRHQCLHQELLQPAPLLLE
 KPQSEWPVPQFISLFLPEFPVPRVREQQELKILGLVAKGSFGTVLKVLDCAQKAVFAVKVVPKVKVLQRD
 TLRQCKEEVSIQRQINHPFVHSLGDSWQKQHLFIMCSYCSMDLYSLWSTVGWFPEDSIRLFAAELVVL
 CYLHDLGIHRDVKMEIILLDERGHLKVTDFGLSRHLSQGARAYTICGTLQYMAPEVLSGGPYNHTADWW
 SLGVLLFSLATGKFPVAAERDHSVAMLASVAHCESEIPASINQELSLLLHELLCQNPLHRLRYLHHFQVHP
 FFRGVAFDPELLQKQPVNFMVKQDTWPSPLESMSFEDFDYDLESLVHSISIDSY

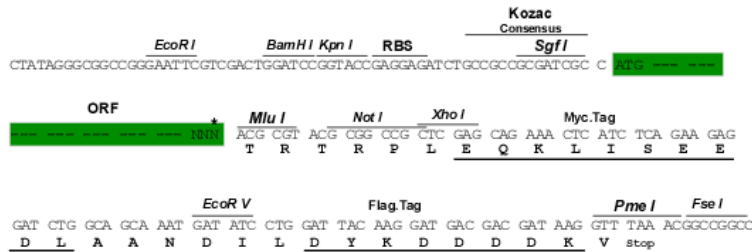
TRTRPLEQKLISEEDLAANDILDYKDDDDKV

Restriction Sites:

SgfI-MluI

Cloning Scheme:

Cloning sites used for ORF Shuttling:



* The last codon before the Stop codon of the ORF

ACCN: NM_001287206

ORF Size: 1215 bp

OTI Disclaimer: The molecular sequence of this clone aligns with the gene accession number as a point of reference only. However, individual transcript sequences of the same gene can differ through naturally occurring variations (e.g. polymorphisms), each with its own valid existence. This clone is substantially in agreement with the reference, but a complete review of all prevailing variants is recommended prior to use. [More info](#)

OTI Annotation: This clone was engineered to express the complete ORF with an expression tag. Expression varies depending on the nature of the gene.

Components: The ORF clone is ion-exchange column purified and shipped in a 2D barcoded Matrix tube containing 10ug of transfection-ready, dried plasmid DNA (reconstitute with 100 ul of water).

- Reconstitution Method:**
1. Centrifuge at 5,000xg for 5min.
 2. Carefully open the tube and add 100ul of sterile water to dissolve the DNA.
 3. Close the tube and incubate for 10 minutes at room temperature.
 4. Briefly vortex the tube and then do a quick spin (less than 5000xg) to concentrate the liquid at the bottom.
 5. Store the suspended plasmid at -20°C. The DNA is stable for at least one year from date of shipping when stored at -20°C.

RefSeq: [NM_001287206.1](#), [NP_001274135.1](#)

RefSeq Size: 3245 bp

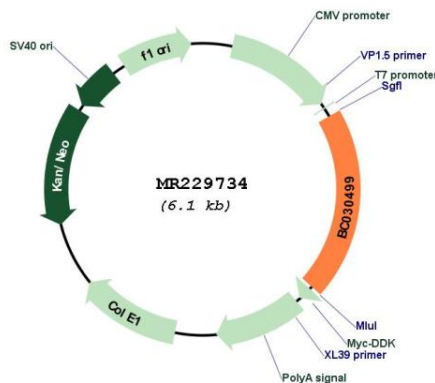
RefSeq ORF: 1218 bp

Locus ID: 216976

Cytogenetics: 11 B5

MW: 46.6 kDa

Product images:



Circular map for MR229734