

## Product datasheet for MR229724

### Cant1 (NM\_001267591) Mouse Tagged ORF Clone

#### Product data:

Product Type:	Expression Plasmids
Product Name:	Cant1 (NM_001267591) Mouse Tagged ORF Clone
Tag:	Myc-DDK
Symbol:	Cant1
Synonyms:	5830420C20Rik; Apy; Apy1h; D11Bwg0554e; Entpd8; SCA; SCAN-1; Sh; Shapy
Mammalian Cell Selection:	Neomycin
Vector:	pCMV6-Entry (PS100001)
E. coli Selection:	Kanamycin (25 ug/mL)
ORF Nucleotide Sequence:	>MR229724 ORF sequence Red=Cloning site Blue=ORF Green=Tags(s)

TTTTGTAATACGACTCACTATAGGGCGGCCGGAATTCGTCGACTGGATCCGGTACCGAGGAGATCTGCC  
GCC**CGATCGCC**

ATGCCATCCAGCCCTTTGACCAGCGGGAATGGAATGAGCCTATGCACTCCCTCCGGATCAGTGTAGGGG  
GCCTTCTGTGCTGGCATCCATGACCAAGGCCACGGACCCTCGCTTCCGCCCCCGCTGGCGGGTATCCT  
CACGTCTTTGTGGTGTGCCCTCTCTGGCTGCTGTACTCCACCATCAGGGCCAGTGCCAGGCAGG  
CCCCCACCACAATGCGACAATTGGAGGCTCAGCCAGCAGCGCATCTCTATTACAACGACACCTACC  
CCCTCTCCCCCACAGAGGACTCCAGGTGGGATTCGGTACCGAATCGCAGTCATTGCTGACTTGGACAC  
GGGTCCAGGGCCAGGAAGAAAACACTTGGTTTTAGCTACCTTAAGAAAGGCTACCTGACCTGTGGAC  
AGCGGGGACAGGGTCAGCGTGGAGTGGGATAAAGACCACGGGGTCTAGAGTCCCACCTGGCAGAAAAGG  
GGCGGGGCATGGAGCTCTCAGACCTGATTGCTTCAATGGGAACTCTACTCCGTGGATGACCGCACAGG  
GGTCATCTACCAGATCGAAGGCACCAAAGCAGTGCCCTGGGTGATCCTTTCTGATGGCGATGGAAGTGTG  
GAGAAGGGTTTCAAAGCTGAATGGCTTGTGTGAAGGACGAAACCTGTATGTGGCGCCCTGGGCAAGG  
AGTGGACCACCACGACAGGGGAGGTGATGAACGAGAACCCTGAGTGGGTGAAGGTGGTAGGCCACAGGG  
CAGTGTGGACCACGAGAAGTGGGTGTCCAGCTACAACGCCCTGAGAGCAGCCGCCGGATCCGACCACCA  
GGCTACCTCATTACGAGTCCGCTGCTGGAGCGACACACTGCAGCGCTGTTCTTCTGCCTCGTCGGG  
CTAGCCACGAACGCTACAGCGAGAAGGACGATGAACGCAAGGGCAGCAACCTCCTGCTGAGCGCAGCCCA  
GGACTTCAGGGACATCTCTGTGAGGCAAGTGGGACTCTGATCCCCACCCACGGTTCTCATCCTTCAAA  
TTCATCCCCAACCGGATGACCAGATCATCGTGGCTCTCAAGTCGGAAGAGGACAATGGCAGAATCGCCA  
CCTATGTCATGGCCTTACGCTGGACGGCCGCTTCTGCTTCCAGAGACCAAGATCGGCACTGTGAAGTA  
CGAAGGAATAGAGTTCATC

**ACGGT**ACGGGCCGCTCGAGCAGAACTCATCTCAGAAGAGGATCTGGCAGCAATGATATCCTGGATT  
ACAAGGATGACGACGATAAGGTTTAA



**Protein Sequence:** >MR229724 protein sequence  
 Red=Cloning site Green=Tags(s)

MPIQPFQREWNEPMHSLRISVGGLPVLASMTKATDPRFRPRWRVILTSFVGAALLWLLYSHHQGPVPGR  
 PPTHNAHNWRLSQQRISHYNDTYPLSPQRTPGGIRYRIAVIADLTGSRAQEENTWFSYLKKGYLTLSD  
 SGDRVSVWEDKDHGVLESHLAEKGRGMELSDLIVFNGLYSVDDRTGVIYQIEGTAKVPWVILSDGDGTV  
 EKGFKAEWLAVKDEHLYVGGGLGKEWTTTTGEVMNENPEWVKVVGHRGSDHENWVSSYNALRAAAGIRPP  
 GYLIIHESACWSDLQRWFLLPRRASHERYSEKDDERKGSNLLLAAQDFRDISVRQVGTLLIPTHGFSSFK  
 FIPNTDDQIIVALKSEEDNGRIATYVMAFTLDGRFLLPETKIGTVKYEGIEFI

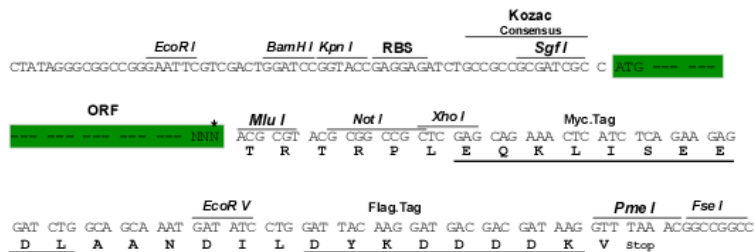
TRTRPLEQKLISEEDLAANDILDYKDDDDKV

**Restriction Sites:**

SgfI-MluI

**Cloning Scheme:**

Cloning sites used for ORF Shuttling:



\* The last codon before the Stop codon of the ORF

**ACCN:** NM\_001267591

**ORF Size:** 1209 bp

**OTI Disclaimer:** The molecular sequence of this clone aligns with the gene accession number as a point of reference only. However, individual transcript sequences of the same gene can differ through naturally occurring variations (e.g. polymorphisms), each with its own valid existence. This clone is substantially in agreement with the reference, but a complete review of all prevailing variants is recommended prior to use. [More info](#)

**OTI Annotation:** This clone was engineered to express the complete ORF with an expression tag. Expression varies depending on the nature of the gene.

**Components:** The ORF clone is ion-exchange column purified and shipped in a 2D barcoded Matrix tube containing 10ug of transfection-ready, dried plasmid DNA (reconstitute with 100 ul of water).

**Reconstitution Method:**

1. Centrifuge at 5,000xg for 5min.
2. Carefully open the tube and add 100ul of sterile water to dissolve the DNA.
3. Close the tube and incubate for 10 minutes at room temperature.
4. Briefly vortex the tube and then do a quick spin (less than 5000xg) to concentrate the liquid at the bottom.
5. Store the suspended plasmid at -20°C. The DNA is stable for at least one year from date of shipping when stored at -20°C.

**RefSeq:** [NM\\_001267591.1](#), [NP\\_001254520.1](#)

**RefSeq Size:** 2758 bp

**RefSeq ORF:** 1212 bp

**Locus ID:** 76025

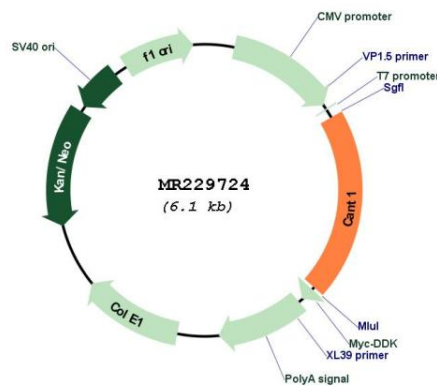
**UniProt ID:** [Q8VCF1](#)

**Cytogenetics:** 11 83.15 cM

**MW:** 45.7 kDa

**Gene Summary:** The protein encoded by this gene is a calcium-dependent nucleotidase that preferentially hydrolyzes UDP, GDP, and IDP. The encoded protein has low activity with ADP and ATP and shows no activity with AMP and GMP. Several transcript variants encoding two different isoforms have been found for this gene. [provided by RefSeq, Jun 2012]

### Product images:



Circular map for MR229724