

Product datasheet for MR229701

B3gnt9 (NM_001271915) Mouse Tagged ORF Clone

Product data:

Product Type:	Expression Plasmids
Product Name:	B3gnt9 (NM_001271915) Mouse Tagged ORF Clone
Tag:	Myc-DDK
Symbol:	B3gnt9
Synonyms:	3-Gn-T9; B3gnt9-ps; beta-1; beta3Gn-T9; BGnT-9; C76565; C76566
Mammalian Cell Selection:	Neomycin
Vector:	pCMV6-Entry (PS100001)
E. coli Selection:	Kanamycin (25 ug/mL)
ORF Nucleotide Sequence:	>MR229701 ORF sequence Red=Cloning site Blue=ORF Green=Tags(s)

TTTTGTAATACGACTCACTATAGGGCGGCCGGGAATTCGTCGACTGGATCCGGTACCGAGGAGATCTGCC
GCC**GCGATCGCC**

ATGAGGAGGAGGAGGAGGCCGCGCCTTTGCCAGACGCGTGGCTTACGCTGCTGCTCAGCGCCGCCCTCG
GACTCTGCTCTACGCGCAGCGGACGTGGCATCCCCACGACCAGACCAGCGCGAGGACCCAGCT
CCCGCGGCCACTCCTAGCCTCCGAGCACGCGAGCTCCCTAACACCGCCCGCGGCCCGCTGGCCTAC
GAGGGGACACTCCGGTGCCGCCACACCTACGGACCCCTTTGACTTCGGCGGGTATCTGCGGCCAAGG
ACCAACGCGCTTCCCGCTGCTCATTAAACAGCGTCGAAATGCCGACGCGACGGCGCATCCGGCGGTTT
GCCGGACTGCTCATCGCTGTCAAGTCTGTGGCTGCGGACTTTGAGCGCGGGAAGCCGTTCCGCCAGACT
TGGGGAGCCGAGGGTCCGCTGCAGGGGGCACTCGTGCGCCGAGTGTCTTGTGGGCGTCCCAAGGGGG
CGGGCTCTGGCGGGCAGGCACCCGTTCCGACTGGCGCACCCCTGCTGGAGGCGGAGAGCCGAGCTTATGC
AGACATTTCTGCTCTGGGCTTTCGAAGACACCTTTTTCAATCTAACGCTGAAGGAGATTCACTTTCTATCT
TGGCCTCAGCATTCTGTCCAGATGTACACTTTGTTTTAAGGGCGATGCAGATGTGTTGCTGCACGTGA
GGAACCTGCTGCAGTTTCTGGAGCTCCGGGATCCCGCACAGGACCTTCTTGGGGTATGTGATTGTGCA
GGCAAGGCAAATCCGAGCTAGAGCCAGCAAGTACTTATTCCCGGGCTGTGTATGGACTGCCGTTTAC
CCTGCCACGCAGGTGGCGGGCTTTGTTCTTTCCGGGAGCCAGCTCCGCCCTAGCTGATGCTTTGCT
CACAAGTTGAGCTTTTCCATAGACGATGCTTTCTAGGCATGTGTTTGCAGCGCTTGGGCTCACACC
AGAGCCTCATCCAGCTTTCCGACCTTTGGCATCTCCAGCCTTCAGCTGCACCTCATCTTCAACCTTT
GACCCCTGTTTACCGAGAAGTGGTGGTAGTACATGGGCTGTCTGCAGCTGACATCTGGCTTATGTGGC
GCTTGTGATGGGCTCAGGGCCAGTCTGTGCACATCCGACGCTGTGGCAACAGGTCCCTTCCAATG
GAATCT

AG**CGGACCG**ACGCGTACGCGGCCGCTCGAGCAGAACTCATCTCAGAAGAGGATCTGGCAGCAAATGATATCC
TGGATTACAAGGATGACGACGATAAGGTTTAA



[View online »](#)

Protein Sequence: >MR229701 protein sequence
Red=Cloning site Green=Tags(s)

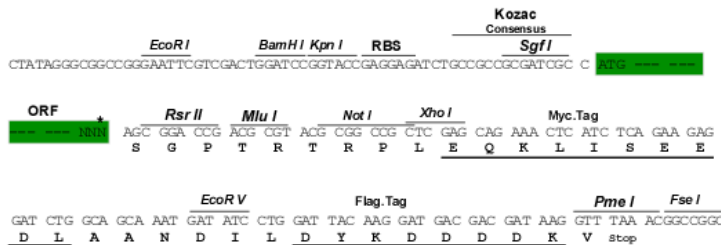
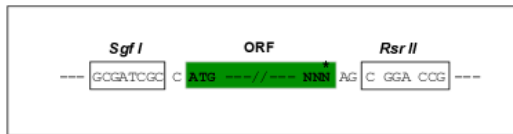
MRRRRRRLCPDAWL TLLL SAALG LLL YAQRDVASPTTRPPARGPQLPRPTPSLRARELPNTARAAPLAY
 EGDTVPVPTPTDFDFGGYLRAKDQRRFPLLINQRRKCRSDGASGGSPDLLIAVK SVAADFERREAVRQT
 WGAEGRVQ GAL VRRVFL LGVPKGAGSGGAGTRSHWRTLLEAESRAYADILLWAFEDTFFNLTKEIHFLS
 WASAFCPDVHFVFKGDADV FVHVRNLLQFLELRDPAQDLLAGDVIVQARPIRARASKYFIPRAVYGLPVY
 PAYAGGGFVLSGATLRR LADAC SQVELFPID DVFLGMCLQRLRLTPEPHPAFRTFGISQPSAAPHLRTF
 DPCFYRELVVVHGLSAADIWLMWRLLHGPQGPVCAHPQP VATGPFQWNS

SGPTRTRPLEQKLI SEEDLAANDILDYKDDDDKV

Restriction Sites: SgfI-RsrII

Cloning Scheme:

Cloning sites used for ORF Shutting:



* The last codon before the Stop codon of the ORF

ACCN: NM_001271915

ORF Size: 1200 bp

OTI Disclaimer: The molecular sequence of this clone aligns with the gene accession number as a point of reference only. However, individual transcript sequences of the same gene can differ through naturally occurring variations (e.g. polymorphisms), each with its own valid existence. This clone is substantially in agreement with the reference, but a complete review of all prevailing variants is recommended prior to use. [More info](#)

OTI Annotation: This clone was engineered to express the complete ORF with an expression tag. Expression varies depending on the nature of the gene.

Components: The ORF clone is ion-exchange column purified and shipped in a 2D barcoded Matrix tube containing 10ug of transfection-ready, dried plasmid DNA (reconstitute with 100 ul of water).

Reconstitution Method:

1. Centrifuge at 5,000xg for 5min.
2. Carefully open the tube and add 100ul of sterile water to dissolve the DNA.
3. Close the tube and incubate for 10 minutes at room temperature.
4. Briefly vortex the tube and then do a quick spin (less than 5000xg) to concentrate the liquid at the bottom.
5. Store the suspended plasmid at -20°C. The DNA is stable for at least one year from date of shipping when stored at -20°C.

RefSeq: [NM_001271915.1](#), [NP_001258844.1](#)

RefSeq Size: 2533 bp

RefSeq ORF: 1200 bp

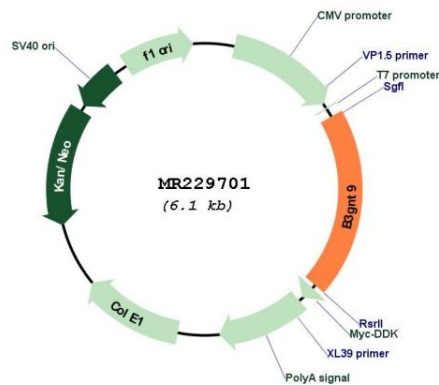
Locus ID: 97440

UniProt ID: [Q8VI16](#)

Cytogenetics: 8 D3

MW: 44.2 kDa

Product images:



Circular map for MR229701