

Product datasheet for MR229691

Chit1 (NM_001284524) Mouse Tagged ORF Clone

Product data:

Product Type: Expression Plasmids
Product Name: Chit1 (NM_001284524) Mouse Tagged ORF Clone
Tag: Myc-DDK
Symbol: Chit1
Synonyms: 2300002L19Rik
Vector: pCMV6-Entry (PS100001)
E. coli Selection: Kanamycin (25 ug/mL)
Cell Selection: Neomycin
ORF Nucleotide Sequence: >MR229691 representing NM_001284524
 Red=Cloning site Blue=ORF Green=Tags(s)

TTTTGTAATACGACTCACTATAGGGCGCCGGGAATTCGTCGACTGGATCCGGTACCGAGGAGATCTGCC
 GCC**CGGATCGCC**

ATGGTGCAGTCCCTGGCCTGGGCAGGTGTGATGACTCTGCTGATGGTCCAGTGGGCTCTGCTGCAAAAC
 TGGTCTGCTACCTACCAACTGGTCCCAGTACCGGACGGAGGCAGTTCGGTTCCTTCCCAGGGATGTGGA
 TCCCAACCTGTGTACCCACGTCACTTTGCTTTTGGTGAATGGACAACCATCAGCTCAGCACTGTGGAG
 CACAATGACGAACCTCTCTACCAGGAGCTGAACAGCCTAAAGACTAAGAACCCCAAGCTCAAGACCCCTGT
 TAGCCGTTGGAGGCTGGACCTTTGGTACCCAGAAGTTCACAGACATGGTGGCCACCGCCAGCAACCCGGCA
 GACCTTTGTGAAGTCAGCCCTAAGTTTCTGCGCACTCAAGGTTTTGATGGCCTTGACCTTGACTGGGAG
 TTCCCAGGTGGACGTGGGAGCCCAAGTAGACAAAGAGAGATTACAGCCCTGATACAGGACTTGGCCA
 AAGCCTTCCAGGAGGAAGCCAGTCTCAGGGAAGGAACGCCCTCTTCTGACTGCAGCTGTACCGAGTGA
 TCGAGGCTGGTGGATGCTGGCTACGAGGTGGACAAGATTGCCAGAGCTGGATTTTCATCAACCTTATG
 GCCTACGACTTCCACAGCTCCTTGAAAAGACCACAGGGCATAACAGCCCCCTACAAAAGGCAAGGAG
 AAAGTGGGGCAGCCGCTGAGCAAAACGTGGATGCTGCTGTGACGCTCTGGCTCAGAAAGGGGACCCAGC
 CAGCAAACTGATCCTGGCATGCCTACCTATGGACGCTCTTTCACCTGGCCTCCTCGTCAGACAATGGA
 GTTGGGGCCCCAGCCACAGGGCCTGGTGGCCAGGCCCTATACGAAGGACAAAGGGTCTGGCTTACT
 ATGAGGCTGCTCCTGGAAGGAAAGACACAGAATCGAGGACCAGAAGGTGCCTTACGCCCTCCAGGACAA
 CCAGTGGGTGAGCTTTGACGACGTGAAAGCTTCAAAGCCAAGGCAAGCTGATGGGGTCTACCCCAACC
 CTGGAGACGAGTCCACTTACTACAACGTGGAGGAGGGCGGCTGTTCCAGCAGAGCTGTCTCCAGGCCCT
 GGTGTTTAGAGCCTTTGCAATGTTGTACCTGGAGCTAAGTTCCTGGAACCCCATCAACTCCAGTC

ACGCGTACGCGGCCGCTCGAGCAGAAACTCATCTCAGAAGAGGATCTGGCAGCAAATGATATCCTGGATT
 ACAAGGATGACGACGATAAGGTTTAA



[View online »](#)

Protein Sequence: >MR229691 representing NM_001284524
Red=Cloning site Green=Tags(s)

MVQSLAWAGVMTLLMVQWGSAAKLVCYL TNWSQYRTEAVRFFPRDVPNLCTHVIFAFAGMDNHQLSTVE
 HNDLLYQELNSLKTKNPKLKTLLAVGGWTFGTQKFTDMVATASNRQTFVKSALSFLRTQGFGLDLDWE
 FPGGRGSPTVDKERFTALIQDLAKAFQEEAQSSGKERLLLTAAVPSDRGLVDAGYEVDKIAQSLDFINLM
 AYDFHSSLEKTTGHNSPLYKRQGESGAAAEQNVDAAVTLWLQKGT PASKLILGMPTYGRSFTLASSSDNG
 VGAPATPGAPGPYTKDKGVLAYYEACSWKERHRIEDQKVPYAFQDNQWVSFDDVESFKAKAKLMGSTPT
 LETSPLTTTVEEGCSSRAVLQAWCLEPLANVVP GAKFLEPHPTPV

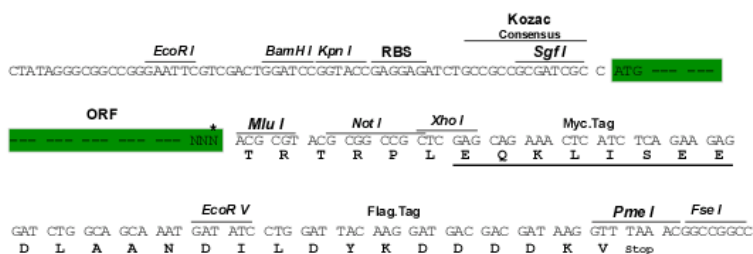
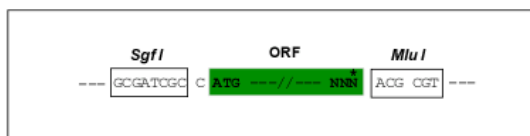
TRTRPLEQKLISEEDLAANDILDYKDDDDKV

Restriction Sites:

SgfI-MluI

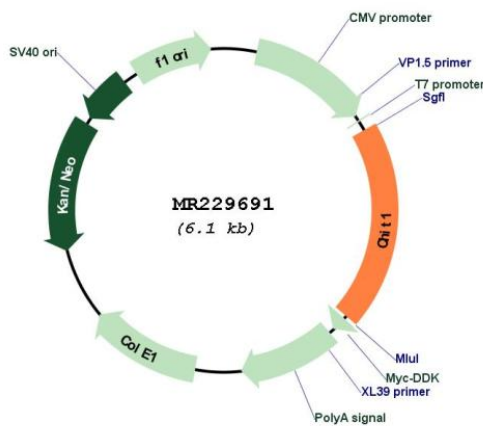
Cloning Scheme:

Cloning sites used for ORF Shuttling:



* The last codon before the Stop codon of the ORF

Plasmid Map:



ACCN: NM_001284524

ORF Size:	1188 bp
OTI Disclaimer:	The molecular sequence of this clone aligns with the gene accession number as a point of reference only. However, individual transcript sequences of the same gene can differ through naturally occurring variations (e.g. polymorphisms), each with its own valid existence. This clone is substantially in agreement with the reference, but a complete review of all prevailing variants is recommended prior to use. More info
OTI Annotation:	This clone was engineered to express the complete ORF with an expression tag. Expression varies depending on the nature of the gene.
Components:	The ORF clone is ion-exchange column purified and shipped in a 2D barcoded Matrix tube containing 10ug of transfection-ready, dried plasmid DNA (reconstitute with 100 ul of water).
Reconstitution Method:	<ol style="list-style-type: none">1. Centrifuge at 5,000xg for 5min.2. Carefully open the tube and add 100ul of sterile water to dissolve the DNA.3. Close the tube and incubate for 10 minutes at room temperature.4. Briefly vortex the tube and then do a quick spin (less than 5000xg) to concentrate the liquid at the bottom.5. Store the suspended plasmid at -20°C. The DNA is stable for at least one year from date of shipping when stored at -20°C.
RefSeq:	NM_001284524.1 , NP_001271453.1
RefSeq Size:	1580 bp
RefSeq ORF:	1191 bp
Locus ID:	71884
UniProt ID:	Q9D7Q1
Cytogenetics:	1 E4
MW:	43.9 kDa
Gene Summary:	Degrades chitin, chitotriose and chitobiose. May participate in the defense against nematodes and other pathogens (By similarity).[UniProtKB/Swiss-Prot Function]