

Product datasheet for **MR229628**

Gabpb1 (NM_001271468) Mouse Tagged ORF Clone

Product data:

Product Type: Expression Plasmids
Product Name: Gabpb1 (NM_001271468) Mouse Tagged ORF Clone
Tag: Myc-DDK
Symbol: Gabpb1
Synonyms: BABPB2; E4TF1; E4TF1-47; E4TF1-53; E4Tf1B; GABPB; GABPB-1; GABPB-2; GABPB1-1; GABPB1-2; NRF2B1
Vector: pCMV6-Entry (PS100001)
E. coli Selection: Kanamycin (25 ug/mL)
Cell Selection: Neomycin
ORF Nucleotide Sequence: >MR229628 representing NM_001271468
Red=Cloning site Blue=ORF Green=Tags(s)

TTTTGTAATACGACTCACTATAGGGCGGCCGGAATTCGTCGACTGGATCCGGTACCGAGGAGATCTGCC
GCC**CGATCGCC**

ATGTCCTGGTAGATTTGGGAAGAAGCTTTTAGAAGCGGCACGAGCCGGTCAAGATGATGAAGTTCGCA
TTTTGATGGCAAATGGAGCTCCTTTACTACAGACTGGTTGGAACTTCTCCACTTCATCTGGCCGCACA
GTATGGGCATTTCTCTACCACAGAGTTCTTCTCCGAGCCGGTGAAGTAGAGATGCCAGGACCAAAGTG
GACCGGACACCACTGCACATGGCGGCTTCTGAGGGCCATGCCAACATAGTAGAAGTTTTGCTTAAGCATG
GTGCTGACGTCAATGCAAAGGATATGTTAAAGATGACAGCTCTGCATTGGCAACAGAACAATCATCA
AGAGGTGGTGGAGCTTTAATCAAATATGGTGTGATGTACACACGCAGAGTAAATTTGTAAAACCTGCA
TTTGATATTTCAATAGACAATGGAATGAAGATTTAGCAGAGATATTACAGATTGCTATGCAGAACCAAA
TCAACACCAACCCGGAGAGTCTGACACTGTGACAATACACGCTGCCACACCACAGTTTCATCATTGGACC
CGGAGGGGTGGTGAACCTCACAGATGAAACAGGAGTATCTGCTGTTCAAGTTTGGAACTCCTCTACGTCA
GTATTAGCTACGTTAGCTGCCTTAGCTGAAGCTTCTGCCCATTTGTCCAATTTCTCAGAACTCCAGTAG
TGGCCACAGAGGAAGTGGTTACCGCAGAATCTGTGGATGGTGAATTCAGCAAGTAGTTAGCTCAGGGGG
TCAGCAAGTCATCAGATAGTTACAGATGGAATCCAGCTGGGGAAATTTGCACTCCATACCAACCAAGTGGG
ATGGGTCAGCCCATTTGTGACGATGCCCGATGGACAGCAAGTATTGACAGTACCAGCAACAGCATTG
CTGAAGAACTGTATCAGTGAAGAGCCACCAGCTAAGAGACAGTGTATGGAAATAATTGAGAGCCGGGT
GGAATGTGCAGAAATTGAAGAGAGAGAAGCGCTTCAGAAACAGCTGGATGAAGCCAAACCGAGAGGCCAG
AAATACCGACAGCAGCTGCTTAAGAAGGAGCAGGAGGCAGAGGCCTACAGGCAGAAGCTGGAGGCCATGA
CACGCATCCAGACCAACAAAGAAGCCGTT

ACGCGTACGCGGCCGCTCGAGCAGAAACTCATCTCAGAAGAGGATCTGGCAGCAAATGATATCCTGGATT
ACAAGGATGACGACGATAAGGTTTAA



Protein Sequence: >MR229628 representing NM_001271468
 Red=Cloning site Green=Tags(s)

MSLVDLGKLLAARAGQDDEVRI LMANGAPFTD WLGT SPLHLAAQYGHFSTTEVLLRAGVSRDARTKV
 DRTP LHM AASEGHANIVEVLLKHGADVNAKMLKMTALHWATEH NHQEVVELLIKYGADVHTQSKFCKTA
 FDISIDNGNEDLAEILQIAMQNQINTNPESPDTVTIHAATPQFIIGPGGVNLTDETVGS AVQFGNSSTS
 VLATLAALAEASAPLSNSSETPVVATEEVVTAESVDGAIQQVVSSGGQQVITIVTDGIQLGNLHSIPTSG
 MGQPIIVTMPDGGQVLTVPATDIAEETVISEEPPAKRQCEIIESRVECAEIEEREALQKQLDEANREAQ
 KYRQQLLKEQEAEAYRQKLEAMTRIQTNKEAV

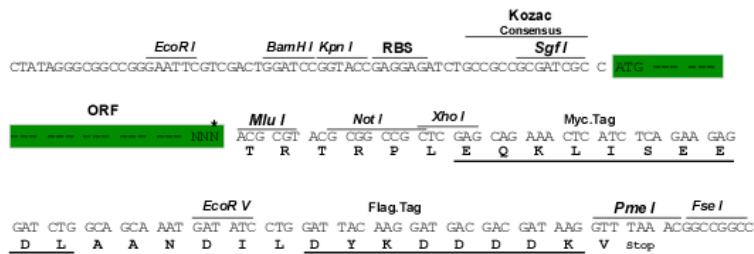
TRTRPLEQKLISEEDLAANDILDYKDDDDKV

Restriction Sites:

Sgfl-MluI

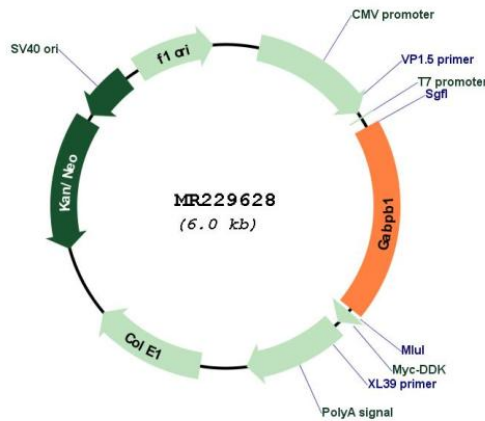
Cloning Scheme:

Cloning sites used for ORF Shuttling:



* The last codon before the Stop codon of the ORF

Plasmid Map:



ACCN:

NM_001271468

| | |
|-------------------------------|---|
| ORF Size: | 1149 bp |
| OTI Disclaimer: | The molecular sequence of this clone aligns with the gene accession number as a point of reference only. However, individual transcript sequences of the same gene can differ through naturally occurring variations (e.g. polymorphisms), each with its own valid existence. This clone is substantially in agreement with the reference, but a complete review of all prevailing variants is recommended prior to use. More info |
| OTI Annotation: | This clone was engineered to express the complete ORF with an expression tag. Expression varies depending on the nature of the gene. |
| Components: | The ORF clone is ion-exchange column purified and shipped in a 2D barcoded Matrix tube containing 10ug of transfection-ready, dried plasmid DNA (reconstitute with 100 ul of water). |
| Reconstitution Method: | <ol style="list-style-type: none">1. Centrifuge at 5,000xg for 5min.2. Carefully open the tube and add 100ul of sterile water to dissolve the DNA.3. Close the tube and incubate for 10 minutes at room temperature.4. Briefly vortex the tube and then do a quick spin (less than 5000xg) to concentrate the liquid at the bottom.5. Store the suspended plasmid at -20°C. The DNA is stable for at least one year from date of shipping when stored at -20°C. |
| RefSeq: | NM_001271468.1 , NP_001258397.1 |
| RefSeq Size: | 2712 bp |
| RefSeq ORF: | 1152 bp |
| Locus ID: | 14391 |
| UniProt ID: | Q00420 |
| Cytogenetics: | 2 61.76 cM |
| MW: | 41.8 kDa |
| Gene Summary: | Transcription factor capable of interacting with purine rich repeats (GA repeats). [UniProtKB/Swiss-Prot Function] |