

## Product datasheet for MR229463

### Gja5 (NM\_001271628) Mouse Tagged ORF Clone

#### Product data:

Product Type:	Expression Plasmids
Product Name:	Gja5 (NM_001271628) Mouse Tagged ORF Clone
Tag:	Myc-DDK
Symbol:	Gja5
Synonyms:	5730555N10Rik; Cnx40; Cx40; Gja-5
Mammalian Cell Selection:	Neomycin
Vector:	pCMV6-Entry (PS100001)
E. coli Selection:	Kanamycin (25 ug/mL)
ORF Nucleotide Sequence:	>MR229463 representing NM_001271628 Red=Cloning site Blue=ORF Green=Tags(s)

TTTTGTAATACGACTCACTATAGGGCGGCCGGAATTCGTCGACTGGATCCGGTACCGAGGAGATCTGCC  
GCC**CGATCGCC**

ATGGGTGACTGGAGCTTCTGGGGAGTTCCTGGAGGAGGTCCACAAGCACTCCACAGTCATCGGCAAGG  
TCTGGCTCACTGTCTGTTCAATTTCCGCATGCTGGTCTGGGCACCGCTGCTGAGTCTCTGGGGAGA  
TGAGCAGGCCGACTTCCGGTGCATACCATTCAGCCTGGTTGCCAAAATGTCTGCTATGACCAAGCCTTC  
CCCATCTCCACATTCGTTATTGGTACTGCAGATCATCTTTGTGTCCACGCCTTCTCTAGTGTACATGG  
GCCATGCCATGCACACTGTGCGCATGCAGGAAAAGCAGAAATTGCGGGATGCTGAGAAAGCTAAAGAGGC  
CCACCGCACTGGTGCCTATGAGTACCCAGTAGCCGAAAAGGCCGAGCTGTCTGCTGGAAAAGAGTATAGT  
GGGAAGATTGTCCTCCAGGGCACCTACTCAACACCTATGCTGCACCATTCGTATCCGACCCACCATGG  
AGGTGGCCTTCATCGTAGGCCAGTACCTCCTCTATGGGATCTTCTCGGATACCCCTGCATGTCTGCCGAG  
GAGTCCCTGTCCCACCCAGTCAACTGTTATGTTTCGAGGCCACGGAGAAGAATGTCTTTCATTGTCTTT  
ATGATGGCTGTGGCTGGACTGTCTCTGTTTCTCAGCCTGGCTGAAGTCTACCACCTGGGCTGGAAGAAGA  
TCCGACAGCGCTTTGGCAAGTACGGCAGGGTGTGGACAAGCACCAGCTGCCTGGCCCTCCCACCCAGCCT  
CGTCCAGAGCCTCACTCCTCCCCTGACTTCAATCAGTGCCTAAAGAACAGCTCCGGAGAGAAATTCCTC  
AGCGACTTCAGTAATAACATGGGCTCCCGGAAGAATCCAGACGCTCTGGCCACTGGGGAAGTCCAAACC  
AGGAGCAGATTCCAGGGGAAGGCTTCATCCACATGCACTATAGCCAGAAGCCAGAGTACGCCAGTGGAGC  
CTCTGCGGGCCACCGCCTTCTCAGGGCTACCATAGTGACAAACGGCGCCTTAGTAAGGCCAGCAGCAAA  
GCAAGGTCAGATGACCTGTCAAGT

**ACGCGT**ACGCGGCCGCTCGAGCAGAAAACATCTCAGAAGAGGATCTGGCAGCAATGATATCCTGGATT  
ACAAGGATGACGACGATAAGGTTAA



[View online »](#)

**Protein Sequence:** >MR229463 representing NM\_001271628  
 Red=Cloning site Green=Tags(s)

MGDWSFLGEFLEEVEHKHSTVIGKVWLTVLFIFRMLVLGTA AESSWGDEQADFRCDTIQPGCQNVCYDQAF  
 PISHIRYWVLQIIFVSTPSLVYMGHAMHTVRMQEKQKLRDAEKAKEAHRGTGAYEYPAEKAELSCWKEVD  
 GKIVLQGTLLNTYVCTILIRTTMEVAFIVGOYLLYGIFLDTLHVCRRSPCPHPVNCYVSRPTEKNVIVF  
 MMAVAGLSLFLSLAELYHLGWKKIRQRFGKSRQGVDKHQLPGPPTSLVQSLTPPPDFNQCLKNSSGEKFF  
 SDFSNNMGSRKNPDALATGEVNPQEIQIPGEGFIHMHYSQKPEYASGASAGHRLPQGYHSDKRRLSKASSK  
 ARSDDLVS

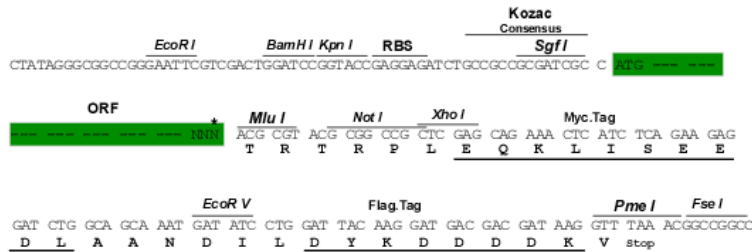
TRTRPLEQKLISEEDLAANDILDYKDDDDKV

**Restriction Sites:**

Sgfl-MluI

**Cloning Scheme:**

Cloning sites used for ORF Shuttling:



\* The last codon before the Stop codon of the ORF

**ACCN:** NM\_001271628

**ORF Size:** 1074 bp

**OTI Disclaimer:** The molecular sequence of this clone aligns with the gene accession number as a point of reference only. However, individual transcript sequences of the same gene can differ through naturally occurring variations (e.g. polymorphisms), each with its own valid existence. This clone is substantially in agreement with the reference, but a complete review of all prevailing variants is recommended prior to use. [More info](#)

**OTI Annotation:** This clone was engineered to express the complete ORF with an expression tag. Expression varies depending on the nature of the gene.

**Components:** The ORF clone is ion-exchange column purified and shipped in a 2D barcoded Matrix tube containing 10ug of transfection-ready, dried plasmid DNA (reconstitute with 100 ul of water).

**Reconstitution Method:**

1. Centrifuge at 5,000xg for 5min.
2. Carefully open the tube and add 100ul of sterile water to dissolve the DNA.
3. Close the tube and incubate for 10 minutes at room temperature.
4. Briefly vortex the tube and then do a quick spin (less than 5000xg) to concentrate the liquid at the bottom.
5. Store the suspended plasmid at -20°C. The DNA is stable for at least one year from date of shipping when stored at -20°C.

**RefSeq:** [NM\\_001271628.1](#), [NP\\_001258557.1](#)

**RefSeq Size:** 3180 bp

**RefSeq ORF:** 1077 bp

**Locus ID:** 14613

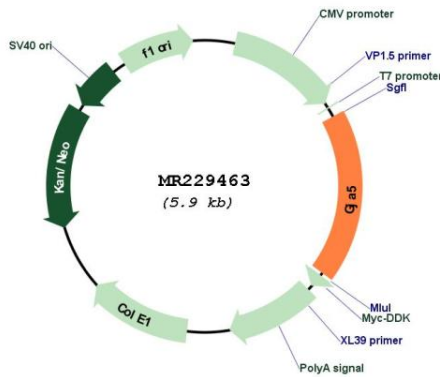
**UniProt ID:** [Q01231](#)

**Cytogenetics:** 3 42.04 cM

**MW:** 40.4 kDa

**Gene Summary:** One gap junction consists of a cluster of closely packed pairs of transmembrane channels, the connexons, through which materials of low MW diffuse from one cell to a neighboring cell.[UniProtKB/Swiss-Prot Function]

**Product images:**



Circular map for MR229463