

Product datasheet for MR229414

Capg (NM_001271415) Mouse Tagged ORF Clone

Product data:

Product Type:	Expression Plasmids
Product Name:	Capg (NM_001271415) Mouse Tagged ORF Clone
Tag:	Myc-DDK
Symbol:	Capg
Synonyms:	gCap39; mbh1
Mammalian Cell Selection:	Neomycin
Vector:	pCMV6-Entry (PS100001)
E. coli Selection:	Kanamycin (25 ug/mL)
ORF Nucleotide Sequence:	>MR229414 ORF sequence Red=Cloning site Blue=ORF Green=Tags(s)

TTTTGTAATACGACTCACTATAGGGCGGCCGGAATTCGTCGACTGGATCCGGTACCGAGGAGATCTGCC
GCC**CGGATCGCC**

ATGTACACACCCATCCCTCAGAGTGGCTCTCCATCCCGGCTCAGTCCAAGACCCAGGCCACACATAT
GGCGTGTGGAGAAGCTGAAGCCGGTGCCATAGCACGAGAGGCCATGGCATCTTTTCTCTGGGGACTC
CTACCTAGTGCTTACAATGGCCAGAGGAGGCTCCCATCTGCACCTGTGGATAGGCCAGCAGTCTCC
CGGGATGAGCAGGGGGCCTGTGCAGTGTGGCTGTGCATCTCAACACCCTGCTGGGGAGCGGCCAGTGC
AGCACCGTGAGGTTCAAGGCAATGAGTCTGACCTTTCATGAGCTACTTCCACGAGGCCCAAGTACCG
GGAAGGTGGTGTAGAGTCGGCATTTCACAAGACAACCTCGGGCGCCACCCAGCAGCCATCAGGAAGCTC
TACCAGGTTAAGGGGAAGAAGAATCCGTGCGACCGAGAGGGCTCTGAGTTGGGACAGCTTCAACACTG
GGGACTGCTTCATCCTGGACCTGGGTGAGAATCTTTGCCTGGTGTGGTGGAAAGTCCAACATCCTTGA
GCGCAACAAGGCGAGGGACCTGGCCCTGGCCATCAGGGACAGCGAGCGGCAGGGCAAGGCCAGGTGGAA
ATCATCACTGATGGAGAGGAGCCAGCCGAGATGATTCAAGTCTGGGCCCAAGCCTGCTCTGAAGGAGG
GTAACCCCGAGGAAGACATTACAGCTGACCAGACCAACGCCAGGCTGCAGCCCTGTATAAGGTCTCTGA
TGCCACTGGACAGATGAATCTGACCAAGGTGGCTGACTCCAGCCCTTTTGCCTCTGAAGTCTAATTCCA
GATGACTGCTTTGTTCTGGACAACGGGCTGTGTGGCAAAATCTACATCTGGAAGGGGAGAAAAGCTAATG
AGAAAGAGCGGCAGGCAGCCCTCCAAGTGGCTGATGGCTTCATCTCGAATGAGGTATTCCCAACAC
TCAGGTGGAGATACTGCCCCAGGGCCGAGAGAGTCCCATCTTCAAGCAATTCTTCAAGAAGTGGAAAG

ACGCGTACGCGGCCGCTCGAGCAGAAACTCATCTCAGAAGAGGATCTGGCAGCAATGATATCCTGGATT
ACAAGGATGACGACGATAAGGTTTAA



[View online »](#)

Protein Sequence: >MR229414 protein sequence
Red=Cloning site Green=Tags(s)

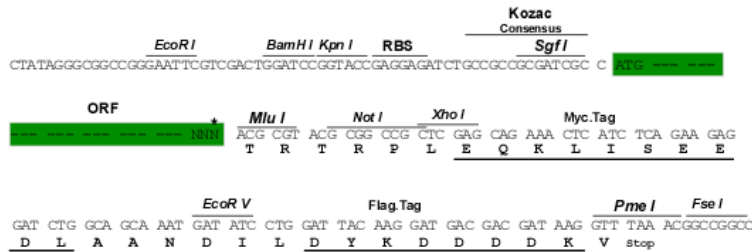
MYTPIPQSGSPFPASVQDPGLHIWRVEKLPVPIARESHGIFFSGDSYLVLHNGPEEASHLHLWIGQSS
 RDEQGACAVLAVHLNLLGERPVQHREVDQNESDLFMSYFPRGLKYREGGVESAFHKTTSGATPAAIRKL
 YQVKGKKNIRATERALSWDSFNTGDCFILDLGQNIFAWCGGKSNILERNKARDLALAIRDSERQGAQVE
 IITDGEEPAEMIQVLGPKPALKEGNPEEDITADQTNAQAAALYKVS DATGQMNLTKVADSSPFASELLIP
 DDCFVLNGLCGKIYIWKGRKANEKERQAALQVADGFI SRMRYSPNTQVEILPQGRESPIFKQFFKNWK

TRTRPLEQKLISEEDLAANDILDYKDDDDKV

Restriction Sites: SgfI-MluI

Cloning Scheme:

Cloning sites used for ORF Shuttling:



* The last codon before the Stop codon of the ORF

ACCN: NM_001271415

ORF Size: 1047 bp

OTI Disclaimer: The molecular sequence of this clone aligns with the gene accession number as a point of reference only. However, individual transcript sequences of the same gene can differ through naturally occurring variations (e.g. polymorphisms), each with its own valid existence. This clone is substantially in agreement with the reference, but a complete review of all prevailing variants is recommended prior to use. [More info](#)

OTI Annotation: This clone was engineered to express the complete ORF with an expression tag. Expression varies depending on the nature of the gene.

Components: The ORF clone is ion-exchange column purified and shipped in a 2D barcoded Matrix tube containing 10ug of transfection-ready, dried plasmid DNA (reconstitute with 100 ul of water).

- Reconstitution Method:**
1. Centrifuge at 5,000xg for 5min.
 2. Carefully open the tube and add 100ul of sterile water to dissolve the DNA.
 3. Close the tube and incubate for 10 minutes at room temperature.
 4. Briefly vortex the tube and then do a quick spin (less than 5000xg) to concentrate the liquid at the bottom.
 5. Store the suspended plasmid at -20°C. The DNA is stable for at least one year from date of shipping when stored at -20°C.

RefSeq: [NM_001271415.1](#), [NP_001258344.1](#)

RefSeq Size: 1390 bp

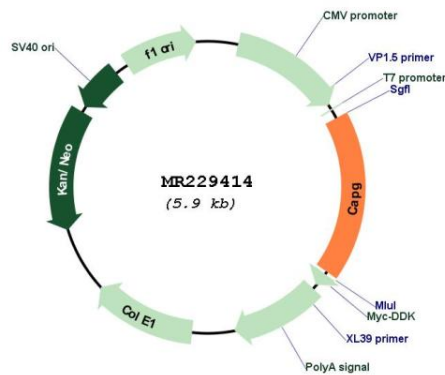
RefSeq ORF: 1050 bp

Locus ID: 12332

Cytogenetics: 6 C1

MW: 38.8 kDa

Product images:



Circular map for MR229414