

## Product datasheet for MR229410

### Pdlim2 (NM\_001253736) Mouse Tagged ORF Clone

#### Product data:

**Product Type:** Expression Plasmids  
**Product Name:** Pdlim2 (NM\_001253736) Mouse Tagged ORF Clone  
**Tag:** Myc-DDK  
**Symbol:** Pdlim2  
**Synonyms:** 4732462F18Rik; Slim  
**Mammalian Cell Selection:** Neomycin  
**Vector:** pCMV6-Entry (PS100001)  
**E. coli Selection:** Kanamycin (25 ug/mL)  
**ORF Nucleotide Sequence:** >MR229410 ORF sequence  
Red=Cloning site Blue=ORF Green=Tags(s)

TTTTGTAATACGACTCACTATAGGGCGGCCGGAATTCGTCGACTGGATCCGGTACCGAGGAGATCTGCC  
GCC**CGATCGCC**

ATGGCGTTGACTGTGGATGTGGCAGGACCAGCACCTTGGGGCTTCCGAATTAGCGGGGGCAGAGATTTCC  
ACACACCCATCATTGTGACCAAGGTCACAGAGCGGGGCAAGGCTGAAGCAGCTGATCTCCGGCCTGGCGA  
CATCATTGTGGCCATCAATGGACAGAGTGCAGAGAACATGCTACACGCGGAGGCCAAAGCAAGATCCGA  
CAGAGCGCCTCACCCCTAAGACTGCAGCTGGACCGGTCCCAAACAGCCTCTCTGGGCAGACCAATGGGG  
AGGGCTCCTTGAAGTGTGGCAACCAGATTCCAGGGCTCCCTGAGGACACACCGTGACAGCCAGTCTTC  
CCAGAGGTCTGCCTGCTTCCAGCCAGTCTCTCAGCCCCAGGCCTTGACGCCCTTCTCCACCCACCC  
CCTACCAGCCCAGTTGCCCTTTCTAAAGAGGATATGATTGGCTGTAGTTCCAGAGTCTGACACACTCTC  
CAGGCCTTGCTGCTGCTCACCATTGACCTACCCTGGCCACCCACCAGCCAACAGGCCGGCCACAGCAG  
CCCAAGCGACTCCGAGTGAGGGTGTGCTCCATTCCCAGGACGGCCCTCCAGCCCTAGGTTCCAGCAGT  
TTGGATCTGGAGGAAGACTCAGAGGTGTTCAAGATGCTGCAGGAGAACCGCCAGGGACGGGCCGCCCAA  
GGCAGTCCAGCTCTTTTCGACTCTTACAGGAAGCCTTGGAGGCTGAGGAGAGAGGTGGCACACCTGCCTT  
TGTGCCAGCTCGCTGAGCTCCCAGGCTTCCTTGCCACCTCCAGGGCCTTGCCACTCCACCCAAGCTC  
CACACCTGTGAGAAATGCAGCGTCAACATCTCGAACAGGCGGTCCGCATCCAGGAGGGGAGGTACCGAC  
ACCCTGGCTGCTACACTTGCGCAGACTGTGGGCTGAACCTGAAGATGCGCGGCCACTTCTGGGTGGGCAA  
TGAGTTGTACTGCGAGAAGCATGCCCGCCAGCGCTACTCTATGCCTGGAAGTCTCAACTCTCGAGCC

**ACGCGT**ACGCGGCCGCTCGAGCAGAAACTCATCTCAGAAGAGGATCTGGCAGCAAATGATATCCTGGATT  
ACAAGGATGACGACGATAAGGTTTAA



[View online »](#)

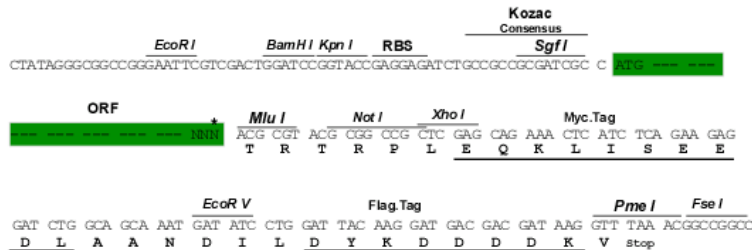
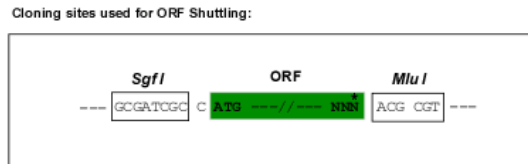
**Protein Sequence:** >MR229410 protein sequence  
Red=Cloning site Green=Tags(s)

MALTVDVAGPAPWGFRISSGRDFHTPIIVTKVTERGKAEAADLRPGDIIVAINGQSAENMLHAEQSKIR  
 QSASPLRLQLDRSQTASPGQTNAGEGSLEVLATRFQGLRTHRDSQSSQRSACFSPVLSRPRCSPFSTPP  
 PTSPVALSKEDMIGCSFQSLTHSPGLAAAHHLTPYGHPTSQQAGHSPPSDSAVRVLLHSPGRPSSPRFSS  
 LDLEEDSEVFKMLQENRQGRAAPRQSSSFRLQEALEAEERGCTPAFVPSLSSQASLPTSRALATPPKL  
 HTCEKCSVNI SNQAVRIQEGRYRHPGCYTCADCGLNLKMRGHFWVGNELYCEKHARQRYSMPTGLNSRA

TRTRPLEQKLISEEDLAANDILDYKDDDDKV

**Restriction Sites:** SgfI-MluI

**Cloning Scheme:**



\* The last codon before the Stop codon of the ORF

**ACCN:** NM\_001253736

**ORF Size:** 1050 bp

**OTI Disclaimer:** The molecular sequence of this clone aligns with the gene accession number as a point of reference only. However, individual transcript sequences of the same gene can differ through naturally occurring variations (e.g. polymorphisms), each with its own valid existence. This clone is substantially in agreement with the reference, but a complete review of all prevailing variants is recommended prior to use. [More info](#)

**OTI Annotation:** This clone was engineered to express the complete ORF with an expression tag. Expression varies depending on the nature of the gene.

**Components:** The ORF clone is ion-exchange column purified and shipped in a 2D barcoded Matrix tube containing 10ug of transfection-ready, dried plasmid DNA (reconstitute with 100 ul of water).

**Reconstitution Method:**

1. Centrifuge at 5,000xg for 5min.
2. Carefully open the tube and add 100ul of sterile water to dissolve the DNA.
3. Close the tube and incubate for 10 minutes at room temperature.
4. Briefly vortex the tube and then do a quick spin (less than 5000xg) to concentrate the liquid at the bottom.
5. Store the suspended plasmid at -20°C. The DNA is stable for at least one year from date of shipping when stored at -20°C.

**RefSeq:** [NM\\_001253736.1](#), [NP\\_001240665.1](#)

**RefSeq Size:** 1587 bp

**RefSeq ORF:** 1050 bp

**Locus ID:** 213019

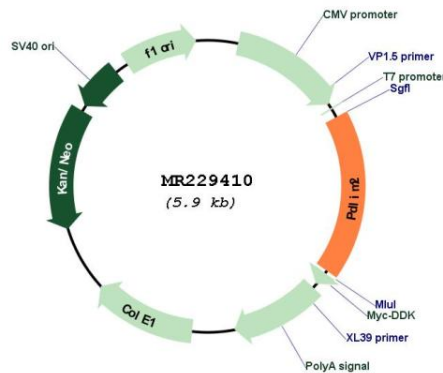
**UniProt ID:** [Q8R1G6](#)

**Cytogenetics:** 14 D2

**MW:** 37.7 kDa

**Gene Summary:** Probable adapter protein located at the actin cytoskeleton that promotes cell attachment. Necessary for the migratory capacity of epithelial cells. Overexpression enhances cell adhesion to collagen and fibronectin and suppresses anchorage independent growth. May contribute to tumor cell migratory capacity (By similarity).[UniProtKB/Swiss-Prot Function]

**Product images:**



Circular map for MR229410