

## Product datasheet for MR229332

### P2ry14 (NM\_001287123) Mouse Tagged ORF Clone

#### Product data:

Product Type:	Expression Plasmids
Product Name:	P2ry14 (NM_001287123) Mouse Tagged ORF Clone
Tag:	Myc-DDK
Symbol:	P2ry14
Synonyms:	A330108O13Rik; Gpr105; P2Y14
Mammalian Cell Selection:	Neomycin
Vector:	pCMV6-Entry (PS100001)
E. coli Selection:	Kanamycin (25 ug/mL)
ORF Nucleotide Sequence:	>MR229332 ORF sequence Red=Cloning site Blue=ORF Green=Tags(s)

TTTTGTAATACGACTCACTATAGGGCGGCCGGAATTCGTCGACTGGATCCGGTACCGAGGAGATCTGCC  
GCC**CGATCGCC**

ATGAACAACCTCCACCACCACAGACCCTCCAAACCAGCCCTGCTCCTGGAACACCCTGATCACAAGCAGAT  
TCATTCCTGTTGTACGGTATGGTCTTCATCACGGGGCTCCTCCTCAATGGGATATCAGGATGGATATT  
CTTTTATGTGCCAGCTCCAAGAGTTTTATCATCTATCTCAAGAACATAGTGGTGGCTGACTTTCTCATG  
GGCCTGACTTTCCCTTTCAAAGTCCTTGGTGACTCAGGCCTCGGCCCTGGCAGGTGAATGTGTTGTGT  
GCAGGGTCTCTGCCGTCATCTTCTATGTTAATATGTACGTCAGCATCGTGTCTTTGGGCTCATCAGCTT  
TGACAGGTAATAAAAATTGTGAAGCCCTTCTGACGCTATTGTGACGTCGGTGAATATAGCAAGCTG  
CTTTCTGTGCTCGTGTGGATGCTCATGCTTCTCCTTGCTGTCCAAACATCATCCTGACAAACCAGGGTG  
TCAAGGAGGTCACGAAGATACAGTGCATGGAGCTCAAAAACGAGCTGGGGCGGAAGTGGCACAAGGCGTC  
TAACTATATCTTCGTGAGTATCTTCTGGGTCGTGTTTCTTCTGCTAATCGTCTTCTACACGGCCATCAGC  
AGGAAGATCTTCAAGTCTCACCTCAAGTCCAGGAAGAATTCCACCTCCGTCAGAGGAAGTCCAGCCGCA  
ATATCTTCAGCATCGTCTGCTGTTTTGTGCTGCTTTGTGCCTTACCACATTGCCAGAATCCCCTACAC  
AAAGAGTCAGACGAAGGTCACCTACAGCTGCCGGACGAAGGAGACCCTGCTCTATGCCAAGAATTCACT  
CTGCTACTCTGGCTGCCAATGTGTGCTGGACCCATTATTTATTTCTTCTTATGCCAGCCATTTAGAG  
AAGTCTTAAATAAGAAGTTACACATGTCACTCAAAGTCCAGAATGACCTAGAGGTTTCCAAAACAAAAG  
GGAAAATGCGATTTCATGAAAGCACAGATACTTTG

**ACGCGT**ACGCGGCCGCTCGAGCAGAAACTCATCTCAGAAGAGGATCTGGCAGCAAATGATATCCTGGATT  
ACAAGGATGACGACGATAAGGTTTAA



[View online »](#)

**Protein Sequence:** >MR229332 protein sequence  
Red=Cloning site Green=Tags(s)

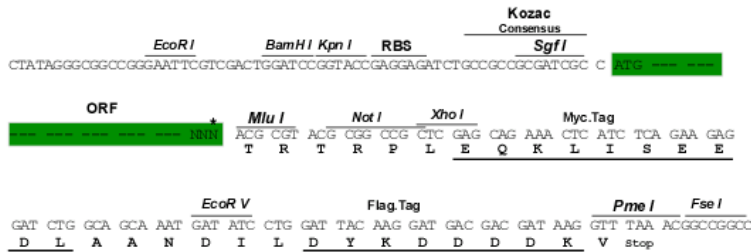
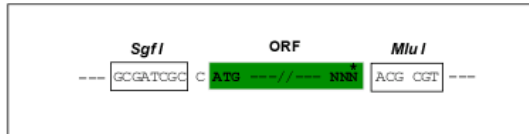
MNNSTTTDPPNQPCSWNTLITKQIIPVLYGMVFITGLLLNGISGWIFFYVPSKSFIIYLKNIIVADFLM  
 GLTFPFKVLGDSGLGPWQVNVFVCRVSAVIFYVNMVVSIVFFGLISFDRIYKIVKPLLTISIVQSVNYSKL  
 LSVLVWMLMLLLAVPNIIILTNQGVKEVTKIQCMELKNELGRKWHKASNYIFVSIWVWVFLLLIVFYTAIT  
 RKIFKSHLKS RNKSTSVKRKSSRNIFSVILVFVVCVFPYHIARIPYTKSQTEGHYSCRTKETLLYAKEFT  
 LLLSAANVCLDPIIYFFLCQPFREVLNKKLHMSLKVQNDLEVS KTKRENAIHESDTL

TRTRPLEQKLISEEDLAANDILDYKDDDDKV

**Restriction Sites:** SgfI-MluI

**Cloning Scheme:**

Cloning sites used for ORF Shuttling:



\* The last codon before the Stop codon of the ORF

**ACCN:** NM\_001287123

**ORF Size:** 1017 bp

**OTI Disclaimer:** The molecular sequence of this clone aligns with the gene accession number as a point of reference only. However, individual transcript sequences of the same gene can differ through naturally occurring variations (e.g. polymorphisms), each with its own valid existence. This clone is substantially in agreement with the reference, but a complete review of all prevailing variants is recommended prior to use. [More info](#)

**OTI Annotation:** This clone was engineered to express the complete ORF with an expression tag. Expression varies depending on the nature of the gene.

**Components:** The ORF clone is ion-exchange column purified and shipped in a 2D barcoded Matrix tube containing 10ug of transfection-ready, dried plasmid DNA (reconstitute with 100 ul of water).

**Reconstitution Method:**

1. Centrifuge at 5,000xg for 5min.
2. Carefully open the tube and add 100ul of sterile water to dissolve the DNA.
3. Close the tube and incubate for 10 minutes at room temperature.
4. Briefly vortex the tube and then do a quick spin (less than 5000xg) to concentrate the liquid at the bottom.
5. Store the suspended plasmid at -20°C. The DNA is stable for at least one year from date of shipping when stored at -20°C.

**RefSeq:** [NM\\_001287123.1](#), [NP\\_001274052.1](#)

**RefSeq Size:** 1994 bp

**RefSeq ORF:** 1017 bp

**Locus ID:** 140795

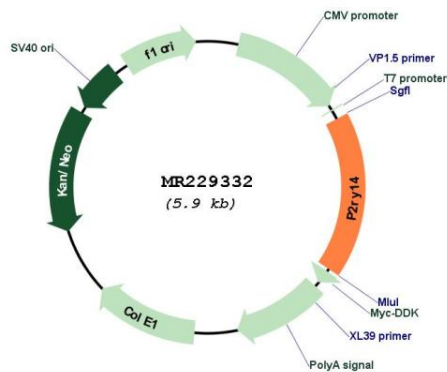
**UniProt ID:** [Q9ESG6](#)

**Cytogenetics:** 3 28.96 cM

**MW:** 38.9 kDa

**Gene Summary:** Receptor for UDP-glucose coupled to G-proteins.[UniProtKB/Swiss-Prot Function]

**Product images:**



Circular map for MR229332