

Product datasheet for **MR229315**

Gpr160 (NM_001286994) Mouse Tagged ORF Clone

Product data:

Product Type: Expression Plasmids
Product Name: Gpr160 (NM_001286994) Mouse Tagged ORF Clone
Tag: Myc-DDK
Symbol: Gpr160
Synonyms: 1700025D19Rik; GPCR150
Mammalian Cell Selection: Neomycin
Vector: pCMV6-Entry (PS100001)
E. coli Selection: Kanamycin (25 ug/mL)
ORF Nucleotide Sequence: >MR229315 ORF sequence
 Red=Cloning site Blue=ORF Green=Tags(s)

TTTTGTAATACGACTCACTATAGGGCGGCCGGAATTCGTCGACTGGATCCGGTACCGAGGAGATCTGCC
 GCC**CGATCGCC**

ATGACAGCTCTTTCTTCAAAGAACTGCTCTTTCAATACCAGCTCCATCAGTCTCCGAGCTCCTGGAGG
 CCTCCTGTCTGTTCTTGATCATCTGGGAAAGTGTATTAACATCCTCCTCTAAGAGTGAGAAG
 GGGAGACGCCCGCTGGACTTTGATGGAGTACTTCTGCTTCTCACTCGCACTTGTCGATCTCCTGCTGTTG
 GTAACATTTCCATCCTGACCTACTTCAGGGACTTTGTAGTTCTAGGTATTAGGTTTACCAGATACCACA
 TCTGTCTGCTCACACAAATTATTTCTTCACTTATGGCTTCTTGCACTACCCAGTCTGCTCACTGGCTTG
 TATAGACTACTGGTGAATCTGTCCAGAGCCAGCAAGCAGTCATCTAGGTGGCAGAAATTTATTTTC
 TTGACAGTCATTTAACTTGATCTCAGTCCTTGCTTACGTTTTGGTTGACCCGGCCATCTCAGTCAGCC
 TAAAGGCACACAGGGGCTATGTGTACCAGTGCCCCGCTATGTCAGCACTCAGAGTCACTGGCTCTCACT
 GTCTATGCTGATGGTTTTATTTGGCTTTTCTGATTTTCATGGCAGGAAGTTGTTGCCTTGCTTCAGGCT
 ATGAGGATAGCATCCTATAAGAGCAAGGCCGCTCTACTTTCTTTCCCACTCCACTGCGGTTACGCC
 TGAGCTGCAGAGAAGCACTTTGCCAGGCTCATCGTGTCTTTCTTGGACCTGGTTTCCCTTTGTAGC
 ACTTCAGGTCTCATCTCTCCCTCAGAGTTTTCAGATCCCGGCGTACATAGAAATGAACGTCCCCTGGCTG
 TACTTTGTCAACAGTTTCTCATCGTGCAGTTTATTGGTTTAACTGCCACAAGTTGATTTAAGAGACA
 GCTCGTTACCTGTGGATCCTTTCATCAACTGAAATGCTGCTTTGTTCCAGTCCATAGACTTAAGCAAGT
 GGAGAGGCCCATGTCCATAGTCATCTGT

ACGCGTACGCGGCCGCTCGAGCAGAACTCATCTCAGAAGAGGATCTGGCAGCAATGATATCCTGGATT
 ACAAGGATGACGACGATAAGGTTTAA



[View online »](#)

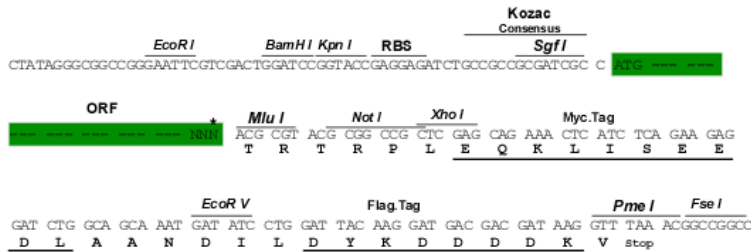
Protein Sequence: >MR229315 protein sequence
Red=Cloning site Green=Tags(s)

MTALSSKNCSLQYQLHQSPQLLEASCLLFLIILGKVLLNILLRVRGDARWTLMEYFCFSLALVDLLLL
 VNISILTYFRDFVVLGIRFTRYHICLLTQIISFTYGFLHYPVCSLACIDYWCNLSRASKQSSRWQKLLYF
 LTVILTWISVLAYVLVDPAISVSLKAHRGYVYQCPAYVSTQSHWLSLSMLMVLVFAFLISWQEVVALLQA
 MRIASYKSKAALYFPFLHCGYALSCEALLPRLIVCFLGTWFFPVALQVLILSLRVQIPAYIEMNVPWL
 YFVNSFLIAAVYWFNCHKLDLRDSPLVDPF INWKCCFVPVHRLKQVERPMSIVIC

TRTRPLEQKLISEEDLAANDILDYKDDDDKV

Restriction Sites: SgfI-MluI

Cloning Scheme:



* The last codon before the Stop codon of the ORF

ACCN: NM_001286994

ORF Size: 1008 bp

OTI Disclaimer: The molecular sequence of this clone aligns with the gene accession number as a point of reference only. However, individual transcript sequences of the same gene can differ through naturally occurring variations (e.g. polymorphisms), each with its own valid existence. This clone is substantially in agreement with the reference, but a complete review of all prevailing variants is recommended prior to use. [More info](#)

OTI Annotation: This clone was engineered to express the complete ORF with an expression tag. Expression varies depending on the nature of the gene.

Components: The ORF clone is ion-exchange column purified and shipped in a 2D barcoded Matrix tube containing 10ug of transfection-ready, dried plasmid DNA (reconstitute with 100 ul of water).

Reconstitution Method:

1. Centrifuge at 5,000xg for 5min.
2. Carefully open the tube and add 100ul of sterile water to dissolve the DNA.
3. Close the tube and incubate for 10 minutes at room temperature.
4. Briefly vortex the tube and then do a quick spin (less than 5000xg) to concentrate the liquid at the bottom.
5. Store the suspended plasmid at -20°C. The DNA is stable for at least one year from date of shipping when stored at -20°C.

RefSeq: [NM_001286994.1](#), [NP_001273923.1](#)

RefSeq Size: 2217 bp

RefSeq ORF: 1011 bp

Locus ID: 71862

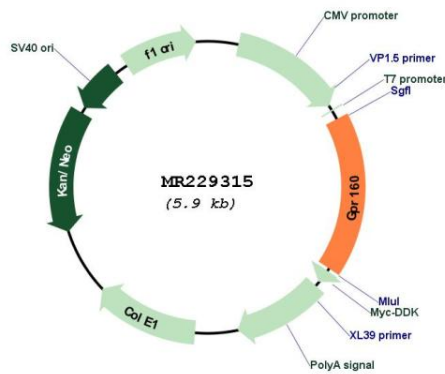
UniProt ID: [Q3U3F9](#)

Cytogenetics: 3 A3

MW: 38.9 kDa

Gene Summary: Orphan receptor.[UniProtKB/Swiss-Prot Function]

Product images:



Circular map for MR229315