

Product datasheet for MR229267

Sae1 (NM_001285892) Mouse Tagged ORF Clone

Product data:

Product Type:	Expression Plasmids
Product Name:	Sae1 (NM_001285892) Mouse Tagged ORF Clone
Tag:	Myc-DDK
Symbol:	Sae1
Synonyms:	2400010M20Rik; 2610044L12Rik; AL033372; AOS1; AW743391; D7Ertd177e; HSPC140; Sua1; Uble1a
Vector:	pCMV6-Entry (PS100001)
E. coli Selection:	Kanamycin (25 ug/mL)
Cell Selection:	Neomycin
ORF Nucleotide Sequence:	>MR229267 representing NM_001285892 Red=Cloning site Blue=ORF Green=Tags(s)

TTTTGTAATACGACTCACTATAGGGCGGCCGGGAATTCGTCGACTGGATCCGGTACCGAGGAGATCTGCC
GCC**CGATCGCC**

ATGGTAGAGAAGGAGGAGGCTGGCGGGCGGGCGGTGGCATCAGCGAGGAGGAGGCAGCGCAGTATG
ACCGACAGATCCGCCTGTGGGACTGGAGGCCAGAAGCGGCTTCGAGCTTCCCGGTGCTGATTGTTGG
CATGAAAGGACTTGGAGCTGAAATTGCCAAGAATCTTATCCTGGCAGGAGTCAAAGGGCTCACCATGCTG
GACCACGAACAGGTATCTCCAGAAGACCCTGGAGCTCAGTCTTGATTGACTGGGTCTGTGGCCGCA
ATAGGGCCGAGGCTCTTTGGAACGAGCCAGAATCTCAATCCCATGGTGGATGTAAGGTGGACTACTGA
GGATGTAGAGAAGAAGCCAGAGTCTTCTTACGAAGTTTGATGCGGTGTGCCTGACTTGCTGCTCCAGA
GATGTCATCATTAAAGTCGACCAGATCTGTACAGAAACAGCATTAAAGTCTTACAGGAGATGCTTTG
GGTACCATGGGTACACCTTTGCGAATCTTGAGAGCATGAATTTGTAGAAGAGAAAACAAAGTTGCCAA
AGTAAGCCAAGGAGTGGAAGATGGACCTGAGGCCAAGAGAGCAAAGCTTGATTATCAGAGACAACCATG
GTCAAAAAGAAAGTGCTTTTTGCCCCTGTAAAAGAGGCGCTAGAAGTGGACTGGAGTGGAGAGAAAGCCA
AGGCTGCCCTGAAGCGTACTGCCCCGACTACTTTCTGCTGCAAGTGTGCTGAAATCCGCACAGATAA
AGGGAGAGATCCGACTTCTGAGAGCTACAAGGAGGATGCGGAGCTGCTGCTGCAGATACGGAATGACGTG
TTTGACTCCCTGGGCATCAGTCTGACCTGCTTCCCGATGACTTTGTGAGTACTGCTTCTGAGATGG
CCCCAGTATGTGCTGTGGTTGGAGGGATCTTGGCACAGGAAATGTGAAGTTTGTCTGGCACCATGTG
TGTC

ACGCGTACGCGGCCGCTCGAGCAGAACTCATCTCAGAAGAGGATCTGGCAGCAAATGATATCCTGGATT
ACAAGGATGACGACGATAAGGTTTAA



[View online »](#)

Protein Sequence: >MR229267 representing NM_001285892
 Red=Cloning site Green=Tags(s)

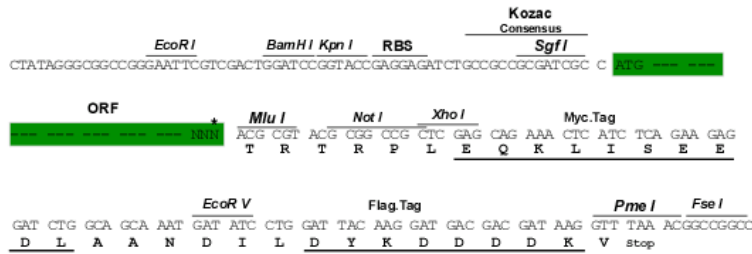
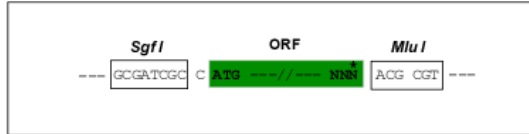
MVEKEEAGGGGGGISEEEAAQYDRQIRLWGLEAQKRLRASRVLIVGMKGLGAEIAKNLILAGVKGLTML
 DHEQVSPEDPGAQFLIQTGSVGRNRAEASLERQNLNPMVDVKVDTEDVEKKPESFFTKFQDAVCLTCCSR
 DVIIKVDQICHRNSIKFFITGDFVGYHGYTFANLGEHEFVEEKTKVAKVSQGVEDGPEAKRAKLDSSSETTM
 VKKKVLFPCVKEALEVDWSGEKAKAALKRTAPDYFLLQVLLKFRDVKGRDPTSESYKEDAELLQIRNDV
 FDSLGISPDLLPDDFVRYCFSEMAPVCAVVGILAQEIYKVCGLGTMCV

TRTRPLEQKLISEEDLAANDILDYKDDDDKV

Restriction Sites: SgfI-MluI

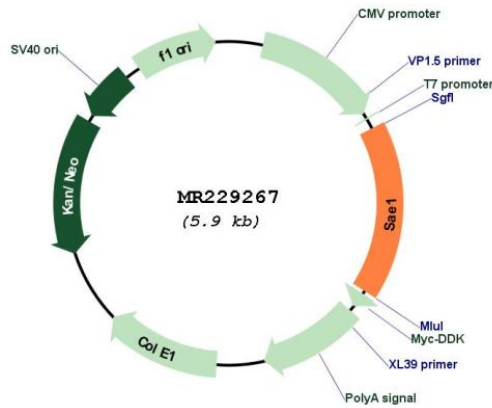
Cloning Scheme:

Cloning sites used for ORF Shuttling:



* The last codon before the Stop codon of the ORF

Plasmid Map:



ACCN: NM_001285892

ORF Size: 984 bp

OTI Disclaimer:	The molecular sequence of this clone aligns with the gene accession number as a point of reference only. However, individual transcript sequences of the same gene can differ through naturally occurring variations (e.g. polymorphisms), each with its own valid existence. This clone is substantially in agreement with the reference, but a complete review of all prevailing variants is recommended prior to use. More info
OTI Annotation:	This clone was engineered to express the complete ORF with an expression tag. Expression varies depending on the nature of the gene.
Components:	The ORF clone is ion-exchange column purified and shipped in a 2D barcoded Matrix tube containing 10ug of transfection-ready, dried plasmid DNA (reconstitute with 100 ul of water).
Reconstitution Method:	<ol style="list-style-type: none"> 1. Centrifuge at 5,000xg for 5min. 2. Carefully open the tube and add 100ul of sterile water to dissolve the DNA. 3. Close the tube and incubate for 10 minutes at room temperature. 4. Briefly vortex the tube and then do a quick spin (less than 5000xg) to concentrate the liquid at the bottom. 5. Store the suspended plasmid at -20°C. The DNA is stable for at least one year from date of shipping when stored at -20°C.
RefSeq:	NM_001285892.1 , NP_001272821.1
RefSeq Size:	1751 bp
RefSeq ORF:	987 bp
Locus ID:	56459
UniProt ID:	Q9R1T2
Cytogenetics:	7 8.88 cM
MW:	36.6 kDa
Gene Summary:	The heterodimer acts as an E1 ligase for SUMO1, SUMO2, SUMO3, and probably SUMO4. It mediates ATP-dependent activation of SUMO proteins followed by formation of a thioester bond between a SUMO protein and a conserved active site cysteine residue on UBA2/SAE2 (By similarity).[UniProtKB/Swiss-Prot Function]