

## Product datasheet for MR229257

### MIst8 (NM\_001252464) Mouse Tagged ORF Clone

#### Product data:

Product Type:	Expression Plasmids
Product Name:	MIst8 (NM_001252464) Mouse Tagged ORF Clone
Tag:	Myc-DDK
Symbol:	MIst8
Synonyms:	0610033N12Rik; AA409454; AI505104; AI851821; Gbl
Mammalian Cell Selection:	Neomycin
Vector:	pCMV6-Entry (PS100001)
E. coli Selection:	Kanamycin (25 ug/mL)
ORF Nucleotide Sequence:	>MR229257 ORF sequence Red=Cloning site Blue=ORF Green=Tags(s)

TTTGTGAATACGACTCACTATAGGGCGGCCGGAATTCGTCGACTGGATCCGGTACCGAGGAGATCTGCC  
 GCCGCGATCGCC

ATGAATACCAACCCAGGCACAGTGGGCAGTGACCCTGTCATCTTAGCAACTGCAGGCTATGACCACACGG  
 TGCCTTTTGGCAGGCTCACAGTGAATCTGCACTCGAACAGTGCAGCATCAGGACTCTCAGGTAATGC  
 ATTGGAGATTACTCCGACCGAAGCATGATTGCTGCTGCAGGTTACCAACATATCCGCATGTATGATCTC  
 AACTCCAATAACCCCAACCCATCATCAGTTATGACGGAGTCAGTAAGAACATTGCATCAGTGGGCTTTC  
 ACGAGGATGGTCGCTGGATGTATACAGGTGGCGAGGACTGCACAGCTCGCATCTGGGACCTCAGGTCCCG  
 GAACCTGCAGTGTGAGCATCTTCCAGGTGAACGCACCCATTAATTGCGTGTGTCTGCATCCCAACCG  
 GCAGAACTCATTGTGGGTGATCAGAGCGGTGCTATCCACATCTGGGACCTGAAGACAGACCACAATGAGC  
 AGCTGATTCGCGAGCCTGAGTCTTCCATCACGTCTGCTCACATCGACCCAGATGCTAGCTACATGGCAGC  
 CGTCAATAGTGCCGAAACTGCTATGTCTGGAACCTGACAGGGGGCATTGGTGACGATGTGACTCAGCTC  
 ATCCCTAAGACCAAGATCCCAGCCCATACACGCTATGCCCTGCAATGCCGCTTCAGCCCTGATTCACGC  
 TTCTTGCCACCTGTTGAGCTGACCAGACATGTAATCTGGAGGACATCAACTTCTCCCTGATGACAGA  
 GCTTAGCATCAAGAGTAGTAACCTGGAGAGTCATCCCGTGGCTGGATGTGGGGCTGTGCCTTCTCAGGG  
 GATTCCAGTACATTGTCACAGCTTCTTCTGACAACTAGCCCGCTCTGGTGTGTAGAGACTGGAGAAA  
 TCAAGAGAGATATGGTGCCATCAGAAAGCTGTCGTCTGCTTGGCCTCAATGACAGTGTGCTGGGT

ACGCGTACGCGGCCGCTCGAGCAGAACTCATCTCAGAAGAGGATCTGGCAGCAATGATATCCTGGATT  
 ACAAGGATGACGACGATAAGGTTTAA


[View online »](#)

**Protein Sequence:** >MR229257 protein sequence  
 Red=Cloning site Green=Tags(s)

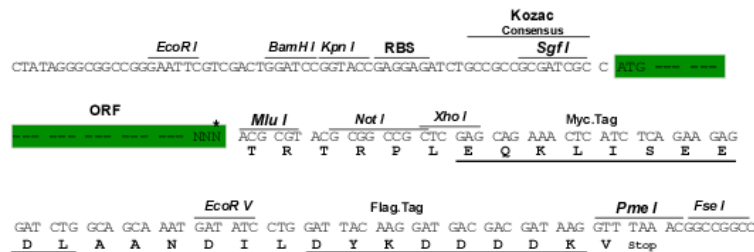
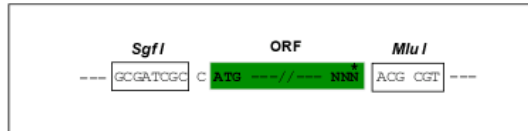
MNTTPGTVGSDPVILATAGYDHTVRFWQAHSIGICTRTVQHQSQVNALEITPDRSMIAAAGYQHIRMVYDL  
 NSNNPNPIISYDGVSKNIASVGFHEDGRWMTGGEDCTARIWDLRSRNLQCQRIFQVNPINCVCCLHPNQ  
 AELIVGDQSGAIHIWDLKTDHNEQLIPEPESSITSAHIDPDASYMAAVNSAGNCYVWNL TGGIGDDVTQL  
 IPKTKIPAHTRYALQCRFSPDSTLLATCSADQTCKIWRTSNFSMLTEL SIKSSNPGESSRGWMWGCAFSG  
 DSQYIVTASSDNLARLWCVETGEIKREYGGHQA VVCLAFNDSVLG

TRTRPLEQKLISEEDLAANDILDYKDDDDKV

**Restriction Sites:** SgfI-MluI

**Cloning Scheme:**

Cloning sites used for ORF Shuttling:



\* The last codon before the Stop codon of the ORF

**ACCN:** NM\_001252464

**ORF Size:** 978 bp

**OTI Disclaimer:** The molecular sequence of this clone aligns with the gene accession number as a point of reference only. However, individual transcript sequences of the same gene can differ through naturally occurring variations (e.g. polymorphisms), each with its own valid existence. This clone is substantially in agreement with the reference, but a complete review of all prevailing variants is recommended prior to use. [More info](#)

**OTI Annotation:** This clone was engineered to express the complete ORF with an expression tag. Expression varies depending on the nature of the gene.

**Components:** The ORF clone is ion-exchange column purified and shipped in a 2D barcoded Matrix tube containing 10ug of transfection-ready, dried plasmid DNA (reconstitute with 100 ul of water).

**Reconstitution Method:**

1. Centrifuge at 5,000xg for 5min.
2. Carefully open the tube and add 100ul of sterile water to dissolve the DNA.
3. Close the tube and incubate for 10 minutes at room temperature.
4. Briefly vortex the tube and then do a quick spin (less than 5000xg) to concentrate the liquid at the bottom.
5. Store the suspended plasmid at -20°C. The DNA is stable for at least one year from date of shipping when stored at -20°C.

**Note:** Plasmids are not sterile. For experiments where strict sterility is required, filtration with 0.22um filter is required.

**RefSeq:** [NM\\_001252464.1](#), [NP\\_001239393.1](#)

**RefSeq Size:** 3341 bp

**RefSeq ORF:** 981 bp

**Locus ID:** 56716

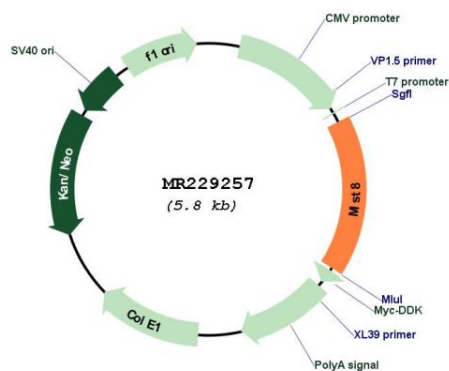
**UniProt ID:** [Q9DCJ1](#)

**Cytogenetics:** 17 A3.3

**MW:** 35.9 kDa

**Gene Summary:** Subunit of both mTORC1 and mTORC2, which regulates cell growth and survival in response to nutrient and hormonal signals. mTORC1 is activated in response to growth factors or amino acids. Growth factor-stimulated mTORC1 activation involves a AKT1-mediated phosphorylation of TSC1-TSC2, which leads to the activation of the RHEB GTPase that potentially activates the protein kinase activity of mTORC1. Amino acid-signaling to mTORC1 requires its relocalization to the lysosomes mediated by the Ragulator complex and the Rag GTPases. Activated mTORC1 up-regulates protein synthesis by phosphorylating key regulators of mRNA translation and ribosome synthesis. mTORC1 phosphorylates EIF4EBP1 and releases it from inhibiting the elongation initiation factor 4E (eIF4E). mTORC1 phosphorylates and activates S6K1 at 'Thr-389', which then promotes protein synthesis by phosphorylating PDCD4 and targeting it for degradation. Within mTORC1, LST8 interacts directly with MTOR and enhances its kinase activity. In nutrient-poor conditions, stabilizes the MTOR-RPTOR interaction and favors RPTOR-mediated inhibition of MTOR activity. mTORC2 is also activated by growth factors, but seems to be nutrient-insensitive. mTORC2 seems to function upstream of Rho GTPases to regulate the actin cytoskeleton, probably by activating one or more Rho-type guanine nucleotide exchange factors. mTORC2 promotes the serum-induced formation of stress-fibers or F-actin. mTORC2 plays a critical role in AKT1 'Ser-473' phosphorylation, which may facilitate the phosphorylation of the activation loop of AKT1 on 'Thr-308' by PDK1 which is a prerequisite for full activation. mTORC2 regulates the phosphorylation of SGK1 at 'Ser-422'. mTORC2 also modulates the phosphorylation of PRKCA on 'Ser-657'. [UniProtKB/Swiss-Prot Function]

## Product images:



Circular map for MR229257