

Product datasheet for **MR229234**

Grp2 (NM_001289442) Mouse Tagged ORF Clone

Product data:

Product Type:	Expression Plasmids
Product Name:	Grp2 (NM_001289442) Mouse Tagged ORF Clone
Tag:	Myc-DDK
Symbol:	Grp2
Synonyms:	Gads; GRAP-2; GRB2L; GRBLG; GrbX; Grf40; GRID; GrpL; Mona; P38
Mammalian Cell Selection:	Neomycin
Vector:	pCMV6-Entry (PS100001)
E. coli Selection:	Kanamycin (25 ug/mL)
ORF Nucleotide Sequence:	>MR229234 ORF sequence Red=Cloning site Blue=ORF Green=Tags(s)

TTTTGTAATACGACTCACTATAGGGCGGCCGGAATTCGTCGACTGGATCCGGTACCGAGGAGATCTGCC
GCC**CGATCGCC**

ATGGAAGCCACTGCCAAGTTTGATTTTCATGGCCTCAGGTGAGGACGAACTGAGCTTTCGACTGGAGACA
TTCTGAAGATACTAAGCAACCAGGAGGAGTGGCTCAAGGCGGAGCTCGGAAGCCAAGAAGGATATGTGCC
TAAGAATTTTATAGATATCGAGTTTCTGAGTGGTTCATGAAGGCTCTCTCGACATCAAGCAGAAAAC
TTACTCATGGGCAAGGACATTGGATTCTTCATCATCAGGGCCAGCCAGAGTTCAGGAGACTTCTCCA
TCTCTGTCAGGCACGAGGACGACGTTTCAGCACTCAAAGTCATGCGTGACACCAAGGGCAATTACTTCT
GTGGACCGAGAAGTTCCCATCTTAAATAAGCTGGTGGACTACTACCGGACAACGTCATCTCCAACAG
AAGCAGGTCTTCTTCGGGATGGAACCCAAGATCAGGGTCACCGGGCAACAGCCTGGACAGGAGGTCCC
AGGGCGGCCCTCACCCGAGTGAACCGTAGGAGAAGAAATCCGACCTTCAGTGAACCGGAAGCTGTGAGA
CCACCTTCTCTGGGTCCCCAGCAGTTCACCCGACCCAGCAGCCGTCACCCAGTTCACACCAGGGCCG
CAGCCCCCTCAACAGCAGCGTTATCTGCAGCATTTCCACCAGGACCGTGTGGGGCAGCCTGGACATAA
ACGATGGACACTGCGGCCTTGAAGTGAGGTGAACGCCACGCTGATGCACCGGAGACACCCGACCCCGT
ACAACCTCAGGCAGCAGGGCGGGTGCCTGGGCCAGGGCACTGTATGACTTTGAGGCTCTGGAAGAGGAC
GAGCTGGGATCCGAAGCGGAGAAGTGGTTGAAGTCCTGGACAGCTCAACCCATCTTGGTGACCGGCC
GTCTGCACAACAACTGGGTCTCTTCCCTGCCAACTATGTGGCCCCATGATGCGA

ACGCGTACGCGGCCGCTCGAGCAGAACTCATCTCAGAAGAGGATCTGGCAGCAATGATATCTGGATT
ACAAGGATGACGACGATAAGGTTTAA



[View online »](#)

Protein Sequence: >MR229234 protein sequence
Red=Cloning site Green=Tags(s)

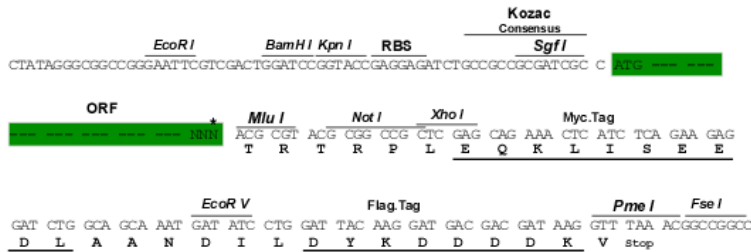
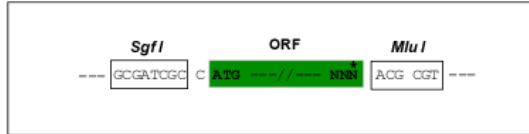
MEATAKFDPMASGEDEL SFRTGDILKILSNQEEWLK AELGSQEGYV PKNFIDIEFPEWFHEGLSRHQ AEN
 LLMGKDIGFFIIRASQSSPGDFSISVRHEDDVQHFKVMRDTKGN YFLWTEKFP SLNKLVDYYRTTSISKQ
 KQVFLRDGTQDQGH RGNLDRRSQGGPHPSGT VGE EIRPSVNRKLS D H L P L G P Q Q F H P H Q Q P S P Q F T P G P
 Q P P Q Q R Y L Q H F H Q D R R G G S L D I N D G H C G L G S E V N A T L M H R R H T D P V Q L Q A A G R V R W A R A L Y D F E A L E E D
 E L G F R S G E V V E V L D S S N P S W W T G R L H N K L G L F P A N Y V A P M M R

TRTRPLEQKLISEEDLAANDILDYKDDDDKV

Restriction Sites: SgfI-MluI

Cloning Scheme:

Cloning sites used for ORF Shuttling:



* The last codon before the Stop codon of the ORF

ACCN: NM_001289442

ORF Size: 966 bp

OTI Disclaimer: The molecular sequence of this clone aligns with the gene accession number as a point of reference only. However, individual transcript sequences of the same gene can differ through naturally occurring variations (e.g. polymorphisms), each with its own valid existence. This clone is substantially in agreement with the reference, but a complete review of all prevailing variants is recommended prior to use. [More info](#)

OTI Annotation: This clone was engineered to express the complete ORF with an expression tag. Expression varies depending on the nature of the gene.

Components: The ORF clone is ion-exchange column purified and shipped in a 2D barcoded Matrix tube containing 10ug of transfection-ready, dried plasmid DNA (reconstitute with 100 ul of water).

Reconstitution Method:

1. Centrifuge at 5,000xg for 5min.
2. Carefully open the tube and add 100ul of sterile water to dissolve the DNA.
3. Close the tube and incubate for 10 minutes at room temperature.
4. Briefly vortex the tube and then do a quick spin (less than 5000xg) to concentrate the liquid at the bottom.
5. Store the suspended plasmid at -20°C. The DNA is stable for at least one year from date of shipping when stored at -20°C.

Note: Plasmids are not sterile. For experiments where strict sterility is required, filtration with 0.22um filter is required.

RefSeq: [NM_001289442.1](#), [NP_001276371.1](#)

RefSeq Size: 5380 bp

RefSeq ORF: 969 bp

Locus ID: 17444

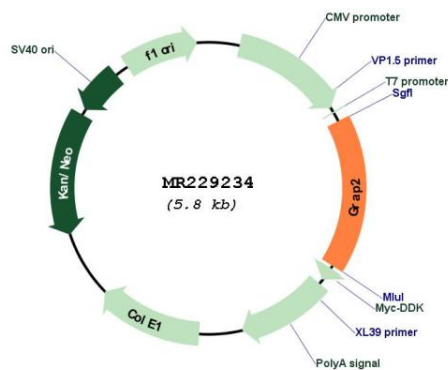
UniProt ID: [O89100](#)

Cytogenetics: 15 E1

MW: 36.8 kDa

Gene Summary: Interacts with SLP-76 to regulate NF-AT activation. Binds to tyrosine-phosphorylated shc. [UniProtKB/Swiss-Prot Function]

Product images:



Circular map for MR229234