

Product datasheet for **MR228936**

Rad51d (NM_001277942) Mouse Tagged ORF Clone

Product data:

Product Type: Expression Plasmids
Product Name: Rad51d (NM_001277942) Mouse Tagged ORF Clone
Tag: Myc-DDK
Symbol: Rad51d
Synonyms: R51H; R51H3; Rad5; Rad51I3; TRAD; Trad-d5
Vector: pCMV6-Entry (PS100001)
E. coli Selection: Kanamycin (25 ug/mL)
Cell Selection: Neomycin
ORF Nucleotide Sequence: >MR228936 representing NM_001277942
Red=Cloning site Blue=ORF Green=Tags(s)

TTTTGTAATACGACTCACTATAGGGCGGCCGGAATTCGTCGACTGGATCCGGTACCGAGGAGATCTGCC
GCC**GCGATCGCC**

ATGGGCATGCTCAGGGCAGGGCTGTGCCCGGGCTCACCGAGGAGACCGTCCAGCTTCTCAGAGGCCGAA
AGATAAAACAGTGGCAGACCTGGCAGCTGCTGACTTGGAGGAAGTAGCCAGAAGTGTGGCTTGCCTA
CAAGGCCCTCGTTGCCCTGAGGAGGGTGTGTGGCGCAGTTCTCGGCTTCCCCTTAAATGGCGCAGAT
CTCTATGAGGAACTGAAGACTTCCACGGCCATCCTGTCCACCGGCATCGGAAGCCTGGACAACTACTTG
ATGCTGGCCTCTATACTGGGAGGTGACTGAAATTGTGGGTGGCCAGGTAGCGGCAAAACCCAGGTGTG
TCTCTGTGTGGCTGCAAATGTGGCCATAGCCTGCAGCAGAATGTACTGTATGTGGATTCCAATGGAGGA
ATGACGGCGTCCCGCCTCCTCCAGCTACTACAGGCTAGAACCCAAGATGAGGAGAAAACAGGCAAGTGCTC
TCCAGAGGATACAGGTGGTGCCTTCATTTGACATCTTCCGGATGCTAGATATGCTACAGGACCTTCGCGG
CACCATAGCCCAGCAGGTGACCAACCACTTGACTCGAGATTGGGATGGTAGAAGATTCAAACCTGCCCTT
GGACGCTCCTGGAGCTTTGTGCCAGTACCCGGATTCTCCTGGATGTCACTGAGGGGGCTGGGACACTCG
GTAGCAGCCAACGCACAGTATGTCTGACCAAGTCTCCCGCCAGCCAACGGGTCTGCAGGAGATGATAGA
CATTGGGACATTGGGGACTGAGGAGCAGAGCCCAGAATTACCTGGCAAGCAGACG

ACGCGTACGCGGCCGCTCGAGCAGAACTCATCTCAGAAGAGGATCTGGCAGCAAATGATATCCTGGATT
ACAAGGATGACGACGATAAGGTTTAA



[View online »](#)

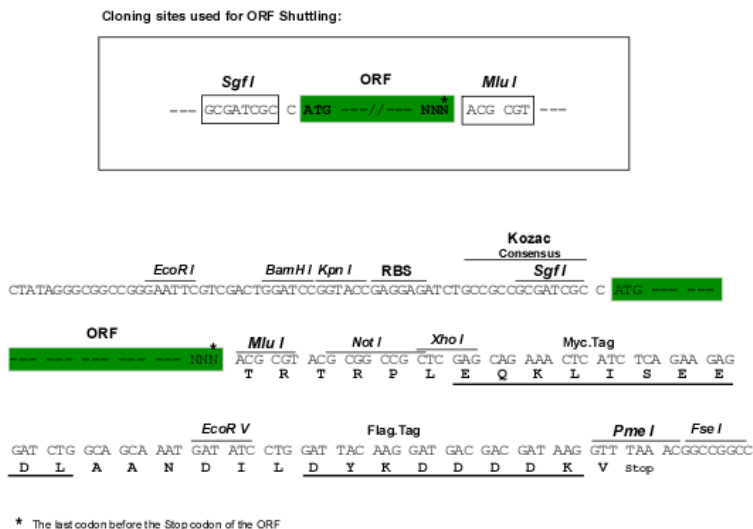
Protein Sequence: >MR228936 representing NM_001277942
 Red=Cloning site Green=Tags(s)

MGMLRAGLCPGLTEETVQLLRGRKIKTVADLAADLEEVAQKCGLSYKALVALRRVLLAQFSAFPLNGAD
 LYELKTSTAILSTGIGSLDKLLDAGLYTGEVTEIVGGPGSGKTQVCLCVAANVAHSLQQNVLYVDSNGG
 MTASRLQLLQARTQDEEKQASALQRIQVVRSFDIFRMLDMLQDLRGTIAQQVTNHLTRDWDGRRFKPAL
 GRSWSFVPSRILLDVTEGAGTLGSSQRTVCLTKSPRQPTGLQEMIDIGTLGTEEQSPELPGKQT

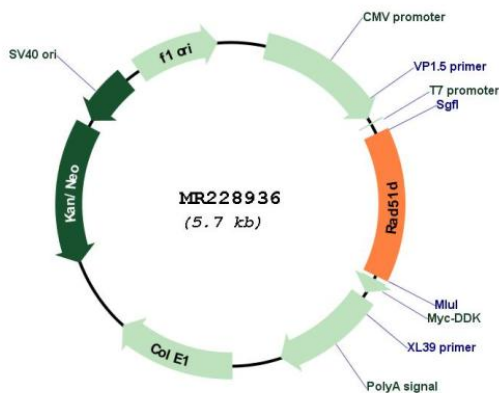
TRTRPLEQKLISEEDLAANDILDYKDDDDKV

Restriction Sites: SgfI-MluI

Cloning Scheme:



Plasmid Map:



ACCN: NM_001277942
ORF Size: 825 bp

OTI Disclaimer:	The molecular sequence of this clone aligns with the gene accession number as a point of reference only. However, individual transcript sequences of the same gene can differ through naturally occurring variations (e.g. polymorphisms), each with its own valid existence. This clone is substantially in agreement with the reference, but a complete review of all prevailing variants is recommended prior to use. More info
OTI Annotation:	This clone was engineered to express the complete ORF with an expression tag. Expression varies depending on the nature of the gene.
Components:	The ORF clone is ion-exchange column purified and shipped in a 2D barcoded Matrix tube containing 10ug of transfection-ready, dried plasmid DNA (reconstitute with 100 ul of water).
Reconstitution Method:	<ol style="list-style-type: none">1. Centrifuge at 5,000xg for 5min.2. Carefully open the tube and add 100ul of sterile water to dissolve the DNA.3. Close the tube and incubate for 10 minutes at room temperature.4. Briefly vortex the tube and then do a quick spin (less than 5000xg) to concentrate the liquid at the bottom.5. Store the suspended plasmid at -20°C. The DNA is stable for at least one year from date of shipping when stored at -20°C.
RefSeq:	NM_001277942.1 , NP_001264871.1
RefSeq Size:	6910 bp
RefSeq ORF:	828 bp
Locus ID:	19364
Cytogenetics:	11 50.3 cM
MW:	30.2 kDa
Gene Summary:	This gene belongs to the Rad51 gene family whose products play a major role in homologous recombination and DNA repair. The encoded protein interacts with other proteins of this family, including Rad51b, Rad51c and Xrcc2, and plays an essential role in both DNA repair and telomere maintenance. In humans, germline mutations in this gene may be associated with predisposition to ovarian cancer. Alternative splicing of this gene results in multiple transcript variants. [provided by RefSeq, May 2013]