

## Product datasheet for **MR228895**

### **Cd82 (NM\_001271431) Mouse Tagged ORF Clone**

#### Product data:

**Product Type:** Expression Plasmids  
**Product Name:** Cd82 (NM\_001271431) Mouse Tagged ORF Clone  
**Tag:** Myc-DDK  
**Symbol:** Cd82  
**Synonyms:** AA682076; AL023070; C33; IA4; Kai1; Tspan27  
**Mammalian Cell Selection:** Neomycin  
**Vector:** pCMV6-Entry (PS100001)  
**E. coli Selection:** Kanamycin (25 ug/mL)  
**ORF Nucleotide Sequence:** >MR228895 ORF sequence  
**Red=Cloning site Blue=ORF Green=Tags(s)**

TTTTGTAATACGACTCACTATAGGGCGGCCGGAATTCGTCGACTGGATCCGGTACCGAGGAGATCTGCC  
GCC**CGATCGCC**

ATGGGGGCAGGCTGTGTCAAAGTCACCAAGTATTTCTCTTCTTCAACTTGCTGTTCTTTATCCTGG  
GTGCTGTGATCCTGGGCTTCGGGGTGTGGATTCTTGCAGACAAGAACAGCTTCATTTCCGTCCTACAAAC  
CTCATCCAGCTCGCTGCAGGTGGGGCTTACGTCTTCATCGGTGTGGGCGCCATCACCATAGTGATGGGC  
TTCTGGGCTGTATCGGTGCTGCAATGAGGTCCGCTGCTTGCTGGGTCTGTACTTTGTCTTCTTCTG  
TGATCCTCATCGCACAGGTGACCGTAGGGTCTTCTACTTCAACGCTGACAAGCTGAAGAAGGAGAT  
GGGGAACACAGTGATGGACATCATTGCAACTACACTGCCAATGCCACCAAGTAGCCGCGAGGAGGCTGG  
GACTACGTGCAGGCGCAGGTCAAGTGCTGTGGCTGGGTGACCCACTACAACCTGGACAGAGAACGAGGAGC  
TCATGGGCTTTACCAAGACCACTTACCCATGCTCCTGCGAGAAGATCAAGGAAGAGGACAACCAGCTCAT  
TGTGAAGAAAGGATTCTGTGAGGCTGATAACAGCACTGTGAGCGAAAACAACCTGAGGATTGGCCTGTG  
AACACTGAGGGCTGCATGGAGAAGGCGCAGGCGTGGCTTCAGGAGAACTTCGGCATCCTTCTGGGCGTGT  
GTGCTGGTGTGCTGTCATTGAGCTGCTGGGGTGTTCCTGTCCATATGTTTGTGCCGTACATTCATTC  
TGAAGACTACAGCAAGGTCCCAAGTAC

**ACGCGT**ACGCGGCCGCTCGAGCAGAAACTCATCTCAGAAGAGGATCTGGCAGCAAATGATATCCTGGATT  
ACAAGGATGACGACGATAAGGTTTAA



[View online »](#)

**Protein Sequence:** >MR228895 protein sequence  
 Red=Cloning site Green=Tags(s)

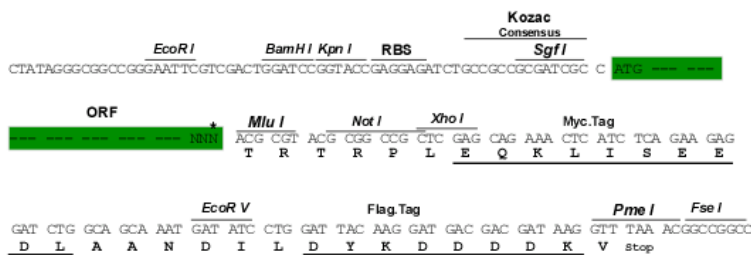
MGAGCVKVTKYFLFLFNLLFFILGAVILGFGVWILADKNSFISVLQTSSSSLQVGAYVFIGVGAITIVMG  
 FLGCIGAVNEVRCLLGLYFVFLLLILIAQVTVGVLFFYNADKLLKEMGNTVMDIIRNYTANATSSREEAW  
 DYVQAQVKCCGWVSHYNWTENEELMGFTKTTYPCSEKIKEEDNQLIVKKGFCADNSTVSENNPEDWPV  
 NTEGCMKAQAWLQENFGILLGVCAGVAIELLGLFLSICLCRYIHSSEDSYKVPKY

TRTRPLEQKLISEEDLAANDILDYKDDDDKV

**Restriction Sites:** SgfI-MluI

**Cloning Scheme:**

Cloning sites used for ORF Shuttling:



\* The last codon before the Stop codon of the ORF

**ACCN:** NM\_001271431

**ORF Size:** 798 bp

**OTI Disclaimer:** The molecular sequence of this clone aligns with the gene accession number as a point of reference only. However, individual transcript sequences of the same gene can differ through naturally occurring variations (e.g. polymorphisms), each with its own valid existence. This clone is substantially in agreement with the reference, but a complete review of all prevailing variants is recommended prior to use. [More info](#)

**OTI Annotation:** This clone was engineered to express the complete ORF with an expression tag. Expression varies depending on the nature of the gene.

**Components:** The ORF clone is ion-exchange column purified and shipped in a 2D barcoded Matrix tube containing 10ug of transfection-ready, dried plasmid DNA (reconstitute with 100 ul of water).

**Reconstitution Method:**

1. Centrifuge at 5,000xg for 5min.
2. Carefully open the tube and add 100ul of sterile water to dissolve the DNA.
3. Close the tube and incubate for 10 minutes at room temperature.
4. Briefly vortex the tube and then do a quick spin (less than 5000xg) to concentrate the liquid at the bottom.
5. Store the suspended plasmid at -20°C. The DNA is stable for at least one year from date of shipping when stored at -20°C.

**RefSeq:** [NM\\_001271431.1](#), [NP\\_001258360.1](#)

**RefSeq Size:** 1625 bp

**RefSeq ORF:** 801 bp

**Locus ID:** 12521

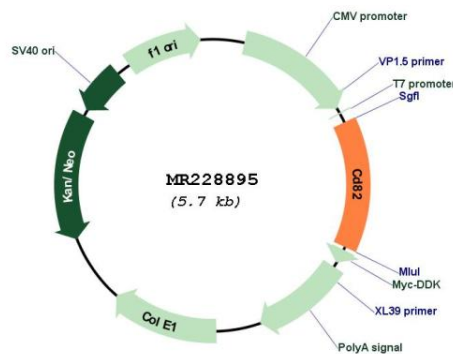
**UniProt ID:** [P40237](#)

**Cytogenetics:** 2 51.62 cM

**MW:** 29.6 kDa

**Gene Summary:** Associates with CD4 or CD8 and delivers costimulatory signals for the TCR/CD3 pathway. [UniProtKB/Swiss-Prot Function]

### Product images:



Circular map for MR228895