

Product datasheet for MR228828

Susd3 (NM_028340) Mouse Tagged ORF Clone

Product data:

Product Type:	Expression Plasmids
Product Name:	Susd3 (NM_028340) Mouse Tagged ORF Clone
Tag:	Myc-DDK
Symbol:	Susd3
Synonyms:	1700017111Rik; 2810440J20Rik
Mammalian Cell Selection:	Neomycin
Vector:	pCMV6-Entry (PS100001)
E. coli Selection:	Kanamycin (25 ug/mL)
ORF Nucleotide Sequence:	>MR228828 ORF sequence Red=Cloning site Blue=ORF Green=Tags(s)

TTTTGTAATACGACTCACTATAGGGCGGCCGGGAATTCGTCGACTGGATCCGGTACCGAGGAGATCTGCC
GCC**CGATCGCC**

ATGAGGAGGCTGTCACTCTCCAAGGTCACCTGCCTGGCCCTAGAGTCCAAGGCACCTGTGCTCAGCTCC
ATCCCCCGCCTCAAGGCACCTTGCAAGTCGTCGGGAGATGGCACATCTCTGGGGACTGTGCTCATATT
CCACTGCCCTCTGGCCACCAGATGGTGGGGTCTGGCCCTCACTTGTGCTGGAATGGGAGCACCGTT
GACTGGCTTTCAGGAAGCCCTGTGTGCAAAGCTGTGCCACCGCATGAGACCTTCGGCTTTAAGGTGGCAG
TGATCGCCTCCATTGTGAGCTGTGCCATCATCCTGCTCATGTCCATGGCCTTCCTCACCTGCTGCCTCCT
CAAGTGTGTGCAGAAAAATGAGCGGCGCGTGTGACAGGACGGCACAACCTCTGGTACCAGCTGAGAGGC
GAGGACCTGGAGACGGTACAAGCTGCCTACTTGGCCCTCAAGGGACACAACCACAATAACAGCAGCAGCG
TCGGTGGTGGCAATGGTGGCCCCAGTGGTGGTGGCGGCAAGCCAGGAATTCAGCACAGCCAGGCCATGA
CAACCACAGCTTACCACAGACCCTGGTGCATCAGAGAGCAGGCTGGTGTGACCACAGTGTGGACAAA
GACCCTTGGACTTTCAGGATGGGAACCTCCGGGCCCTGGTGGCTGCTCCAGCTCGCCAGGCACCTACGTGA
TGGTCCACGCTTGAACCTGCAGGGCTGGCCCTGGAAATCCTGGGAGGCCAAAGTGTACCTTCCAGG
G

AG**CGGACCG**ACGCGTACGCGGCCGCTCGAGCAGAACTCATCTCAGAAGAGGATCTGGCAGCAAATGATATCC
TGGATTACAAGGATGACGACGATAAGGTTTAA



[View online »](#)

Protein Sequence: >MR228828 protein sequence
 Red=Cloning site Green=Tags(s)

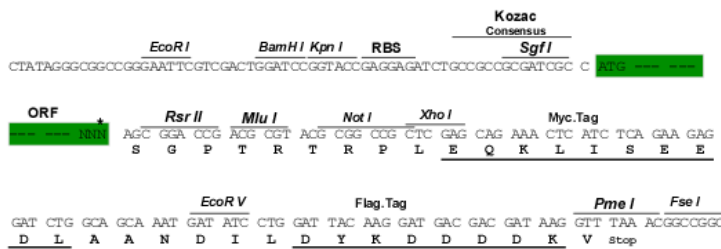
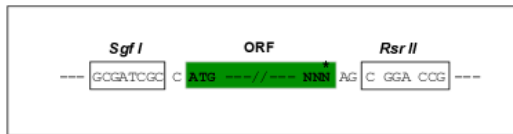
MRRLSLSKVTCLALESKGTCAQLHPPPQGTQVVRGDGTLGTVLIFHCPSGHQMVGSGLLTCAWNGSTV
 DWSSGSPVCKAVPPHETFGFKVAIVASIVSCAIIILLMSMAFLTCCLLKCVQKNERRRADRTAQLWYQLRG
 EDLETVQAAYLGLKGNHNHNSSSVGGNGGPGSGGGKPGIQHSQAHDNHSFTTDPGDIREQAGVTHSVDK
 DPWTFRMGTPGGCCSSSPGTYYMVHALNSAGLAPGNPGRPKVYLPG

SGPTRTRPLEQKLI SEEDLAANDILDYKDDDDKV

Restriction Sites: SgfI-RsrII

Cloning Scheme:

Cloning sites used for ORF Shuttling:



* The last codon before the Stop codon of the ORF

ACCN: NM_028340

ORF Size: 774 bp

OTI Disclaimer: The molecular sequence of this clone aligns with the gene accession number as a point of reference only. However, individual transcript sequences of the same gene can differ through naturally occurring variations (e.g. polymorphisms), each with its own valid existence. This clone is substantially in agreement with the reference, but a complete review of all prevailing variants is recommended prior to use. [More info](#)

OTI Annotation: This clone was engineered to express the complete ORF with an expression tag. Expression varies depending on the nature of the gene.

Components: The ORF clone is ion-exchange column purified and shipped in a 2D barcoded Matrix tube containing 10ug of transfection-ready, dried plasmid DNA (reconstitute with 100 ul of water).

Reconstitution Method:

1. Centrifuge at 5,000xg for 5min.
2. Carefully open the tube and add 100ul of sterile water to dissolve the DNA.
3. Close the tube and incubate for 10 minutes at room temperature.
4. Briefly vortex the tube and then do a quick spin (less than 5000xg) to concentrate the liquid at the bottom.
5. Store the suspended plasmid at -20°C. The DNA is stable for at least one year from date of shipping when stored at -20°C.

RefSeq: [NM_028340.2](#)

RefSeq Size: 1328 bp

RefSeq ORF: 774 bp

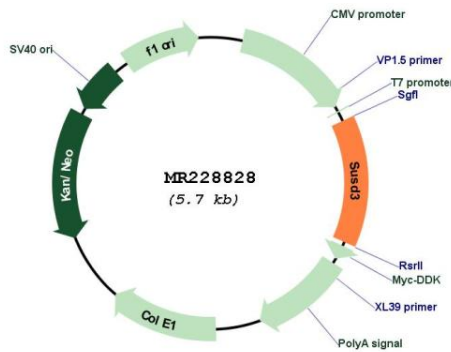
Locus ID: 66329

UniProt ID: [Q9D176](#)

Cytogenetics: 13 A5

MW: 26.9 kDa

Product images:



Circular map for MR228828