

## Product datasheet for **MR228810**

### **Etfbkmt (NM\_001252094) Mouse Tagged ORF Clone**

#### Product data:

Product Type:	Expression Plasmids
Product Name:	Etfbkmt (NM_001252094) Mouse Tagged ORF Clone
Tag:	Myc-DDK
Symbol:	Etfbkmt
Synonyms:	4833442J19Rik; A1256744; ETFB-KMT; Mettl20
Mammalian Cell Selection:	Neomycin
Vector:	pCMV6-Entry (PS100001)
E. coli Selection:	Kanamycin (25 ug/mL)
ORF Nucleotide Sequence:	>MR228810 ORF sequence Red=Cloning site Blue=ORF Green=Tags(s)

TTTTGTAATACGACTCACTATAGGGCGCCGGAATTCGTCGACTGGATCCGGTACCGAGGAGATCTGCC  
GCC**CGATCGC**C

ATGGCTTTCAGCCTGTGTTGAAAGCTCCCAGGAGCCCATGGAGTTTCCTGCAGGCTGTGAACAATGGGT  
CTCCCCTGTTTCTCTGGAGGACAGTGGGGAGCTGTTGGATCCTAAGATGAAAGCCTACCTGGAAGAGAA  
CACTGAAGTCACCAGCAGTGGTAGCCTTACCCCGAAAATCCAGTTACGGCTTTTAAACCCAGGTGCAAG  
TTTTGGTGGAAAGGGCTGACCTGTGGCCCTACAGTGATCCCTACTGGGCTATTTACTGGCCAGGAGGCC  
AGGCTCTGTCTAGGTATCTTTGGATAACCCTGCTGTTGTTAGAGGAAAGTCTGTCTTAGATCTTGGGAG  
TGGATGTGGAGCTACAGCCATTGCTGCCAAGATGAGTGGAGCATCAAAGATCTTGGCCAACGACATAGAC  
CCCATTGCAGGAATGGCGATTACACTAAATTGCAAATTAATGGACTGAATCCTTTTCTGTTTTAACTA  
AAAACATTTTGAATACCCAACAAGGTAAGTTTGATCTCATTGTTCTTGGAGATATGTTTTATGATGAAGA  
CCTTGCAGACAGTCTTCATCTGTGGCTGCAGAATACTTTGGACCCATGGAACCCGAGTACTGATTGGT  
GACCCTGGGAGGCCCCAGTTCAGTGGACATAGCATTCCGCATCACTGTACCAACTAGTAGAATACACAC  
TTCCAGAGCCAACCTCAGCAAGAGAACAATGGACTGACCACAAGTGTGTATGGGATTTTCATCCC

**ACGCGT**ACGCGGCCGCTCGAGCAGAACTCATCTCAGAAGAGGATCTGGCAGCAAATGATATCTGGATT  
ACAAGGATGACGACGATAAGGTTTAA



[View online »](#)

**Protein Sequence:** >MR228810 protein sequence  
 Red=Cloning site Green=Tags(s)

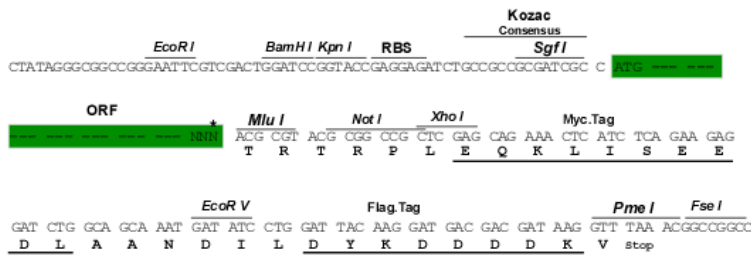
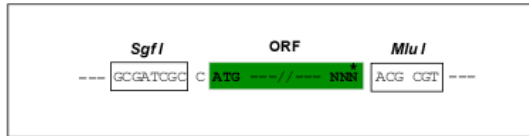
MAFSLCWKAPRSPWSFLQAVNNGSPLFLWRTVGSCLDPKMKAYLEENTEVTSSGSLTPEIQLRLLTPRCK  
 FWWERADLWPYSDPYWAIYWPGGQALSRYLDDNPVVRGKSVLDLGGCGATAIAAKMSGASKILANDID  
 PIAGMAITLNCKLNGLNPFVPLTKNILNTQQGKFDLIVLGD MFYDEDLADSLHLWLQNYFWTHGTRVLIG  
 DPGRPQFSGHSIRHQLYQLVEYTLPEPTQQENGLTTSVAVWDFHP

TRTRPLEQKLISEEDLAANDILDYKDDDDKV

**Restriction Sites:** SgfI-MluI

**Cloning Scheme:**

Cloning sites used for ORF Shuttling:



\* The last codon before the Stop codon of the ORF

**ACCN:** NM\_001252094

**ORF Size:** 768 bp

**OTI Disclaimer:** The molecular sequence of this clone aligns with the gene accession number as a point of reference only. However, individual transcript sequences of the same gene can differ through naturally occurring variations (e.g. polymorphisms), each with its own valid existence. This clone is substantially in agreement with the reference, but a complete review of all prevailing variants is recommended prior to use. [More info](#)

**OTI Annotation:** This clone was engineered to express the complete ORF with an expression tag. Expression varies depending on the nature of the gene.

**Components:** The ORF clone is ion-exchange column purified and shipped in a 2D barcoded Matrix tube containing 10ug of transfection-ready, dried plasmid DNA (reconstitute with 100 ul of water).

**Reconstitution Method:**

1. Centrifuge at 5,000xg for 5min.
2. Carefully open the tube and add 100ul of sterile water to dissolve the DNA.
3. Close the tube and incubate for 10 minutes at room temperature.
4. Briefly vortex the tube and then do a quick spin (less than 5000xg) to concentrate the liquid at the bottom.
5. Store the suspended plasmid at -20°C. The DNA is stable for at least one year from date of shipping when stored at -20°C.

**RefSeq:** [NM\\_001252094.1](#), [NP\\_001239023.1](#)

**RefSeq Size:** 1707 bp

**RefSeq ORF:** 768 bp

**Locus ID:** 320204

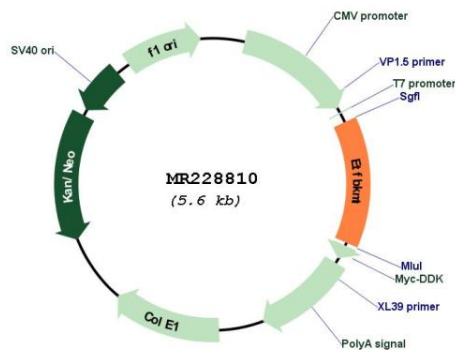
**UniProt ID:** [Q80ZM3](#)

**Cytogenetics:** 6 G3

**MW:** 28.6 kDa

**Gene Summary:** Protein-lysine methyltransferase that selectively trimethylates the flavoprotein ETFB in mitochondria. Thereby, may negatively regulate the function of ETFB in electron transfer from Acyl-CoA dehydrogenases.[UniProtKB/Swiss-Prot Function]

**Product images:**



Circular map for MR228810