

## Product datasheet for **MR228738**

### Crisp2 (NM\_001204071) Mouse Tagged ORF Clone

#### Product data:

**Product Type:** Expression Plasmids  
**Product Name:** Crisp2 (NM\_001204071) Mouse Tagged ORF Clone  
**Tag:** Myc-DDK  
**Symbol:** Crisp2  
**Synonyms:** CRISP-2; GAPDL5; Tpx-1; Tpx1  
**Mammalian Cell Selection:** Neomycin  
**Vector:** pCMV6-Entry (PS100001)  
**E. coli Selection:** Kanamycin (25 ug/mL)  
**ORF Nucleotide Sequence:** >MR228738 representing NM\_001204071  
Red=Cloning site Blue=ORF Green=Tags(s)

TTTTGTAATACGACTCACTATAGGGCGGCCGGAATTCGTCGACTGGATCCGGTACCGAGGAGATCTGCC  
GCC**CGATCGCC**

ATGGCTTGGTTCCAGGTAATGCTGTTTGTCTTTGCGTTGCTGCTGCGATCACCCTCACAGAAGGAAAGG  
ATCCAGACTTTACTTCTTTGTTAACTAACCACTACAAGTTCAAAGAGAGATCGTAAATAAACACAATGA  
GCTGAGGAGATCAGTTAACCTACTGGCAGCGACATACTAAAAATGGAATGGAGCATAACAAGCAACAACA  
AATGCTCAAAGTGGGCTAATAAGTGTATTTAGAACACAGTTCTAAAGATGACCGGAAGATCAATATAA  
GATGTGGTGAGAATCTCTATATGTCAACTGATCCTACCCTCTGGTCAACTGTAATCAAAGCTGGTACAA  
TAAAAATGAAGATTTTGTATGGTGTAGGAGCTAAACCAATTCAGCTGTCGGACATTACACTCAGCTT  
GTTTGGTATTCATCTTTCAAATTTGGATGTGGAATTGCTTACTGTCCCAATCAAGACAACCTGAAATATT  
TCTATGTTTGCCATTACTGTCCTATGGGTAACAATGTGATGAAAAAGAGCACCCCATATCAACAAGGAAC  
ACCTTGTGCTAGTTGTCCAATAACTGTGAAAAATGGGCTGTGCACCAATAGCTGTGATTTTGAAGATTTA  
CTTAGTAACTGTGAATCCTTGAAGACTTCAGCAGGCTGTAACATGAGTTGCTCAAGACAAAAGTGCCAGG  
CTACTTGTGGTGAAGACAAAATTCAT

**ACGCGT**ACGCGGCCGCTCGAGCAGAACTCATCTCAGAAGAGGATCTGGCAGCAAATGATATCCTGGATT  
ACAAGGATGACGACGATAAGGTTTAA



[View online »](#)

**Protein Sequence:** >MR228738 representing NM\_001204071  
Red=Cloning site Green=Tags(s)

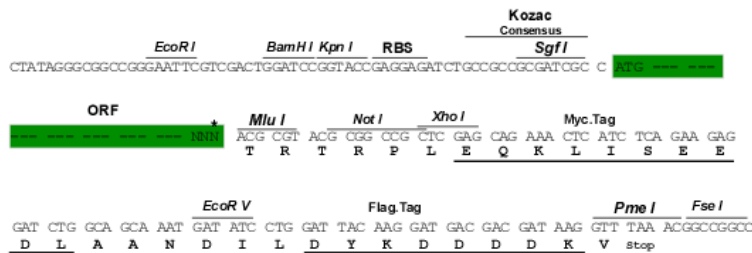
MAWFQVMLFVFAALLRSPLTEGKDPDFTSLLTNQLQVQREIVNKHNELRRSVNPTGSDILKMEWSIQATT  
 NAQKWANKCILEHSSKDDRKINIRCGENLYMSTDPTLWSTVIQSWYNENEDFVYGVGAKPNSAVGHYTL  
 VWYSSFKIGCGIAYCPNQDNLKYFYVCHYCPMGNVMKKSTPYQQGTPCASCPCNNCENGLCTNSCDFEDL  
 LSNCESLKTSAGCKHELLKTKCQATCLCEDKIH

TRTRPLEQKLISEEDLAANDILDYKDDDDKV

**Restriction Sites:** Sgfl-MluI

**Cloning Scheme:**

Cloning sites used for ORF Shuttling:



**ACCN:** NM\_001204071

**ORF Size:** 729 bp

**OTI Disclaimer:** The molecular sequence of this clone aligns with the gene accession number as a point of reference only. However, individual transcript sequences of the same gene can differ through naturally occurring variations (e.g. polymorphisms), each with its own valid existence. This clone is substantially in agreement with the reference, but a complete review of all prevailing variants is recommended prior to use. [More info](#)

**OTI Annotation:** This clone was engineered to express the complete ORF with an expression tag. Expression varies depending on the nature of the gene.

**Components:** The ORF clone is ion-exchange column purified and shipped in a 2D barcoded Matrix tube containing 10ug of transfection-ready, dried plasmid DNA (reconstitute with 100 ul of water).

**Reconstitution Method:**

1. Centrifuge at 5,000xg for 5min.
2. Carefully open the tube and add 100ul of sterile water to dissolve the DNA.
3. Close the tube and incubate for 10 minutes at room temperature.
4. Briefly vortex the tube and then do a quick spin (less than 5000xg) to concentrate the liquid at the bottom.
5. Store the suspended plasmid at -20°C. The DNA is stable for at least one year from date of shipping when stored at -20°C.

**RefSeq:** [NM\\_001204071.1](#), [NP\\_001191000.1](#)

**RefSeq Size:** 1451 bp

**RefSeq ORF:** 732 bp

**Locus ID:** 22024

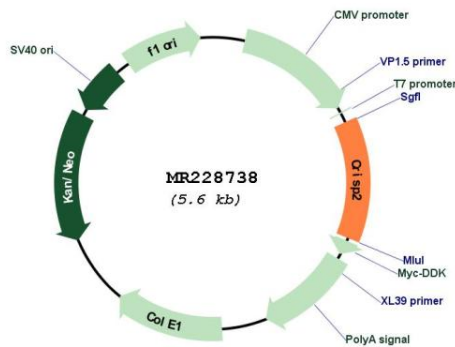
**UniProt ID:** [P16563](#)

**Cytogenetics:** 17 19.54 cM

**MW:** 27.6 kDa

**Gene Summary:** May regulate some ion channels' activity and thereby regulate calcium fluxes during sperm capacitation.[UniProtKB/Swiss-Prot Function]

### Product images:



Circular map for MR228738