

## Product datasheet for MR228652

### Cited1 (NM\_001276474) Mouse Tagged ORF Clone

#### Product data:

**Product Type:** Expression Plasmids  
**Product Name:** Cited1 (NM\_001276474) Mouse Tagged ORF Clone  
**Tag:** Myc-DDK  
**Symbol:** Cited1  
**Synonyms:** AI316840; AU019144; Msg1  
**Vector:** pCMV6-Entry (PS100001)  
**E. coli Selection:** Kanamycin (25 ug/mL)  
**Cell Selection:** Neomycin  
**ORF Nucleotide Sequence:** >MR228652 representing NM\_001276474  
Red=Cloning site Blue=ORF Green=Tags(s)

TTTTGTAATACGACTCACTATAGGGCGGCCGGAATTCGTCGACTGGATCCGGTACCGAGGAGATCTGCC  
GCC**CGGATCGCC**

ATGGAGGTGGAGTATACCGACCAACAGGCCAGCTGGCGGCATCAACTGCCACCGATTTATCGGACTTCT  
GCCCAGGCTCTGAAATGCCAACTATGTCGAGGCCCTGCACTTGATGTCAAGGGTGGCACCACCTCTGGGAA  
GGAGGATGCCAACAGGAGATGAACTCTCTGGCCTACTCCAACCTGGAGTGAAGGATCGCAAGGCAGTG  
ACTGTCCTGCACTACCCGGGGTCAACGCAAATGGAGCCAAAGCCAACGGAGTCCCACTAGCTCCTCTG  
GATCGACATCTCCAATAGGCTCTCTACTGCCACCCCTTCTTCCAACCCCATCCTTCAACCTGCATCC  
TACCCCTCACCTGATGGCCAGCATGCAGCTTCAAGCTTAATAGCCAGTACCAAGGGGCTGCGGCTACT  
GCTGCTGCTGCCCTCACTGGTGCAGGCCTACCAGGGGAGGAAGAGCCATGCAAACTGGGTCAACGCC  
CTCTGGTAGTGGGAGGGTCTCCGGATCTGTCTCTCTCTCTGCTGGTGGCCAGAGCCCTGCTCTCATTGA  
TTCTGACCCGGTGGATGAGGAGGTGCTGATGTCTCTGGTGGTTGAATTGGGGCTAGACCGAGCCAATGAG  
CTTCCCGAGCTGTGGCTGGGCGAGAATGAGTTTGATTTCACTGCAGATTTCCCTCTGGCTGC

**ACGCGT**ACGCGGCCGCTCGAGCAGAACTCATCTCAGAAGAGGATCTGGCAGCAAATGATATCCTGGATT  
ACAAGGATGACGACGATAAGGTTTAA



[View online »](#)

**Protein Sequence:** >MR228652 representing NM\_001276474  
Red=Cloning site Green=Tags(s)

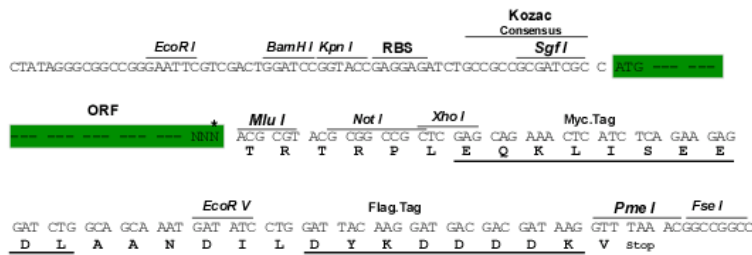
MEVEYTDQQAQLAASTATDLSDFCPGSEMPTMSRPALDVKGGTTSKGEDANQEMNSLAYSNLGVKDRKAV  
 TVLHYPGVTANGAKANGVPTSSSGSTSPIGSPTATPSSKPPSFNLHPTPHLMASMLQKQLNSQYQGAAAT  
 AAAALTGAGLPGEEEMPQNWVTAPLVVGGSPGVSVPAGAQPALIDSDPVDEEVLMSLVVELGLDRANE  
 LPELWLGQNEFDFTADFPSSG

TRTRPLEQKLISEEDLAANDILDYKDDDDKV

**Restriction Sites:** Sgfl-MluI

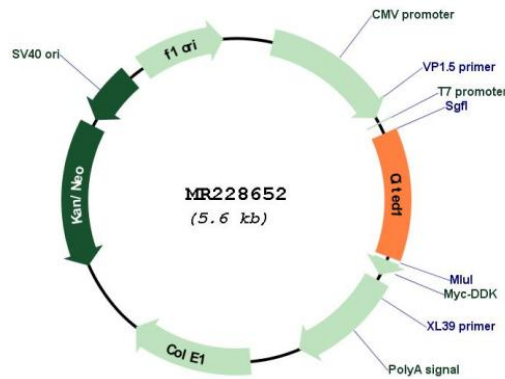
**Cloning Scheme:**

Cloning sites used for ORF Shuttling:



\* The last codon before the Stop codon of the ORF

**Plasmid Map:**



**ACCN:** NM\_001276474

**ORF Size:** 693 bp

<b>OTI Disclaimer:</b>	The molecular sequence of this clone aligns with the gene accession number as a point of reference only. However, individual transcript sequences of the same gene can differ through naturally occurring variations (e.g. polymorphisms), each with its own valid existence. This clone is substantially in agreement with the reference, but a complete review of all prevailing variants is recommended prior to use. <a href="#">More info</a>
<b>OTI Annotation:</b>	This clone was engineered to express the complete ORF with an expression tag. Expression varies depending on the nature of the gene.
<b>Components:</b>	The ORF clone is ion-exchange column purified and shipped in a 2D barcoded Matrix tube containing 10ug of transfection-ready, dried plasmid DNA (reconstitute with 100 ul of water).
<b>Reconstitution Method:</b>	<ol style="list-style-type: none"><li>1. Centrifuge at 5,000xg for 5min.</li><li>2. Carefully open the tube and add 100ul of sterile water to dissolve the DNA.</li><li>3. Close the tube and incubate for 10 minutes at room temperature.</li><li>4. Briefly vortex the tube and then do a quick spin (less than 5000xg) to concentrate the liquid at the bottom.</li><li>5. Store the suspended plasmid at -20°C. The DNA is stable for at least one year from date of shipping when stored at -20°C.</li></ol>
<b>RefSeq:</b>	<a href="#">NM_001276474.1</a> , <a href="#">NP_001263403.1</a>
<b>RefSeq Size:</b>	1020 bp
<b>RefSeq ORF:</b>	696 bp
<b>Locus ID:</b>	12705
<b>UniProt ID:</b>	<a href="#">P97769</a>
<b>Cytogenetics:</b>	X 45.25 cM
<b>MW:</b>	24.2 kDa
<b>Gene Summary:</b>	Transcriptional coactivator of the p300/CBP-mediated transcription complex. Enhances SMAD-mediated transcription by strengthening the functional link between the DNA-binding SMAD transcription factors and the p300/CBP transcription coactivator complex. Stimulates estrogen-dependent transactivation activity mediated by estrogen receptors signaling; stabilizes the interaction of estrogen receptor ESR1 and histone acetyltransferase EP300. Positively regulates TGF-beta signaling through its association with the SMAD/p300/CBP-mediated transcriptional coactivator complex. Induces transcription from estrogen-responsive promoters and protection against cell death. Potentiates EGR2-mediated transcriptional activation activity from the ERBB2 promoter. Acts as an inhibitor of osteoblastic mineralization through a cAMP-dependent parathyroid hormone receptor signaling. May play a role in pigmentation of melanocytes. Associates with chromatin to the estrogen-responsive TGF-alpha promoter region in a estrogen-dependent manner. [UniProtKB/Swiss-Prot Function]