

## Product datasheet for **MR228647**

### Il15ra (NM\_001271499) Mouse Tagged ORF Clone

#### Product data:

**Product Type:** Expression Plasmids  
**Product Name:** Il15ra (NM\_001271499) Mouse Tagged ORF Clone  
**Tag:** Myc-DDK  
**Symbol:** Il15ra  
**Synonyms:** AA690181; IL-15RA  
**Vector:** pCMV6-Entry (PS100001)  
**E. coli Selection:** Kanamycin (25 ug/mL)  
**Cell Selection:** Neomycin  
**ORF Nucleotide Sequence:** >MR228647 representing NM\_001271499  
 Red=Cloning site Blue=ORF Green=Tags(s)

TTTTGTAATACGACTCACTATAGGGCGGCCGGAATTCGTCGACTGGATCCGGTACCGAGGAGATCTGCC  
 GCC**CGATCGCC**

ATGGCCTCGCCGAGCTCCGGGGCTATGGAGTCCAGGCCATTCTGTGTTGCTGCTGCTGCTGTTGCTAC  
 TGTTGCTCCCGCTGAGGGTGACGCCGGCACCACGTGTCCACCTCCCGTATCTATTGAGCATGCTGACAT  
 CCGGGTCAAGAATTACAGTGTGAACTCCAGGGAGAGGTATGTCTGTAACCTGGCTTTAAGCGGAAAGCT  
 GGAACATCCACCCTGATTGAGTGTGTGATCAACAAGAACAATAATGTTGCCCACTGGACAACCTCCAGCC  
 TCAAGTGCATCAGAGACCCCTCCCTAGCTCACTACAGTCCAGTGCCAACAGTAGTGACACCAAAGGTGAC  
 CTCACAGCCAGAGAGCCCTCCCTCTGCAAAAGGAACTACAGGGACAGGCAGTCACAAGTCTCCCGA  
 GCCCATCTCTTGAGCAACAATGACCTTGAGCCTACAGCCTCCACCTCCCTCAGGATAACAGAGATTT  
 CTCCCACAGTTCCAAAATGACGAAAGTGGCCATCTCTACATCGGTCCTTTGGTTGGTGCAGGGGTTGT  
 GATGGCTTTCTGGCCTGGTACATCAAATCAAGGCAGCCTTCTCAGCCGTGCCGTGTTGAGGTGAAACC  
 ATGGAACAGTACCAATGACTGTGAGGGCCAGCAGCAAGGAGGATGAAGACACAGGAGCC

**ACGCGT**ACGCGGCCGCTCGAGCAGAACTCATCTCAGAAGAGGATCTGGCAGCAAATGATATCCTGGATT  
 ACAAGGATGACGACGATAAGGTTTAA



[View online »](#)

**Protein Sequence:** >MR228647 representing NM\_001271499  
 Red=Cloning site Green=Tags(s)

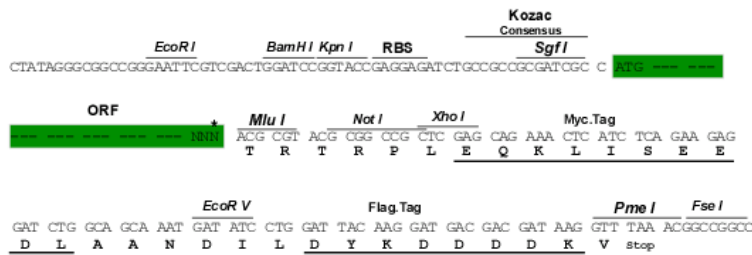
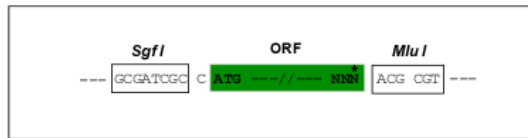
MASPQLRGYGVQAIPVLLLLLLLLLLPLRVTPGTTCPPPVSIHADIRVKNYSVNSRERYVCNSGFKRKA  
 GTSTLIECVINKNTNVAHWTTPSLKCIRDPSLAHYSPVPTVVTPKVTSQPESPSAKGTTGTGSHKSSR  
 APSLAATMTLEPTASTSLRITEISPHSSKMTKVAISTSVLLVGAGVMAFLAWYIKSRQPSQPCRVEVET  
 METVPMTVRASSEDEDTGA

TRTRPLEQKLISEEDLAANDILDYKDDDDKV

**Restriction Sites:** Sgfl-MluI

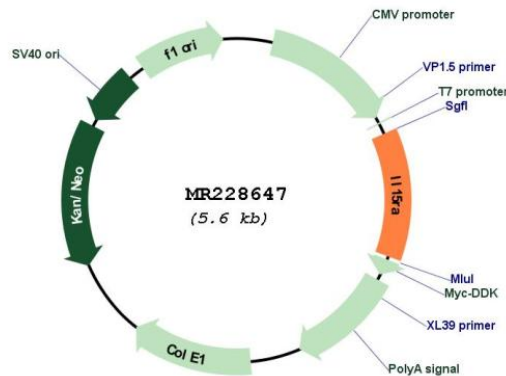
**Cloning Scheme:**

Cloning sites used for ORF Shuttling:



\* The last codon before the Stop codon of the ORF

**Plasmid Map:**



**ACCN:** NM\_001271499

**ORF Size:** 690 bp

<b>OTI Disclaimer:</b>	The molecular sequence of this clone aligns with the gene accession number as a point of reference only. However, individual transcript sequences of the same gene can differ through naturally occurring variations (e.g. polymorphisms), each with its own valid existence. This clone is substantially in agreement with the reference, but a complete review of all prevailing variants is recommended prior to use. <a href="#">More info</a>
<b>OTI Annotation:</b>	This clone was engineered to express the complete ORF with an expression tag. Expression varies depending on the nature of the gene.
<b>Components:</b>	The ORF clone is ion-exchange column purified and shipped in a 2D barcoded Matrix tube containing 10ug of transfection-ready, dried plasmid DNA (reconstitute with 100 ul of water).
<b>Reconstitution Method:</b>	<ol style="list-style-type: none"><li>1. Centrifuge at 5,000xg for 5min.</li><li>2. Carefully open the tube and add 100ul of sterile water to dissolve the DNA.</li><li>3. Close the tube and incubate for 10 minutes at room temperature.</li><li>4. Briefly vortex the tube and then do a quick spin (less than 5000xg) to concentrate the liquid at the bottom.</li><li>5. Store the suspended plasmid at -20°C. The DNA is stable for at least one year from date of shipping when stored at -20°C.</li></ol>
<b>RefSeq:</b>	<a href="#">NM_001271499.1</a> , <a href="#">NP_001258428.1</a>
<b>RefSeq Size:</b>	1565 bp
<b>RefSeq ORF:</b>	693 bp
<b>Locus ID:</b>	16169
<b>UniProt ID:</b>	<a href="#">Q60819</a>
<b>Cytogenetics:</b>	2 8.97 cM
<b>MW:</b>	25.1 kDa
<b>Gene Summary:</b>	High-affinity receptor for interleukin-15 (PubMed:17947230). Can signal both in cis and trans where IL15R from one subset of cells presents IL15 to neighboring IL2RG-expressing cells (PubMed:17947230). In neutrophils, binds and activates kinase SYK in response to IL15 stimulation (By similarity). In neutrophils, required for IL15-induced phagocytosis in a SYK-dependent manner (By similarity).[UniProtKB/Swiss-Prot Function]