

Product datasheet for MR228641

Csn2 (NM_001286020) Mouse Tagged ORF Clone

Product data:

Product Type: Expression Plasmids
 Product Name: Csn2 (NM_001286020) Mouse Tagged ORF Clone
 Tag: Myc-DDK
 Symbol: Csn2
 Synonyms: Csnb
 Vector: pCMV6-Entry (PS100001)
 E. coli Selection: Kanamycin (25 ug/mL)
 Cell Selection: Neomycin
 ORF Nucleotide Sequence: >MR228641 representing NM_001286020
 Red=Cloning site Blue=ORF Green=Tags(s)

TTTTGTAATACGACTCACTATAGGGCGGCCGGAATTCGTCGACTGGATCCGGTACCGAGGAGATCTGCC
 GCCGCGATCGCC

ATGAAGGTCTTCATCCTCGCCTGCCTTGCCCTTGCTCTTGAAGAGAGACTACATTTACTGTATCCT
 CTGAGACTGATAGTATTTCCAGTGAGGAATCTGTTGAACATATCAATGAGAACTTCAGAAGGTGAATCT
 CATGGGACAGCTGCAGGCAGAGGATGTGCTCCAGGCTAAAGTTCCTCCAGCATCCAGTCACAGCCCAG
 GCCTTTCCATATGCTCAGGCTCAAACCATCTCTTGAATCCCGTCCCACAAAACATCCAGCCTATTGCTC
 AACCCCTGTGGTGCCATCTCTTGGGCCTGTCATTTCTCCTGAACTGGAATCCTTCTTAAAGCTAAAGC
 CACCATCCTTCCAAGCAGCAACAGATGCCCTCCTTAACTCTGAACTGTGCTCCGCCTCATAAATCT
 CAAATCCCAGCCTTGCCAGTCTTGCTAATCTGCACCTTCCTCAGTCTCTGGTCCAGCTCCTGGCACAGG
 TTGTTCCAGGCTTTTCTCAGACTCACCTGGTTTCTTCTCAGACCCAGCTGTCTTCTCAGTCCAAAGT
 TCTGTACTTTCTGCAGCAAGTAGCACCTTCCTCCACAAGATATGTCTGTCCAAGACCTTCTGCAGTAC
 CTAGAATTCTTAACCCACCGTCAATTCCCTGCCACTCCACAACATTCCGTTTCTGTC

ACGCGTACGCGGCCGCTCGAGCAGAACTCATCTCAGAAGAGGATCTGGCAGCAAATGATATCCTGGATT
 ACAAGGATGACGACGATAAGGTTTAA



[View online »](#)

Protein Sequence: >MR228641 representing NM_001286020
 Red=Cloning site Green=Tags(s)

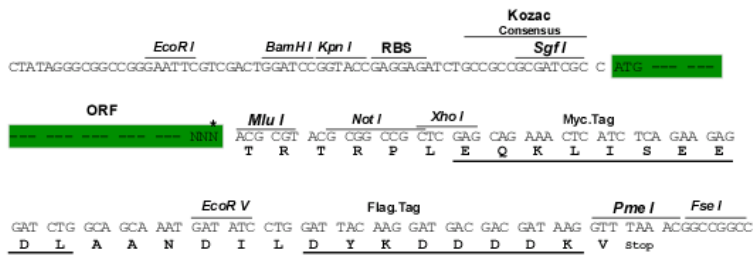
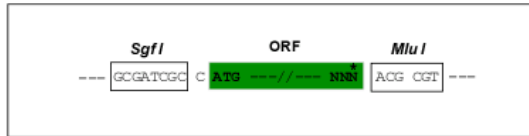
MKVFILACLVALALARETTFTVSSETDISSEESVEHINEKLQKVNLMGQLQAEDVLQAKVHSSIQSQPQ
 AFPYAQAQTISCNPVQNIQPIAQPVPVPSLGPVISPELESFLKAKATILPKHKQMPLLNSETVLRRLINS
 QIPSLASLANLHLPQSLVQLLAQVVQAFPPQTHLVSSQTQLSLPQSKVL YFLQQVAPFLPQDMSVQDLLQY
 LELLNPTVQFPATPQHSVSV

TRTRPLEQKLISEEDLAANDILDYKDDDDKV

Restriction Sites: Sgfl-MluI

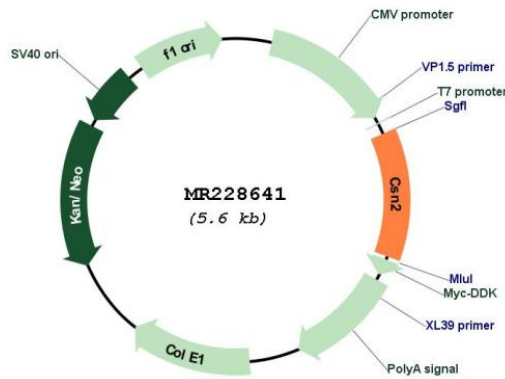
Cloning Scheme:

Cloning sites used for ORF Shuttling:



* The last codon before the Stop codon of the ORF

Plasmid Map:



ACCN: NM_001286020

ORF Size: 690 bp

OTI Disclaimer:	The molecular sequence of this clone aligns with the gene accession number as a point of reference only. However, individual transcript sequences of the same gene can differ through naturally occurring variations (e.g. polymorphisms), each with its own valid existence. This clone is substantially in agreement with the reference, but a complete review of all prevailing variants is recommended prior to use. More info
OTI Annotation:	This clone was engineered to express the complete ORF with an expression tag. Expression varies depending on the nature of the gene.
Components:	The ORF clone is ion-exchange column purified and shipped in a 2D barcoded Matrix tube containing 10ug of transfection-ready, dried plasmid DNA (reconstitute with 100 ul of water).
Reconstitution Method:	<ol style="list-style-type: none">1. Centrifuge at 5,000xg for 5min.2. Carefully open the tube and add 100ul of sterile water to dissolve the DNA.3. Close the tube and incubate for 10 minutes at room temperature.4. Briefly vortex the tube and then do a quick spin (less than 5000xg) to concentrate the liquid at the bottom.5. Store the suspended plasmid at -20°C. The DNA is stable for at least one year from date of shipping when stored at -20°C.
RefSeq:	NM_001286020.1 , NP_001272949.1
RefSeq Size:	1126 bp
RefSeq ORF:	693 bp
Locus ID:	12991
UniProt ID:	P10598
Cytogenetics:	5 43.56 cM
MW:	25.7 kDa
Gene Summary:	Important role in determination of the surface properties of the casein micelles. [UniProtKB/Swiss-Prot Function]