

Product datasheet for **MR228628**

Nat8f7 (NM_001253910) Mouse Tagged ORF Clone

Product data:

Product Type: Expression Plasmids
Product Name: Nat8f7 (NM_001253910) Mouse Tagged ORF Clone
Tag: Myc-DDK
Symbol: Nat8f7
Synonyms: 100043497; Gm4477
Vector: pCMV6-Entry (PS100001)
E. coli Selection: Kanamycin (25 ug/mL)
Cell Selection: Neomycin
ORF Nucleotide Sequence: >MR228628 representing NM_001253910
Red=Cloning site Blue=ORF Green=Tags(s)

TTTTGTAATACGACTCACTATAGGGCGCCGGAATTCGTCGACTGGATCCGGTACCGAGGAGATCTGCC
GCC**CGATCGCC**

ATGGCTCCTTATCATATCCGAAAATACCAGGACAGCGACCACAGGAGTGTGGTGGATTTGTCCGCAGAG
GCATGGAGGAGCACATCCCCGCCACCTTCGCCACATGCTGCTGCTGCCCGAACCTCCTGCTCTTACT
CGGGTCCCTTACTCTATTCTGGCCTCAGGCTCCTGGCTTCTGGTTCTTCTGTCCATCCTTACCCTC
TTTCTTTCCCTGTGGTTCCTTGCAAAATACACATGGGAAAAGCATGTGATGAACTGTTTGCACACAGACA
TGGCTGACATCACCAGAACCTACATGAGTTCTCACTCCTCCTGCTTCTGGGTAGCTGAGTCTAGAGGTCA
GACAGTGGGCATGGTGGCTGCTCGGCCAGTGAAGGACCCCTCTTGCAGAAGAAGCAACTGCAGCTACTT
CACCTCTCTGTGCATTGCAGCACCGAAGAGAAGGCTAGGAAAAGCTATGGTCAGGACTGTCTCCAAT
TTGCACAGATGCAGGGCTTCAGTGAAGTTGTCTTTCCACCAGCATGCTGCAGTACGCAGCCCTGGCTCT
CTACCAGGGCATGGGCTTCCAGAAGACTGGCGAGACCTTCTACACCTATTTGTCCAGACTAAGGAAATCT
CCAATGATAAACTTAAAGTATAGCCTCACTTCTCCTTGGGAAGGGACCTG

ACGCGTACGCGGCCGCTCGAGCAGAAACTCATCTCAGAAGAGGATCTGGCAGCAAATGATATCCTGGATT
ACAAGGATGACGACGATAAGGTTTAA



[View online »](#)

Protein Sequence: >MR228628 representing NM_001253910
 Red=Cloning site Green=Tags(s)

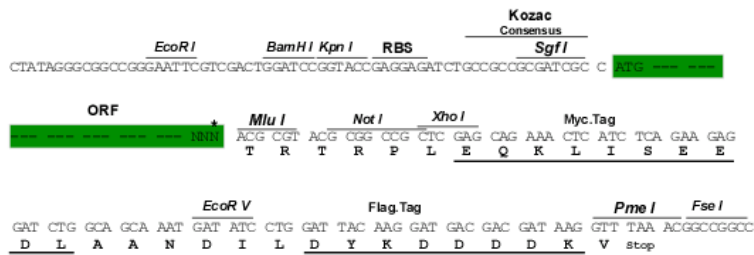
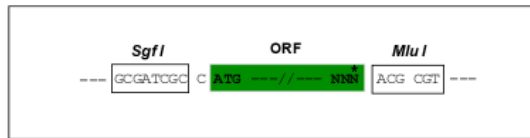
MAPYHIRKYQSDHRSVVDLFRGMEEHIPATFRHMLLLPRTL LLLLGVPLTLFLASGSWLLVLLSILTL
 FLSLWFLAKYTWEKHVMNCLHTDMADITRTYMSHSSCFWVAESRGQTVGMVAARPVKDLLQKKQLQLL
 HLSVSLQHRREGLGKAMVRTVLQFAQM QGFSEVVLSTSM LQYAALALYQGMGFQKTGETFYTYLSRLRKS
 PMINLKYSLTSPWEGDL

TRTRPLEQKLISEEDLAANDILDYKDDDDKV

Restriction Sites: Sgfl-MluI

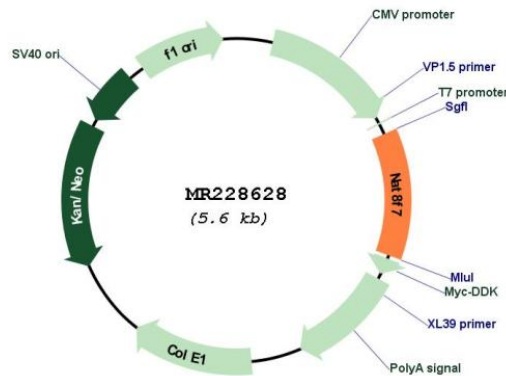
Cloning Scheme:

Cloning sites used for ORF Shuttling:



* The last codon before the Stop codon of the ORF

Plasmid Map:



ACCN: NM_001253910

ORF Size: 681 bp

OTI Disclaimer:	The molecular sequence of this clone aligns with the gene accession number as a point of reference only. However, individual transcript sequences of the same gene can differ through naturally occurring variations (e.g. polymorphisms), each with its own valid existence. This clone is substantially in agreement with the reference, but a complete review of all prevailing variants is recommended prior to use. More info
OTI Annotation:	This clone was engineered to express the complete ORF with an expression tag. Expression varies depending on the nature of the gene.
Components:	The ORF clone is ion-exchange column purified and shipped in a 2D barcoded Matrix tube containing 10ug of transfection-ready, dried plasmid DNA (reconstitute with 100 ul of water).
Reconstitution Method:	<ol style="list-style-type: none">1. Centrifuge at 5,000xg for 5min.2. Carefully open the tube and add 100ul of sterile water to dissolve the DNA.3. Close the tube and incubate for 10 minutes at room temperature.4. Briefly vortex the tube and then do a quick spin (less than 5000xg) to concentrate the liquid at the bottom.5. Store the suspended plasmid at -20°C. The DNA is stable for at least one year from date of shipping when stored at -20°C.
RefSeq:	NM_001253910.2 , NP_001240839.2
RefSeq Size:	1276 bp
RefSeq ORF:	684 bp
Locus ID:	100043497
UniProt ID:	E0CYR6
Cytogenetics:	6
MW:	26.6 kDa
Gene Summary:	Has histone acetyltransferase activity in vitro, with specificity for histone H4.[UniProtKB/Swiss-Prot Function]