

Product datasheet for **MR228622**

Plpp5 (NM_001293703) Mouse Tagged ORF Clone

Product data:

Product Type: Expression Plasmids
Product Name: Plpp5 (NM_001293703) Mouse Tagged ORF Clone
Tag: Myc-DDK
Symbol: Plpp5
Synonyms: 1810019D05Rik; 2310022A04Rik; AW045471; Ppapdc1; Ppapdc1b
Vector: pCMV6-Entry (PS100001)
E. coli Selection: Kanamycin (25 ug/mL)
Cell Selection: Neomycin
ORF Nucleotide Sequence: >MR228622 representing NM_001293703
Red=Cloning site Blue=ORF Green=Tags(s)

TTTTGTAATACGACTCACTATAGGGCGGCCGGAATTCGTCGACTGGATCCGGTACCGAGGAGATCTGCC
GCC**GCGATCGCC**

ATGGGGACGGCGCCCTGGGAGCCGAGCTGGGCGTGCGGGTCCTGCTCTTTGTGGCTTTCCTGGTGACCG
AGCTGCTCCCTCCCTCCAGCGGGGATCCAGCCGAGGAGCTGTGGCTCTACAGGAACCGTACGTGGA
GGCGGAATACTTCCCCACCGCCGATGTTTGTGATTGCCTTCTCACTCCACTGTCCTGATCTTCCTC
GCCAAGTTTCTAAGGAAAGCTGACGCTACCGACAGCAAGCAAGCCTGCCTCGCTGCCAGCCTTGCCCTAG
CTCTGAATGGTGTCTTTACCAACATAATCAAAGTATAGTGGGCAGGCCCGCCAGACTTCTTCTACCG
CTGCTTCCCTGATGGGCTGGCCATTCTGATCTGACGTGACGGGGGACGAGGATGTGGTGAACGAGGGC
CGAAAGAGCTTCCCCAGTGGACATTCTTCTTTGCATTTGCTGGTCTGGCCTTTGCTTCTTCTACCTGG
CAGGGAAGTTACTGCTTACGCCACAAGGCCGAGGGAAGTCTGGAGGCTCTGTGCCTTCTGTCAACC
TTTACTCTTTCAGCCGTGATTGCACTGTCCGCACGTGTGACTACAAGCACCCTGGCAAGGCTGGTAC
AAGGACATGCACAGATGCTCTCAGCTTTTATGAGGGTGTGGGATT

ACGCGTACGCGGCCGCTCGAGCAGAAACTCATCTCAGAAGAGGATCTGGCAGCAAATGATATCCTGGATT
ACAAGGATGACGACGATAAGGTTTAA



[View online »](#)

Protein Sequence: >MR228622 representing NM_001293703
 Red=Cloning site Green=Tags(s)

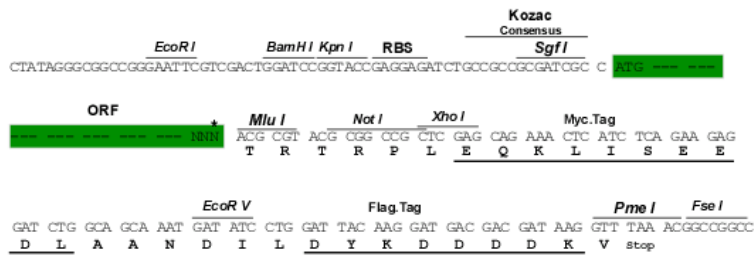
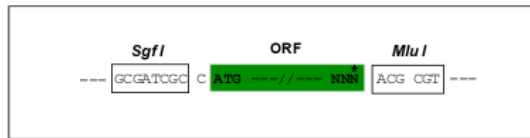
MGTAALGAELGVRVLLFVAVLVTPELLPPFQRRIQPEELWLYRNPYVEAEYFPTGRMFVIAFLTPLSLIFL
 AKFLRKADATDSKQACLAASLALALNGVFTNI IKLIVGRPRPDFFYRCFPDGLAHSDLTCTGDDEVVNEG
 RKSFPSPGHSSFAFAGLAFASFYLAGKLHCFTPQGRGKSWRLCAFLSPLLFAAVIALSRTCDDYKHHWQGWY
 KDMHRCSQLFMRVLGI

TRTRPLEQKLISEEDLAANDILDYKDDDDKV

Restriction Sites: Sgfl-MluI

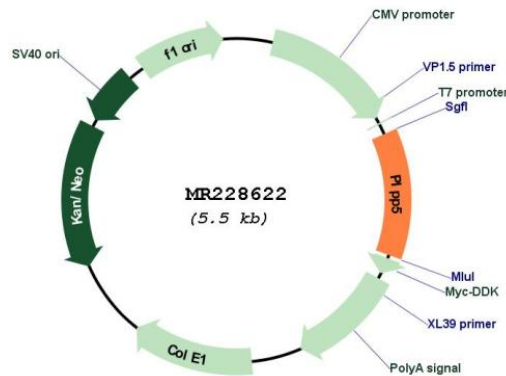
Cloning Scheme:

Cloning sites used for ORF Shuttling:



* The last codon before the Stop codon of the ORF

Plasmid Map:



ACCN: NM_001293703

ORF Size: 678 bp

OTI Disclaimer:	The molecular sequence of this clone aligns with the gene accession number as a point of reference only. However, individual transcript sequences of the same gene can differ through naturally occurring variations (e.g. polymorphisms), each with its own valid existence. This clone is substantially in agreement with the reference, but a complete review of all prevailing variants is recommended prior to use. More info
OTI Annotation:	This clone was engineered to express the complete ORF with an expression tag. Expression varies depending on the nature of the gene.
Components:	The ORF clone is ion-exchange column purified and shipped in a 2D barcoded Matrix tube containing 10ug of transfection-ready, dried plasmid DNA (reconstitute with 100 ul of water).
Reconstitution Method:	<ol style="list-style-type: none">1. Centrifuge at 5,000xg for 5min.2. Carefully open the tube and add 100ul of sterile water to dissolve the DNA.3. Close the tube and incubate for 10 minutes at room temperature.4. Briefly vortex the tube and then do a quick spin (less than 5000xg) to concentrate the liquid at the bottom.5. Store the suspended plasmid at -20°C. The DNA is stable for at least one year from date of shipping when stored at -20°C.
RefSeq:	NM_001293703.1 , NP_001280632.1
RefSeq Size:	1569 bp
RefSeq ORF:	681 bp
Locus ID:	71910
Cytogenetics:	8
MW:	25.8 kDa
Gene Summary:	Displays magnesium-independent phosphatidate phosphatase activity in vitro. Catalyzes the conversion of phosphatidic acid to diacylglycerol (By similarity).[UniProtKB/Swiss-Prot Function]