

Product datasheet for **MR228590**

Rab27a (NM_001301232) Mouse Tagged ORF Clone

Product data:

Product Type: Expression Plasmids
Product Name: Rab27a (NM_001301232) Mouse Tagged ORF Clone
Tag: Myc-DDK
Symbol: Rab27a
Synonyms: 2210402C08Rik; 2410003M20Rik; 4933437C11Rik; ash
Mammalian Cell Selection: Neomycin
Vector: pCMV6-Entry (PS100001)
E. coli Selection: Kanamycin (25 ug/mL)
ORF Nucleotide Sequence: >MR228590 ORF sequence
Red=Cloning site Blue=ORF Green=Tags(s)

TTTTGTAATACGACTCACTATAGGGCGGCCGGGAATTCGTCGACTGGATCCGGTACCGAGGAGATCTGCC
GCC**CGATCGCC**

ATGTCGGATGGAGATTACGATTACCTCATCAAGTTCTTGGCCTTGGGAGACTCTGGGTAGGGAAGACCA
GTGTACTCTACCACTACTGATGGCAAGTTCAACTCCAAATTCATCACCACAGTGGGCATTGATTTTCAG
GGAAAAGAGAGTGGTGTACAGAGCCAATGGGCCAGATGGAGCTGTGGCCGAGGCCAGAGAATCCACCTG
CAGTTATGGGACACGGCGGGCAGGAGAGGTTTCGTAGCTTAACCACTGCATTCTCAGGGACGCTATGG
GTTTCCTGCTTCTGTTTCGACCTGACAAATGAGCAAAGTTCTCAATGTCCGAACTGGATAAGCCAGCT
ACAGATGCACGGTACTGTGAAAACCCAGATATAGTGCTGTGTGAAAT AAGAGTGACCTGGAAGACCAG
AGGGCAGTGAAAGAGGAGGAGGCCCGGAACTTGCCGAGAAGTACGGAATCCCTATTTTAAAACCAAGT
CTGCCAACGGGACAAACATAAGCCACGCGATTGAGATGCTCCTGGACCTGATCATGAAGCGGATGGAGCG
GTGTGTGGACAAGTCTGGATTCCGGAGGGAGTGGTACGGTCCAACGGCCATACCTCTGCGGATCAGCTA
AGTGAGGAGAAGGAGAAGGGTTGTGTGGCTGT

AG**CGGACCC**ACGCGTACGCGGCCGCTCGAGCAGAACTCATCTCAGAAGAGGATCTGGCAGCAAATGATATCC
TGGATTACAAGGATGACGACGATAAGGTTTAA



[View online »](#)

Protein Sequence: >MR228590 protein sequence
 Red=Cloning site Green=Tags(s)

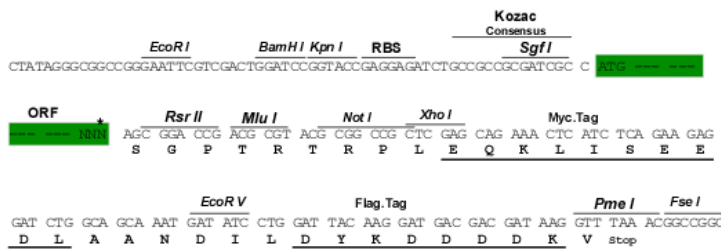
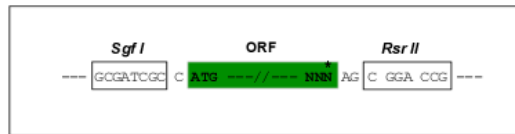
MSDGDYDYL IKFLALGDSVGVKTSVLYQYTDGKFN SKFITTVGIDFREKRVVYRANGPDGAVGRGQRIHL
 QLWDTAGQERFRSLTTAFFRDAMGFLLLFDLTNEQSFLNVRNWI SQLQMHAYCENPDIVLCGNKSDLEDQ
 RAVKEEEARELAEKYGIPIYFETSAANGTNI SHAIEMLLDLIMKRMERCVDKSWIPEGVVRNSNGHTSADQL
 SEEKEKGLCGC

SGPTRTRPLEQKLI SEEDLAANDILDYKDDDDKV

Restriction Sites: SgfI-RsrII

Cloning Scheme:

Cloning sites used for ORF Shuttling:



* The last codon before the Stop codon of the ORF

ACCN: NM_001301232

ORF Size: 663 bp

OTI Disclaimer: The molecular sequence of this clone aligns with the gene accession number as a point of reference only. However, individual transcript sequences of the same gene can differ through naturally occurring variations (e.g. polymorphisms), each with its own valid existence. This clone is substantially in agreement with the reference, but a complete review of all prevailing variants is recommended prior to use. [More info](#)

OTI Annotation: This clone was engineered to express the complete ORF with an expression tag. Expression varies depending on the nature of the gene.

Components: The ORF clone is ion-exchange column purified and shipped in a 2D barcoded Matrix tube containing 10ug of transfection-ready, dried plasmid DNA (reconstitute with 100 ul of water).

Reconstitution Method:

1. Centrifuge at 5,000xg for 5min.
2. Carefully open the tube and add 100ul of sterile water to dissolve the DNA.
3. Close the tube and incubate for 10 minutes at room temperature.
4. Briefly vortex the tube and then do a quick spin (less than 5000xg) to concentrate the liquid at the bottom.
5. Store the suspended plasmid at -20°C. The DNA is stable for at least one year from date of shipping when stored at -20°C.

RefSeq: [NM_001301232.1](#), [NP_001288161.1](#)

RefSeq Size: 3108 bp

RefSeq ORF: 666 bp

Locus ID: 11891

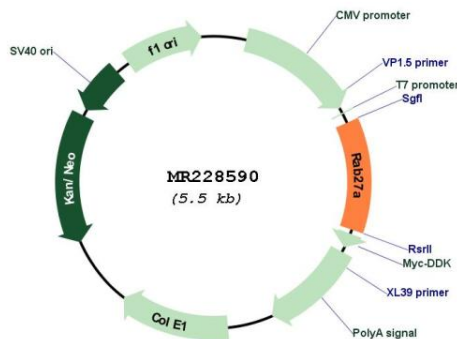
UniProt ID: [Q9ERI2](#)

Cytogenetics: 9 40.08 cM

MW: 25 kDa

Gene Summary: The protein encoded by this gene is a member of the Rab family of proteins, which is the largest family within the Ras superfamily of GTPases. This gene product is thought to regulate vesicular transport, together with its specific effectors. Mutations in this gene cause several defects, including actin-based melanosome transport defects and immunodeficiency. Mutations in the human ortholog of this gene are associated with Griscelli syndrome type 2. Alternative splicing results in multiple transcript variants. [provided by RefSeq, Jul 2014]

Product images:



Circular map for MR228590