

Product datasheet for MR228577

Prrg1 (NM_001289683) Mouse Tagged ORF Clone

Product data:

Product Type:	Expression Plasmids
Product Name:	Prrg1 (NM_001289683) Mouse Tagged ORF Clone
Tag:	Myc-DDK
Symbol:	Prrg1
Synonyms:	2010007L08Rik
Mammalian Cell Selection:	Neomycin
Vector:	pCMV6-Entry (PS100001)
E. coli Selection:	Kanamycin (25 ug/mL)
ORF Nucleotide Sequence:	>MR228577 ORF sequence Red=Cloning site Blue=ORF Green=Tags(s)

TTTTGTAATACGACTCACTATAGGGCGGCCGGAATTCGTCGACTGGATCCGGTACCGAGGAGATCTGCC
GCC**CGATCGCC**

ATGGGAAGGGTTTTCTCACGGAAGAAAAAGCCAACCTCAGTACTAAAACGCTACCCAAGAGCCAATGGGC
TTTTTGAAGAAATAGACAGGGCAACATTGAGCGTGAGTGCAGAGAAGAAATCTGTACATATGAAGAAGC
CAGAGAGGCTTTTAAAAATCATGAAAACTAAGGAGTTTGGAGCACCTACACAAAAGCACAACAAGGA
GAAACCAACAGAGGAAGTACTGGTTTCAATTTTATCTTACTTTTCCATTAATCTTTGGCCTCTTCATTA
TTCTCCTTGTCATCTTAAATCTGGAGATGCTTCTAAGAAACAAAACCTCGGAGACAGACAGTACTGA
AAGCCACATTCCTTTCCCTCAGCAACTTAACATCATCACTCCACCTCCTCCACCAGATGAAGTCTTTGAT
AGCAGTGCATTGTCTCCAGGTTTTTGGAAATGTTGTTGGGCGTTCAGATTCGGTTTTCCACTCGCCTTT
CCAACGTGATCCCCACCTACCTATGAGGAAGCCACCGCCAGGTGAACCTGAGAAGGAGTGAACAGA
ACCTCCTTTAGACCCACCACCAAGATAAGGACATAGTCAACTCCAGTTCAGCTAGTGCCATTGCATG
GTGCCTGTGGTCACCACCATCAA

ACGCGTACGCGGCGCTCGAGCAGAACTCATCTCAGAAGAGGATCTGGCAGCAAATGATATCCTGGATT
ACAAGGATGACGACGATAAGGTTTAA



[View online »](#)

Protein Sequence: >MR228577 protein sequence
Red=Cloning site Green=Tags(s)

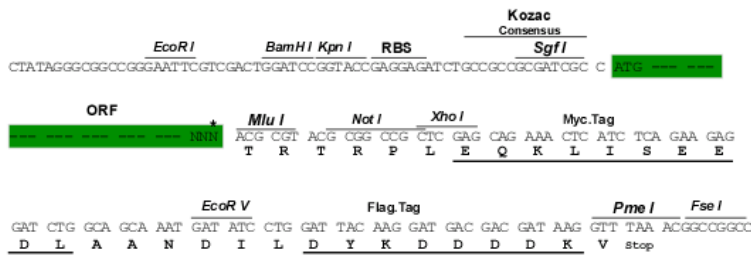
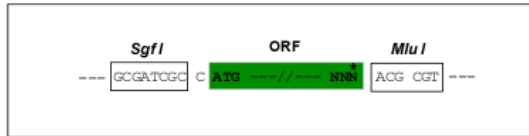
MGRVFLTEEKANSVLKRYPRANGLFEEIRQGNIERECREEICTYEEAREAFENHEKTKEFWSTYTKAQQG
 ETNRGSDWFQFYLTFFPLIFGLFIILLVIFLIWRCFLRNKTRRQTVTESHIPFPQQLNIITPPPPDEVFD
 SSALSPGFLEYVGRSDSVSTRLSNCDPPPTYEEATGQVNLRRSETEPPLDPPPEYEDIVNSSSASAIAM
 VPVVTTIK

TRTRPLEQKLISEEDLAANDILDYKDDDDKV

Restriction Sites: SgfI-MluI

Cloning Scheme:

Cloning sites used for ORF Shuttling:



ACCN: NM_001289683

ORF Size: 654 bp

OTI Disclaimer: The molecular sequence of this clone aligns with the gene accession number as a point of reference only. However, individual transcript sequences of the same gene can differ through naturally occurring variations (e.g. polymorphisms), each with its own valid existence. This clone is substantially in agreement with the reference, but a complete review of all prevailing variants is recommended prior to use. [More info](#)

OTI Annotation: This clone was engineered to express the complete ORF with an expression tag. Expression varies depending on the nature of the gene.

Components: The ORF clone is ion-exchange column purified and shipped in a 2D barcoded Matrix tube containing 10ug of transfection-ready, dried plasmid DNA (reconstitute with 100 ul of water).

Reconstitution Method:

1. Centrifuge at 5,000xg for 5min.
2. Carefully open the tube and add 100ul of sterile water to dissolve the DNA.
3. Close the tube and incubate for 10 minutes at room temperature.
4. Briefly vortex the tube and then do a quick spin (less than 5000xg) to concentrate the liquid at the bottom.
5. Store the suspended plasmid at -20°C. The DNA is stable for at least one year from date of shipping when stored at -20°C.

RefSeq: [NM_001289683.1](#), [NP_001276612.1](#)

RefSeq Size: 3973 bp

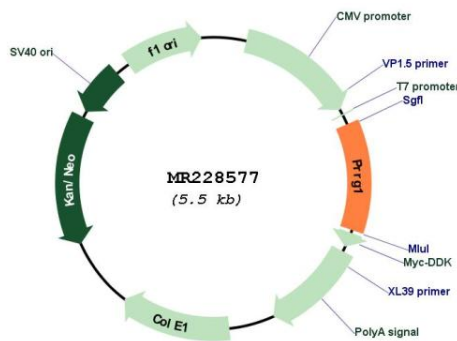
RefSeq ORF: 657 bp

Locus ID: 546336

Cytogenetics: X B

MW: 25.1 kDa

Product images:



Circular map for MR228577