

Product datasheet for **MR228576**

Sdf4 (NM_001302469) Mouse Tagged ORF Clone

Product data:

Product Type: Expression Plasmids
Product Name: Sdf4 (NM_001302469) Mouse Tagged ORF Clone
Tag: Myc-DDK
Symbol: Sdf4
Synonyms: Cab4; Cab45
Vector: pCMV6-Entry (PS100001)
E. coli Selection: Kanamycin (25 ug/mL)
Cell Selection: Neomycin
ORF Nucleotide Sequence: >MR228576 representing NM_001302469
Red=Cloning site Blue=ORF Green=Tags(s)

TTTTGTAATACGACTCACTATAGGGCGCCGGAATTCGTCGACTGGATCCGGTACCGAGGAGATCTGCC
GCC**CGATCGCC**

ATGGTCTGGCTGGTGGCAATGACGCCAGGCAGAGTTCCTCTGTGGTCTAGCTGCTCATGGCCTCTGGT
TCTTGGGCCTTGTCTTCTGATGGATGCAACCGCTAGACCTGCCAACCACTCATCTACTCGGAAAGAGC
GGCTAACAGGGAGGAAAATGAGATCATGCCCCAGACCACCTGAATGGGGTGAAGCTGGAGATGGATGGA
CACCTCAACAAGGACTTCCATCAGGAGTTTTCTGGGAAAGGACATGGATGGGTTTGATGAAGACTCAG
AGCCACGGAGAAGCCGGAGGAAGCTGATGGTCATCTTTCCAAGGTAGACGTGAACACTGACCGGAGGAT
CAGCGCTAAGGAGATGCAGCACTGGATTATGGAGAAAACAGCAGAGCACTTCCAGGAGGCCGTCAAGGAA
AACAACTGCACTTCAGGGCTGTGGACCCTGACGGTGACGGCCATGTTTCTGGGATGAATATAAAGTGA
AGTTTTTGGCAAGCAAAGGCCACAATGAAAGGGAGATTGCTGAAGCCATCAAGAACCATGAGGAGCTCAA
AGTGGATGAGGAGATTGCGCTTCATTTCTGCTGCTTACTGGAGGGCCCTGTCTGTCTCTGGTGAG
ACCAGTATATGCCTGTCCAGTTG

ACGCGTACGCGGCCGCTCGAGCAGAACTCATCTCAGAAGAGGATCTGGCAGCAAATGATATCCTGGATT
ACAAGGATGACGACGATAAGGTTTAA



[View online »](#)

Protein Sequence: >MR228576 representing NM_001302469
 Red=Cloning site Green=Tags(s)

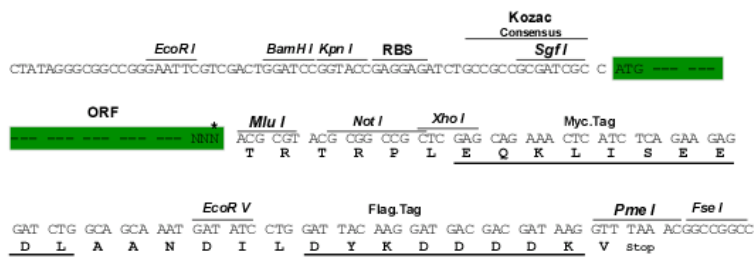
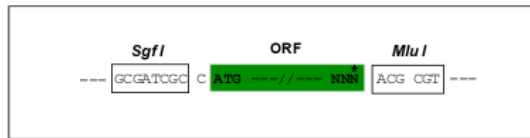
MVWL VAMTPRQSSL CGLAAHGLWFLGLVLLMDATARPANHSSTRERAANREENEIMPPDHLNGVKLEMDG
 HLNKDFHQEVFLGKMDGDFDEDESEPRRSRRKLMVIFSKVDVNTDRRISAKEMQHWIMEKTAEHFQEAVKE
 NKLHFRAVDPDGDGHVSWDEYKVKFLASKGHNREIAEAIKNHEELKVDEEIALHFLLLTGGPLSCSSGE
 TSICLSRL

TRTRPLEQKLISEEDLAANDILDYKDDDDKV

Restriction Sites: Sgfl-MluI

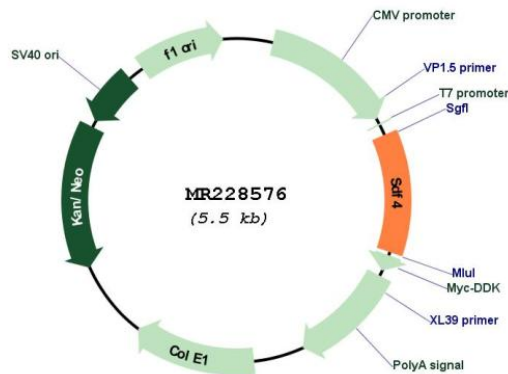
Cloning Scheme:

Cloning sites used for ORF Shuttling:



* The last codon before the Stop codon of the ORF

Plasmid Map:



ACCN: NM_001302469

ORF Size: 654 bp

OTI Disclaimer:	The molecular sequence of this clone aligns with the gene accession number as a point of reference only. However, individual transcript sequences of the same gene can differ through naturally occurring variations (e.g. polymorphisms), each with its own valid existence. This clone is substantially in agreement with the reference, but a complete review of all prevailing variants is recommended prior to use. More info
OTI Annotation:	This clone was engineered to express the complete ORF with an expression tag. Expression varies depending on the nature of the gene.
Components:	The ORF clone is ion-exchange column purified and shipped in a 2D barcoded Matrix tube containing 10ug of transfection-ready, dried plasmid DNA (reconstitute with 100 ul of water).
Reconstitution Method:	<ol style="list-style-type: none">1. Centrifuge at 5,000xg for 5min.2. Carefully open the tube and add 100ul of sterile water to dissolve the DNA.3. Close the tube and incubate for 10 minutes at room temperature.4. Briefly vortex the tube and then do a quick spin (less than 5000xg) to concentrate the liquid at the bottom.5. Store the suspended plasmid at -20°C. The DNA is stable for at least one year from date of shipping when stored at -20°C.
RefSeq:	NM_001302469.1 , NP_001289398.1
RefSeq Size:	990 bp
RefSeq ORF:	657 bp
Locus ID:	20318
UniProt ID:	Q61112
Cytogenetics:	4 E2
MW:	25.3 kDa
Gene Summary:	This gene encodes a member of the CREC family. The encoded protein contains multiple calcium-binding EF-hand motifs. This protein localizes to the Golgi lumen and may be involved in regulating calcium dependent cellular activities. Alternative splicing results in multiple transcript variants. [provided by RefSeq, Oct 2014]