

## Product datasheet for **MR228560**

### **Xlr4b (NM\_001293680) Mouse Tagged ORF Clone**

#### Product data:

Product Type:	Expression Plasmids
Product Name:	Xlr4b (NM_001293680) Mouse Tagged ORF Clone
Tag:	Myc-DDK
Symbol:	Xlr4b
Synonyms:	Xlr4
Mammalian Cell Selection:	Neomycin
Vector:	pCMV6-Entry (PS100001)
E. coli Selection:	Kanamycin (25 ug/mL)
ORF Nucleotide Sequence:	>MR228560 ORF sequence Red=Cloning site Blue=ORF Green=Tags(s)

TTTTGTAATACGACTCACTATAGGGCGGCCGGAATTCGTCGACTGGATCCGGTACCGAGGAGATCTGCCGCC**CGATCGCC**

ATGGCTTCCAAAATCAAGGGCAGACCTCCCAAGCAACCAAGGTGACTCCTGCTGCCATCTAATGATT  
CACAGCAGCTTCATGAAAATAACCCAGGAAACAATCTGGCCCTTGAAACTTGTGGGGAAAGCAGTTCTTC  
CCATGGAACAGGTGGACCAAGCCAGGGCCAGTAAGAAACTCTAAATGAAAGGAAGAGAAAGTATGGG  
GTGAGTGTAAATAAACTGTCCAAAACATTGAGTGGAAATGTTGACCACTTCTGAAAGTCCAGCATGAGC  
GAAGGCAGGAACCTTTATAAGGACTATTCTCATCAGTTTTTGACTTGGTTATGATGTGGAATATAGATGT  
AGACCAAATCAAGAAACAGGCTGAAAACTCTCTGATATACTTGATGAGCAACAGAAGCTTTTTCAACAA  
TTTCAAAGTATTCATATGCAGAAAATAGAAGAATTTAAGGAGTTATGTGATCGCACTTGAAGAATCTAC  
AGGCTATTAAGTGTTCGCCGAAAAGCTATTATTGAGGAAGCCAGAAAGCTAATGGACTACTTGGAAAA  
GAGAGTTACTGAAGAACTGTTACGTAACAAGCAGGAAGCAAAGGATGGTGTTCATCATCACTTCTA  
TCCCTGCTAATCTCG

**ACGCGT**ACGCGGCCGCTCGAGCAGAAACTCATCTCAGAAGAGGATCTGGCAGCAAATGATATCCTGGATT  
ACAAGGATGACGACGATAAGGTTTAA



[View online »](#)

**Protein Sequence:** >MR228560 protein sequence  
 Red=Cloning site Green=Tags(s)

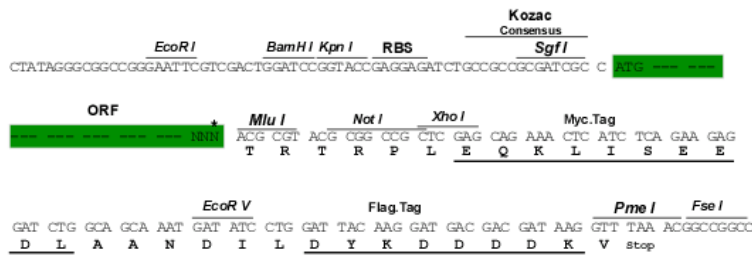
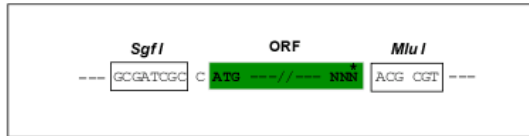
MASKIKGRPPKQPKVTPALPSNDSQQLHENPNGNLALETGESSSSHGTGGPKPGSPKTLNERKRKYG  
 VSVNKTVQNIWVNDHFLKVQHERRQELYKDYSHQFLTLVMMWNIDVDQIKKQAGKLSLILDEQQKLFQQ  
 FQSIHMQKIEEFKELCDRHLKNLQAIKCCRKAIEEARKLMDYLEKRVTEETVHVNKQEAKDGVQSSLL  
 SLLIS

TRTRPLEQKLISEEDLAANDILDYKDDDDKV

**Restriction Sites:** SgfI-MluI

**Cloning Scheme:**

Cloning sites used for ORF Shuttling:



\* The last codon before the Stop codon of the ORF

**ACCN:** NM\_001293680

**ORF Size:** 648 bp

**OTI Disclaimer:** The molecular sequence of this clone aligns with the gene accession number as a point of reference only. However, individual transcript sequences of the same gene can differ through naturally occurring variations (e.g. polymorphisms), each with its own valid existence. This clone is substantially in agreement with the reference, but a complete review of all prevailing variants is recommended prior to use. [More info](#)

**OTI Annotation:** This clone was engineered to express the complete ORF with an expression tag. Expression varies depending on the nature of the gene.

**Components:** The ORF clone is ion-exchange column purified and shipped in a 2D barcoded Matrix tube containing 10ug of transfection-ready, dried plasmid DNA (reconstitute with 100 ul of water).

**Reconstitution Method:**

1. Centrifuge at 5,000xg for 5min.
2. Carefully open the tube and add 100ul of sterile water to dissolve the DNA.
3. Close the tube and incubate for 10 minutes at room temperature.
4. Briefly vortex the tube and then do a quick spin (less than 5000xg) to concentrate the liquid at the bottom.
5. Store the suspended plasmid at -20°C. The DNA is stable for at least one year from date of shipping when stored at -20°C.

**RefSeq:** [NM\\_001293680.1](#), [NP\\_001280609.1](#)

**RefSeq Size:** 1232 bp

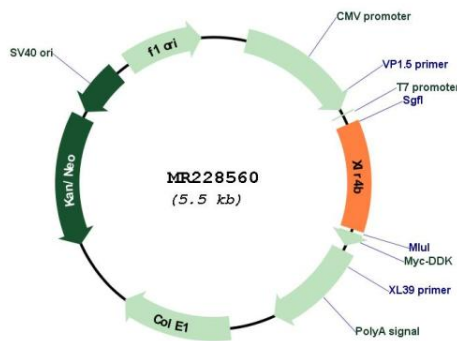
**RefSeq ORF:** 648 bp

**Locus ID:** 27083

**Cytogenetics:** X 37.29 cM

**MW:** 24.8 kDa

**Product images:**



Circular map for MR228560