

## Product datasheet for MR228471

### TPD52I2 (NM\_001291202) Mouse Tagged ORF Clone

#### Product data:

**Product Type:** Expression Plasmids  
**Product Name:** Tpd52I2 (NM\_001291202) Mouse Tagged ORF Clone  
**Tag:** Myc-DDK  
**Symbol:** Tpd52I2  
**Synonyms:** 2810411G23Rik; AU016537; C86069; D54  
**Vector:** pCMV6-Entry (PS100001)  
**E. coli Selection:** Kanamycin (25 ug/mL)  
**Cell Selection:** Neomycin  
**ORF Nucleotide Sequence:** >MR228471 representing NM\_001291202  
 Red=Cloning site Blue=ORF Green=Tags(s)

TTTTGTAATACGACTCACTATAGGGCGGCCGGAATTCGTCGACTGGATCCGGTACCGAGGAGATCTGCC  
 GCCGCGATCGCC

ATGGACTCTGCTAGCCAAGATATCAACCTGAATTCCTCAACAAAGGTGTGCTGTCTGACTTTATGACTG  
 ACGTCCCTGTTGACCCAGGTGTGGTCCACCGACTCCAGTTGTAGAAGGCCTGACAGAGGGGGAGGAAGA  
 AGAGCTTCGGGCTGAGCTTGCTAAGGTGGAAGAAGAAATTGCTACTCTGCCAGGTGCTGCCAGCCAAA  
 GAGAGGCACTGTGGAGAGCTGAAAAGGAGGCTGGGCCTCTCCACATTAGGGGAGCTGAAGCAGAACCTGT  
 CTAGGAGCTGGCATGATGTGCAGGTCTCTACTGCCTACAAGAAGACTCAAGAACTCTTTACAGGCTGG  
 ACAGAAAACATCAGCTGCCCTGTCCACCATGGGCTCTGCCATCAGCAGGAAGCTTGAGACATGAGCAGC  
 TACTCCATCCGCACTCGATAAGTATGCCTGTCATGAGGAACTCAGCCACCTTCAAGTCATTTGAAGACC  
 GAGTGGGGACCATAAAGTCTAAGGTTGTGGGTGGCAGAGAGAATGGCAGCGATAACCTCCCTCCCTCTCC  
 TGGAAGTGGTGACCAGACATTGCCGGATCATGCGCCTTTC

ACGCGTACGCGGCCGCTCGAGCAGAACTCATCTCAGAAGAGGATCTGGCAGCAAATGATATCCTGGATT  
 ACAAGGATGACGACGATAAGGTTTAA

**Protein Sequence:** >MR228471 representing NM\_001291202  
 Red=Cloning site Green=Tags(s)

MDSASQDINLNSPNKGVLSDFMTDVPVDPGVVHRTVPVVEGLTEGEEEEELRAELAKVEEEEIVTLRQVLA  
 AK ERHCGELKRRLLGLSTLGELKQNLRSWHDVQVSTAYKKTQETLSQAGQKTSAAALSTMGSAISRKLGMSS  
 YSIRHSISMPVMRNSATFKSFEDRVGTIKSKVVGRENGSDNLPPSPGSGDQTLPDHAPF

TRTRPLEQKLISEEDLAANDILDYKDDDDKV

**Restriction Sites:** SgfI-MluI

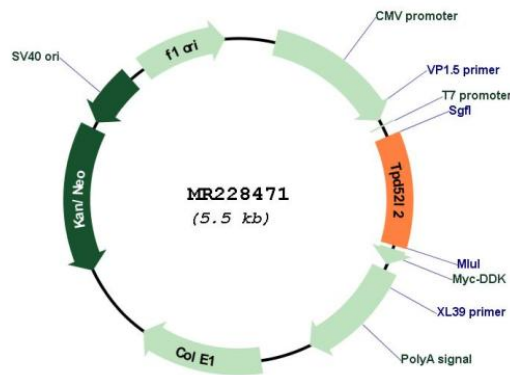


[View online »](#)

**Cloning Scheme:**



**Plasmid Map:**



**ACCN:** NM\_001291202

**ORF Size:** 600 bp

**OTI Disclaimer:** The molecular sequence of this clone aligns with the gene accession number as a point of reference only. However, individual transcript sequences of the same gene can differ through naturally occurring variations (e.g. polymorphisms), each with its own valid existence. This clone is substantially in agreement with the reference, but a complete review of all prevailing variants is recommended prior to use. [More info](#)

**OTI Annotation:** This clone was engineered to express the complete ORF with an expression tag. Expression varies depending on the nature of the gene.

**Components:** The ORF clone is ion-exchange column purified and shipped in a 2D barcoded Matrix tube containing 10ug of transfection-ready, dried plasmid DNA (reconstitute with 100 ul of water).

**Reconstitution Method:**

1. Centrifuge at 5,000xg for 5min.
2. Carefully open the tube and add 100ul of sterile water to dissolve the DNA.
3. Close the tube and incubate for 10 minutes at room temperature.
4. Briefly vortex the tube and then do a quick spin (less than 5000xg) to concentrate the liquid at the bottom.
5. Store the suspended plasmid at -20°C. The DNA is stable for at least one year from date of shipping when stored at -20°C.

**RefSeq:** [NM\\_001291202.1](#), [NP\\_001278131.1](#)

**RefSeq Size:** 3562 bp

**RefSeq ORF:** 603 bp

**Locus ID:** 66314

**Cytogenetics:** 2 H4

**MW:** 22.2 kDa