

Product datasheet for MR228188

Dbnnd2 (NM_001048228) Mouse Tagged ORF Clone

Product data:

Product Type: Expression Plasmids
Product Name: Dbnnd2 (NM_001048228) Mouse Tagged ORF Clone
Tag: Myc-DDK
Symbol: Dbnnd2
Synonyms: 1110017A21Rik; 2900022J10Rik; AU041050; AW048677; D2Bwg0891e; Nkip; R74724
Mammalian Cell Selection: Neomycin
Vector: pCMV6-Entry (PS100001)
E. coli Selection: Kanamycin (25 ug/mL)
ORF Nucleotide Sequence: >MR228188 representing NM_001048228
Red=Cloning site Blue=ORF Green=Tags(s)

TTTTGTAATACGACTCACTATAGGGCGGCCGGAATTCGTCGACTGGATCCGGTACCGAGGAGATCTGCC
GCC**CGATCGC**C

ATGGACCCAAATCCTCGAGCAGCCCTGGAGCGCCAACAGCTCGGGCTCCGGGAGAGGCAGAAGTTCTTTG
AGGACATTTTACAGCCAGAGACAGAGTTTGTCTTCCCCGTCCCATCTGCACCTGGAGTCACAAAGACC
CCCCATAGGTAGCATCTCGTCTATGGAAGTGAATGTGGACACACTGGAGCAAGTGGAGTTTATTGATCTT
GCGGATCAGGATGGAGCAGATGTGTTCTTGCCCTGTGAGGAGTCCCTGCCAGCTCCCAGATGTCTGGAG
TGGATGACCATCCAGAGGAGCTGAGCCTGCTGGTACCCACGTCTGACAGGACCACATCCCGACCTCCTC
CTTGCTCTGACTCCTCAACCTGCGCAGTCCAAATCCAAGTATGGGGGAGGAGACACTCCCTTGCCA
CAGTCTGATGAGGAGGACGGGGATGACGGAGGGGCAGAGCCTGGACCCTGCAGC

ACGCGTACGCGGCCGCTCGAGCAGAACTCATCTCAGAAGAGGATCTGGCAGCAAATGATATCCTGGATT
ACAAGGATGACGACGATAAGGTTTAA

Protein Sequence: >MR228188 representing NM_001048228
Red=Cloning site Green=Tags(s)

MDPNPRAALERQQLRLRERQKFFEDILQPETEFVPLSHLHLESQRPPIGSISSEMEVNDTLEQVEFIDL
ADQDGADVFLPCEESSPAPQMSGVDDHPEELSLLVPTSDRTTSRTSSLSDDSSNLRSPNPSDGGGDTPLA
QSDEEDGDDGGAEPGPCS

TRTRPLEQKLISEEDLAANDILDYKDDDDKV

Restriction Sites: SgfI-MluI



Cloning Scheme:


ACCN: NM_001048228

ORF Size: 474 bp

OTI Disclaimer: The molecular sequence of this clone aligns with the gene accession number as a point of reference only. However, individual transcript sequences of the same gene can differ through naturally occurring variations (e.g. polymorphisms), each with its own valid existence. This clone is substantially in agreement with the reference, but a complete review of all prevailing variants is recommended prior to use. [More info](#)

OTI Annotation: This clone was engineered to express the complete ORF with an expression tag. Expression varies depending on the nature of the gene.

Components: The ORF clone is ion-exchange column purified and shipped in a 2D barcoded Matrix tube containing 10ug of transfection-ready, dried plasmid DNA (reconstitute with 100 ul of water).

- Reconstitution Method:**
1. Centrifuge at 5,000xg for 5min.
 2. Carefully open the tube and add 100ul of sterile water to dissolve the DNA.
 3. Close the tube and incubate for 10 minutes at room temperature.
 4. Briefly vortex the tube and then do a quick spin (less than 5000xg) to concentrate the liquid at the bottom.
 5. Store the suspended plasmid at -20°C. The DNA is stable for at least one year from date of shipping when stored at -20°C.

RefSeq: [NM_001048228.1](#), [NP_001041693.1](#)

RefSeq Size: 3601 bp

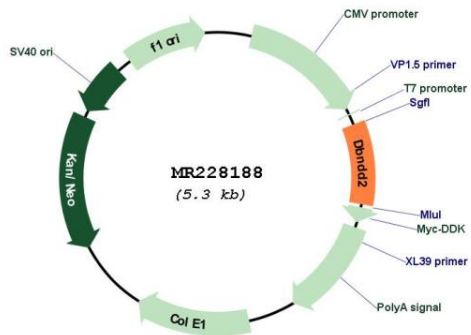
RefSeq ORF: 477 bp

Locus ID: 52840

UniProt ID: [Q9CRD4](#)

Cytogenetics: 2 85.17 cM
MW: 17.2 kDa
Gene Summary: May modulate the activity of casein kinase-1. Inhibits CSNK1D autophosphorylation (in vitro) (By similarity).[UniProtKB/Swiss-Prot Function]

Product images:



Circular map for MR228188