

Product datasheet for MR228176

Tph1 (NM_001276372) Mouse Tagged ORF Clone

Product data:

Product Type: Expression Plasmids
Product Name: Tph1 (NM_001276372) Mouse Tagged ORF Clone
Tag: Myc-DDK
Symbol: Tph1
Synonyms: Tph
Mammalian Cell Selection: Neomycin
Vector: pCMV6-Entry (PS100001)
E. coli Selection: Kanamycin (25 ug/mL)
ORF Nucleotide Sequence: >MR228176 representing NM_001276372
Red=Cloning site Blue=ORF Green=Tags(s)

TTTTGTAATACGACTCACTATAGGGCGCCGGGAATTCGTCGACTGGATCCGGTACCGAGGAGATCTGCC
GCC**CGATCGCC**

ATGATTGAAGACAACAAGGAGAACAAGAGAACAAGACCATTCTCCGAAAGAGGGAGAGTGACTCTCA
TCTTCTCCTTGGAGAATGAAGTCGGAGGACTCATAAAAGTGCTGAAAATCTCCAGGAGAATCATGTGAG
CCTGTTACACATCGAGTCCCGAAATCAAAGCAAAGAAATTCAGAATTTGAGATATTTGTTGACTGCGAC
ATCAGCCGAGAACAGTTGAATGACATCTCCCCCTGCTGAAGTCGCACGCCACCGTCCTCTCGGTGGACT
CGCCCGATCAGCTCACTGCGAAGGAAGACGTTATGGAGACTGTCCCTTGGTTTCCAAAGAAGATTTCTGA
CCTGGACTTCTGCGCAACAGAGTGCTGTTGTATGGATCCGAACCTGACGCCGACCACCTGTAATATG
TTTACAAAGTCACGCAGTGCGAATAACTTAAGTCAAACCTGAAGAT

ACGCGTACGCGGCCGCTCGAGCAGAACTCATCTCAGAAGAGGATCTGGCAGCAAATGATATCCTGGATT
ACAAGGATGACGACGATAAGGTTTAA

Protein Sequence: >MR228176 representing NM_001276372
Red=Cloning site Green=Tags(s)

MIEDNKENKENDHSSERGRVTLIFSLENEVGGLIKVLKIFQENHVSLLLHIESRKSQRNSEFEIFVDCD
ISREQLNDFPLKSHATVLSVDSPDQLTAKEDVMETVPWPKKISDLDFCANRVLLYGSELDADHPVMN
FTKRSANNLSTED

TRTRPLEQKLISEEDLAANDILDYKDDDDKV

Restriction Sites: SgfI-MluI



[View online »](#)

Cloning Scheme:



ACCN: NM_001276372

ORF Size: 465 bp

OTI Disclaimer: Due to the inherent nature of this plasmid, standard methods to replicate additional amounts of DNA in E. coli are highly likely to result in mutations and/or rearrangements. Therefore, OriGene does not guarantee the capability to replicate this plasmid DNA. Additional amounts of DNA can be purchased from OriGene with batch-specific, full-sequence verification at a reduced cost. Please contact our customer care team at custsupport@origene.com or by calling 301.340.3188 option 3 for pricing and delivery.

The molecular sequence of this clone aligns with the gene accession number as a point of reference only. However, individual transcript sequences of the same gene can differ through naturally occurring variations (e.g. polymorphisms), each with its own valid existence. This clone is substantially in agreement with the reference, but a complete review of all prevailing variants is recommended prior to use. [More info](#)

OTI Annotation: This clone was engineered to express the complete ORF with an expression tag. Expression varies depending on the nature of the gene.

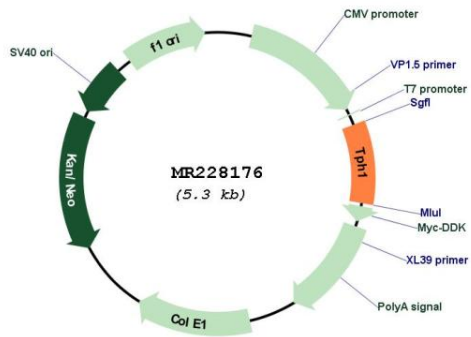
Components: The ORF clone is ion-exchange column purified and shipped in a 2D barcoded Matrix tube containing 10ug of transfection-ready, dried plasmid DNA (reconstitute with 100 ul of water).

- Reconstitution Method:
1. Centrifuge at 5,000xg for 5min.
 2. Carefully open the tube and add 100ul of sterile water to dissolve the DNA.
 3. Close the tube and incubate for 10 minutes at room temperature.
 4. Briefly vortex the tube and then do a quick spin (less than 5000xg) to concentrate the liquid at the bottom.
 5. Store the suspended plasmid at -20°C. The DNA is stable for at least one year from date of shipping when stored at -20°C.

RefSeq: NM_001276372.1, NP_001263301.1
RefSeq Size: 628 bp
RefSeq ORF: 468 bp
Locus ID: 21990
Cytogenetics: 7 30.43 cM
MW: 18.2 kDa

Gene Summary: This gene encodes a member of the bipterin-dependent aromatic amino acid hydroxylase family. The encoded protein is one of two tryptophan hydroxylase enzymes that catalyze the first and rate limiting step in the biosynthesis of the hormone and neurotransmitter, serotonin. This gene is expressed in peripheral organs, while tryptophan hydroxylase 2 is expressed in neurons. The encoded protein is involved in the development of hypoxia-induced elevations in pulmonary pressures and pulmonary vascular remodeling, and has also been implicated as a regulator of immune tolerance. Disruption of this gene is associated with cardiac dysfunction. Alternative splicing results in multiple transcript variants. [provided by RefSeq, Feb 2013]

Product images:



Circular map for MR228176