

Product datasheet for MR228090

Rph3al (NM_001291159) Mouse Tagged ORF Clone

Product data:

Product Type: Expression Plasmids
Product Name: Rph3al (NM_001291159) Mouse Tagged ORF Clone
Tag: Myc-DDK
Symbol: Rph3al
Synonyms: Gm1753; Noc2
Mammalian Cell Selection: Neomycin
Vector: pCMV6-Entry (PS100001)
E. coli Selection: Kanamycin (25 ug/mL)
ORF Nucleotide Sequence: >MR228090 representing NM_001291159
Red=Cloning site Blue=ORF Green=Tags(s)

TTTTGTAATACGACTCACTATAGGGCGGCCGGAATTCGTCGACTGGATCCGGTACCGAGGAGATCTGCC
GCC**CGATCGCC**

ATGGCTGACACCATCTTCAGCAGTGAAATGATCAGTGGGTTTGCCCAACGATCGGCAGCTTGCTCTGA
GAGCCAAGCTGCAGACGGGCTGGTCTGTGCACACGTACCAGACGGAGAAGCAGAGGAGGACCGATGCCT
GAGCCCCGGAGAGCTGGAGATCATCCTTCAGGTATCCAGAGAGCAGAGAGGCTAGACATCCTGGAGCAG
CAGAGAATTGGGCGGCTGGTGGAGCGGCTGGAGACAATGCAGAGGAACGTGATGGGCAACGGTCTCTCCC
AGTGTCTGCTCTGCGGGAGGTGCTGGGATTCCTGGGCAGCTCCTCCGTATTCTGCAAAGACTGCAGGAA
GCTTGGGATCCGCTGGCTGCAGCACTTCCTAGAAAGCCTGCTGATTCTGAACAGAGATCTCACGTGCTCC
TTG

ACGCGTACGCGGCCGCTCGAGCAGAACTCATCTCAGAAGAGGATCTGGCAGCAAATGATATCCTGGATT
ACAAGGATGACGACGATAAGGTTTAA

Protein Sequence: >MR228090 representing NM_001291159
Red=Cloning site Green=Tags(s)

MADTIFSSGNDQWVCPNDRQLALRAKLQTGWSVHTYQTEKQRRSQCLSPGELEIILQVIQRAERLDILEQ
QRIGRLVERLETMQRNVMGNLSQCLLCGEVLGFLGSSSVFCKDCRKLGIKRWLQHFLESLILINRDLTCS
L

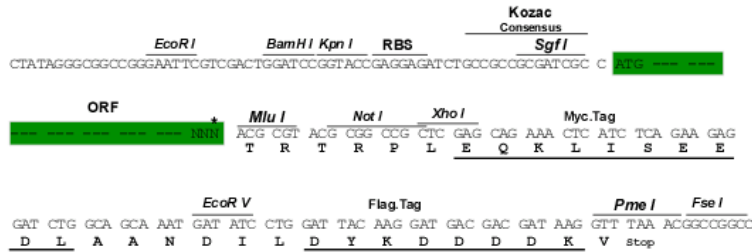
TRTRPLEQKLISEEDLAANDILDYKDDDDKV

Restriction Sites: SgfI-MluI



Cloning Scheme:

Cloning sites used for ORF Shuttling:



* The last codon before the Stop codon of the ORF

ACCN: NM_001291159

ORF Size: 423 bp

OTI Disclaimer: The molecular sequence of this clone aligns with the gene accession number as a point of reference only. However, individual transcript sequences of the same gene can differ through naturally occurring variations (e.g. polymorphisms), each with its own valid existence. This clone is substantially in agreement with the reference, but a complete review of all prevailing variants is recommended prior to use. [More info](#)
OTI Annotation: This clone was engineered to express the complete ORF with an expression tag. Expression varies depending on the nature of the gene.

Components: The ORF clone is ion-exchange column purified and shipped in a 2D barcoded Matrix tube containing 10ug of transfection-ready, dried plasmid DNA (reconstitute with 100 ul of water).

Reconstitution Method:

1. Centrifuge at 5,000xg for 5min.
2. Carefully open the tube and add 100ul of sterile water to dissolve the DNA.
3. Close the tube and incubate for 10 minutes at room temperature.
4. Briefly vortex the tube and then do a quick spin (less than 5000xg) to concentrate the liquid at the bottom.
5. Store the suspended plasmid at -20°C. The DNA is stable for at least one year from date of shipping when stored at -20°C.

RefSeq: [NM_001291159.1](#), [NP_001278088.1](#)
RefSeq Size: 1708 bp

RefSeq ORF: 426 bp

Locus ID: 380714

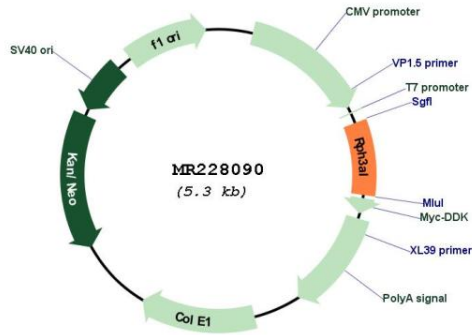
UniProt ID: [Q768S4](#)

Cytogenetics: 11 B5

MW: 16.6 kDa

Gene Summary: Rab GTPase effector involved in the late steps of regulated exocytosis, both in endocrine and exocrine cells. Regulates the exocytosis of dense-core vesicles in neuroendocrine cells through interaction with RAB27A. Acts as a potential RAB3B effector protein in epithelial cells. [UniProtKB/Swiss-Prot Function]

Product images:



Circular map for MR228090