

## Product datasheet for MR227684L4

### Ptgs2 (NM\_011198) Mouse Tagged Lenti ORF Clone

#### Product data:

Product Type:	Expression Plasmids
Product Name:	Ptgs2 (NM_011198) Mouse Tagged Lenti ORF Clone
Tag:	mGFP
Symbol:	Ptgs2
Synonyms:	COX; Cox-; Cox-2; COX2; gripghs; PES-2; Pgh; PGHS; PGHS-2; Pghs2; PHS; PHS-2; PHS II; Tis; TIS10
Mammalian Cell Selection:	Puromycin
Vector:	pLenti-C-mGFP-P2A-Puro (PS100093)
E. coli Selection:	Chloramphenicol (34 ug/mL)
ORF Nucleotide Sequence:	The ORF insert of this clone is exactly the same as(MR227684).
Restriction Sites:	SgfI-MluI
Cloning Scheme:	

Cloning sites used for ORF Shuttling:



\* The last codon before the Stop codon of the ORF.

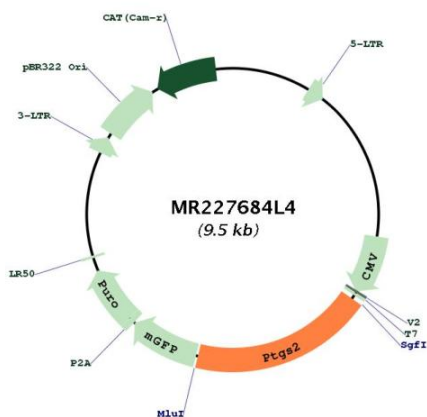
ACCN:	NM_011198
ORF Size:	1812 bp



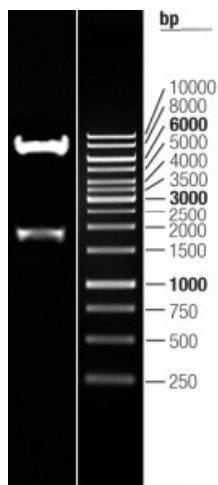
[View online »](#)

<b>OTI Disclaimer:</b>	<p>Due to the inherent nature of this plasmid, standard methods to replicate additional amounts of DNA in E. coli are highly likely to result in mutations and/or rearrangements. Therefore, OriGene does not guarantee the capability to replicate this plasmid DNA. Additional amounts of DNA can be purchased from OriGene with batch-specific, full-sequence verification at a reduced cost. Please contact our customer care team at <a href="mailto:custsupport@origene.com">custsupport@origene.com</a> or by calling 301.340.3188 option 3 for pricing and delivery.</p> <p>The molecular sequence of this clone aligns with the gene accession number as a point of reference only. However, individual transcript sequences of the same gene can differ through naturally occurring variations (e.g. polymorphisms), each with its own valid existence. This clone is substantially in agreement with the reference, but a complete review of all prevailing variants is recommended prior to use. <a href="#">More info</a></p>
<b>OTI Annotation:</b>	<p>This clone was engineered to express the complete ORF with an expression tag. Expression varies depending on the nature of the gene.</p>
<b>Components:</b>	<p>The ORF clone is ion-exchange column purified and shipped in a 2D barcoded Matrix tube containing 10ug of transfection-ready, dried plasmid DNA (reconstitute with 100 ul of water).</p>
<b>Reconstitution Method:</b>	<ol style="list-style-type: none"> <li>1. Centrifuge at 5,000xg for 5min.</li> <li>2. Carefully open the tube and add 100ul of sterile water to dissolve the DNA.</li> <li>3. Close the tube and incubate for 10 minutes at room temperature.</li> <li>4. Briefly vortex the tube and then do a quick spin (less than 5000xg) to concentrate the liquid at the bottom.</li> <li>5. Store the suspended plasmid at -20°C. The DNA is stable for at least one year from date of shipping when stored at -20°C.</li> </ol>
<b>RefSeq:</b>	<p><a href="#">NM_011198.3</a></p>
<b>RefSeq Size:</b>	<p>4150 bp</p>
<b>RefSeq ORF:</b>	<p>1815 bp</p>
<b>Locus ID:</b>	<p>19225</p>
<b>UniProt ID:</b>	<p><a href="#">Q05769</a></p>
<b>Cytogenetics:</b>	<p>1 63.84 cM</p>
<b>Gene Summary:</b>	<p>This gene encodes an enzyme that is a member of the prostaglandin G/H synthase family. The encoded protein converts arachidonic acid to prostaglandin endoperoxide H2 which is a key enzymatic step in prostaglandin biosynthesis. This gene is the inducible prostaglandin G/H synthase family member that is upregulated during inflammation. Aberrant regulation of this gene is associated with cancer progression in several tissues and an increased risk of cardiovascular events. This gene is the target of many non-steroidal anti-inflammatory drugs. [provided by RefSeq, Sep 2015]</p>

Product images:



Circular map for MR227684L4



Double digestion of MR227684L4 using SgfI and MluI