

## Product datasheet for MR227682L4

### II17a (NM\_010552) Mouse Tagged Lenti ORF Clone

#### Product data:

Product Type:	Expression Plasmids
Product Name:	II17a (NM_010552) Mouse Tagged Lenti ORF Clone
Tag:	mGFP
Symbol:	II17a
Synonyms:	Ctl; Ctl <sub>a</sub> ; Ctl <sub>a</sub> -8; Ctl <sub>a</sub> 8; II; IL-; IL-17; IL-17A; II17
Mammalian Cell Selection:	Puromycin
Vector:	pLenti-C-mGFP-P2A-Puro (PS100093)
E. coli Selection:	Chloramphenicol (34 ug/mL)
ORF Nucleotide Sequence:	The ORF insert of this clone is exactly the same as(MR227682).
Restriction Sites:	SgfI-MluI
Cloning Scheme:	

Cloning sites used for ORF Shuttling:



\* The last codon before the Stop codon of the ORF.

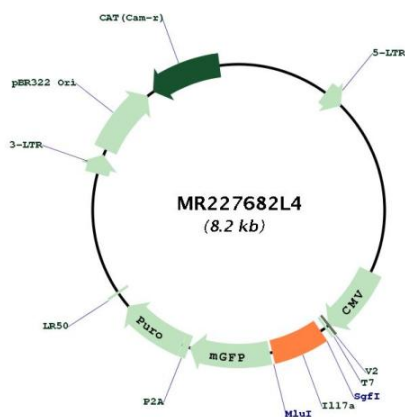
ACCN:	NM_010552
ORF Size:	477 bp



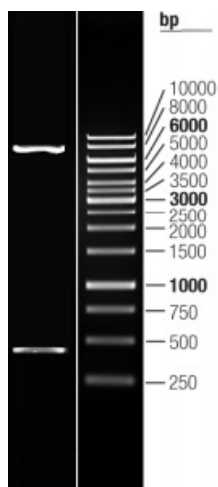
[View online »](#)

<b>OTI Disclaimer:</b>	The molecular sequence of this clone aligns with the gene accession number as a point of reference only. However, individual transcript sequences of the same gene can differ through naturally occurring variations (e.g. polymorphisms), each with its own valid existence. This clone is substantially in agreement with the reference, but a complete review of all prevailing variants is recommended prior to use. <a href="#">More info</a>
<b>OTI Annotation:</b>	This clone was engineered to express the complete ORF with an expression tag. Expression varies depending on the nature of the gene.
<b>Components:</b>	The ORF clone is ion-exchange column purified and shipped in a 2D barcoded Matrix tube containing 10ug of transfection-ready, dried plasmid DNA (reconstitute with 100 ul of water).
<b>Reconstitution Method:</b>	<ol style="list-style-type: none"><li>1. Centrifuge at 5,000xg for 5min.</li><li>2. Carefully open the tube and add 100ul of sterile water to dissolve the DNA.</li><li>3. Close the tube and incubate for 10 minutes at room temperature.</li><li>4. Briefly vortex the tube and then do a quick spin (less than 5000xg) to concentrate the liquid at the bottom.</li><li>5. Store the suspended plasmid at -20°C. The DNA is stable for at least one year from date of shipping when stored at -20°C.</li></ol>
<b>RefSeq:</b>	<a href="#">NM_010552.3</a> , <a href="#">NP_034682.1</a>
<b>RefSeq Size:</b>	1171 bp
<b>RefSeq ORF:</b>	477 bp
<b>Locus ID:</b>	16171
<b>UniProt ID:</b>	<a href="#">Q62386</a>
<b>Cytogenetics:</b>	1 A4
<b>Gene Summary:</b>	This gene encodes a pro-inflammatory cytokine that is a member of the interleukin-17 family. The encoded protein plays a central role in host defense against diverse pathogens. The encoded protein is produced by activated T-cells and certain cell types of innate immune system. The active protein functions as either a homodimer with other interleukin-17 family members and signals through the interleukin-17 receptor to induce inflammatory cytokine production. Aberrant expression of this gene is associated with autoinflammatory diseases including rheumatoid arthritis, psoriasis and multiple sclerosis. [provided by RefSeq, Sep 2015]

Product images:



Circular map for MR227682L4



Double digestion of MR227682L4 using SgfI and MluI