

Product datasheet for MR227678L4

Fcgr2b (NM_001077189) Mouse Tagged Lenti ORF Clone

Product data:

Product Type:	Expression Plasmids
Product Name:	Fcgr2b (NM_001077189) Mouse Tagged Lenti ORF Clone
Tag:	mGFP
Symbol:	Fcgr2b
Synonyms:	AI528646; CD32; F630109E10Rik; Fcgr2; Fcgr2a; FcgRII; Fcr-2; Fcr-3; fcRII; Fc[g]RII; Ly-17
Mammalian Cell Selection:	Puromycin
Vector:	pLenti-C-mGFP-P2A-Puro (PS100093)
E. coli Selection:	Chloramphenicol (34 ug/mL)
ORF Nucleotide Sequence:	The ORF insert of this clone is exactly the same as(MR227678).
Restriction Sites:	SgfI-MluI
Cloning Scheme:	

Cloning sites used for ORF Shuttling:



* The last codon before the Stop codon of the ORF.

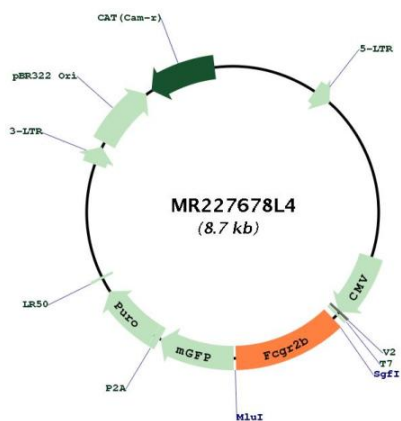
ACCN:	NM_001077189
ORF Size:	1020 bp



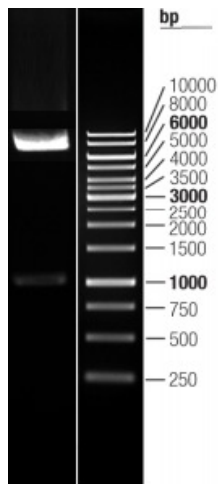
[View online »](#)

OTI Disclaimer:	The molecular sequence of this clone aligns with the gene accession number as a point of reference only. However, individual transcript sequences of the same gene can differ through naturally occurring variations (e.g. polymorphisms), each with its own valid existence. This clone is substantially in agreement with the reference, but a complete review of all prevailing variants is recommended prior to use. More info
OTI Annotation:	This clone was engineered to express the complete ORF with an expression tag. Expression varies depending on the nature of the gene.
Components:	The ORF clone is ion-exchange column purified and shipped in a 2D barcoded Matrix tube containing 10ug of transfection-ready, dried plasmid DNA (reconstitute with 100 ul of water).
Reconstitution Method:	<ol style="list-style-type: none"> 1. Centrifuge at 5,000xg for 5min. 2. Carefully open the tube and add 100ul of sterile water to dissolve the DNA. 3. Close the tube and incubate for 10 minutes at room temperature. 4. Briefly vortex the tube and then do a quick spin (less than 5000xg) to concentrate the liquid at the bottom. 5. Store the suspended plasmid at -20°C. The DNA is stable for at least one year from date of shipping when stored at -20°C.
RefSeq:	NM_001077189.1 , NP_001070657.1
RefSeq Size:	1556 bp
RefSeq ORF:	1023 bp
Locus ID:	14130
Cytogenetics:	1 78.02 cM
Gene Summary:	Receptor for the Fc region of complexed immunoglobulins gamma. Low affinity receptor. Involved in a variety of effector and regulatory functions such as phagocytosis of antigen-antibody complexes from the circulation and modulation of antibody production by B-cells. Isoform IIB1 and isoform IIB1' form caps but fail to mediate endocytosis or phagocytosis. Isoform IIB2 can mediate the endocytosis of soluble immune complexes via clathrin-coated pits. Isoform IIB1 and isoform IIB2 can down-regulate B-cell, T-cell, and mast cell activation when coaggregated to B-cell receptors for AG (BCR), T-cell receptors for AG (TCR), and Fc receptors, respectively.[UniProtKB/Swiss-Prot Function]

Product images:



Circular map for MR227678L4



Double digestion of MR227678L4 using SgfI and MluI