

Product datasheet for **MR227592**

IL23r (NM_144548) Mouse Tagged ORF Clone

Product data:

Product Type:	Expression Plasmids
Product Name:	IL23r (NM_144548) Mouse Tagged ORF Clone
Tag:	Myc-DDK
Symbol:	IL23r
Synonyms:	IL-23R
Mammalian Cell Selection:	Neomycin
Vector:	pCMV6-Entry (PS100001)
E. coli Selection:	Kanamycin (25 ug/mL)



[View online »](#)

ORF Nucleotide
Sequence:

>MR227592 representing NM_144548
Red=Cloning site Blue=ORF Green=Tags(s)

TTTTGTAATACGACTCACTATAGGGCGGCCGGAATTCGTCGACTGGATCCGGTACCGAGGAGATCTGCC
GCCCGCATCGCC

ATGAAAAGAGAGAGAAAATGAGAGGCTTCTACTACATTTGGACATGAGTCACCTCACACTTCAGCTGC
ATGTGGTGATAGCCCTTTATGTGCTCTTCAGATGGTGTCACGGAGGAATCACAAGTATAAACTGCTCTGG
TGACATGTGGTTGAGCCTGGTGAATTTTTAGATGGGCATGAATGTTTCTATATATTGCCAAGAAGCC
CTTAAGCACTGCCGACCAAGGAATCTTTACTTTTATAAAAATGGCTTCAAAGAAGAATTTGATATCACAA
GGATTAATAGAACAACAGCTCGGATTTGGTATAAAGGCTTTTCGGAACCTCATGCCTATATGCATTGCAC
TGCTGAATGTCTGGTCAATTTCAAGAGACTGATTTGTGGAAAGACATTTCTCTGGACATCCACCG
GATGCCCCAGCAATCTGACATGTGTCAATTTAATAACTCAGGCAACATGACATGCACCTGGAACACTG
GGAAGCCTACCTACATAGATACCAAGTATATTGTGCATGTGAAGAGTTTGGAGACAGAAGAACAACA
ATATCTTGCTCAAGCTATGTTAAGATCTCCACTGACTCACTGCAAGGCAGCAGGAAGTATTTGGTATGG
GTCCAAGCTGTCAATTCCTAGGCATGGAGAACTCACAACAACACTACACGTCCATCTGGATGATATAGTGA
TACCTTCTGCGTCCATCATTTCCAGGGCTGAGACTACAAAACGATACTGTACCCAAGACCATAGTTTACTG
GAAAAGCAAACTATGATTGAGAAAATTTCTGTGAGATGAGATACAAAACAACAACAACCAACGTTGG
AGTGTTAAGAATTTGACGCCAATTTACATATGTACAGCAGTCAGAATTCTACCTGGAGCCAGACAGCA
AGTATGATTTCAAGTGCATGTCAAGAACTGGTAAAAGAACTGGCAGCCTTGGAGTTCCCTTTGTCCACAACT
CCACAACTTCCAAGAACTGGTAAAAGAACTGGCAGCCTTGGAGTTCCCTTTGTCCACAACT
TCCAGACAGTTTCCAGGTTACAGCAAACTCATCCACGAACCTCAGAAGATGGAGATGCTCAGTGCTA
CAATCTTCAGAGGACATCCTGCTTCAGGTAATCATCAAGACATTGGACTTTGTGCGGAATGGTCTTCTT
GGCCATCATGTTGCCGATTTTTCTCTGATTGGGATATTTAACAGATCACTTCGAATAGGAATTAAGA
AAAGTTTTACTGATGATCCCAAAGTGGCTTTATGAAGATATTCCTAATATGGAAAATAGCAATGTTGCAA
AATTATTACAGGAAAAAGTGTATTTGAGAATGATAATGCCAGTGAGCAGGCCCTGTATGTGGATCCTGT
CCTTACAGAGATAAGTGAATCTCTCCCTGGAACACAAACCCACAGATTACAAAGAAGAAAGGCTCACA
GGACTCCTTGAGACAAGAGACTGTCTCTAGGAATGTTGTCTACCAGTCTTCTGTTGTGTATATCCTG
ACCTCAACTGGATACAAACCCAGGTTTCAAATGTTCTCTGGAGGAAACCTTTTCATTAACAGAGA
TAAAAGAGACCCTACATCCCTTGAGACCACAGATGACCACTTTGCCAGATTGAAAACATATCCCACTTC
CAATTTCTGCTTCAAGTATGGCTTTACTAAACAAAACACTAATCTTGATGAATTTGTGCCTCGTTTTAA
ATCAAGGAGAATTCATTTCTTCTGACATAAAAACTCAAGACAGGAGAAACCAGCATCGTTTTGCAAAG
TGACTACCCAGTGAACTATCCAGCGCAGACTCTGTTGTCTGATGAATTTGTCTCCTGTTTGGCAATT
GGGAATGAAGACTTGCCATCTATTAATTCTTACTTTCCACAGAACGTTTTGGAAAGCCATTTTCAGTAGAA
TTTCACTCTTCCAAAAG

ACGCGTACGCGGCCGCTCGAGCAGAACTCATCTCAGAAGAGGATCTGGCAGCAATGATATCCTGGATT
ACAAGGATGACGACGATAAGGTTTAA

Protein Sequence: >MR227592 representing NM_144548
 Red=Cloning site Green=Tags(s)

MKREREMRGFYIWDMSHLTLQLHVVIALLYVLFWRCHGGITSINCSGDMWVEPGEIFQMGMNVSICYQEA
 LKHCRPRNLYFYKNGFKEEFDITRINRTARIWYKGFSEPHAYMHCTAECPGHFQETLICGKDISSGHP
 DAPSNLTCVIYEYSGNMTCTWNTGKPTYIDTKYIVHVKSLETEEEQQYLASSYVKISTDSLQGSRYLWV
 VQAVNSLGMENSQQLHVHLDDIVIPSASIIIRAETTNDTPKTIYVWKSMTIEKVFCEMRYKTTTNQWT
 SVKEFDANFTYVQQSEFYLEPDSKYVFQVRCQETGKRNPWPSSPFVHQT SQETGKRNPWPSSPFVHQT
 SQTVSQVTAKSSHEPQKMEMLSATIFRGHPASGNHQDIGLLSGMVFLAIMLPIFSLIGIFNRSRIGIKR
 KYLLMIPKWLIEDIPNMENSNVAKLLQEKSVEFNDAEQALYVDPVLTEISEISPLEHKPTDYKEERLT
 GLETRDCPLGMLSTSSSVVYIPDLNTGYKQVSNVPPGGNLFINRDERDPTSLETTDDHFARLKTYPNF
 QFSASSMALLNKTLILDELCLVLNQGEFNSLDIKNSRQEETSIVLQSDSPSETIPAQTLLSDEFVSLAI
 GNEDLPSINSYFPQNVLESHFSRISLRFQK

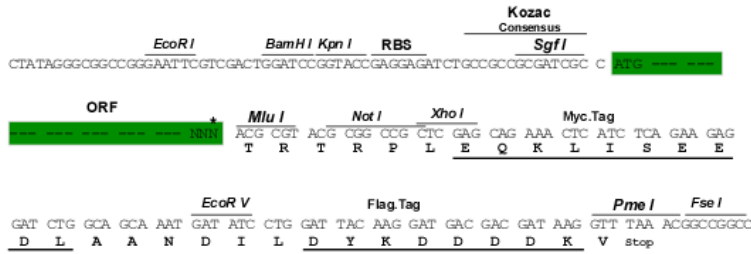
TRTRPLEQKLI SEEDLAANDILDYKDDDDKV

Chromatograms: https://cdn.origene.com/chromatograms/mm9014_a09.zip

Restriction Sites: Sgfl-MluI

Cloning Scheme:

Cloning sites used for ORF Shuttling:



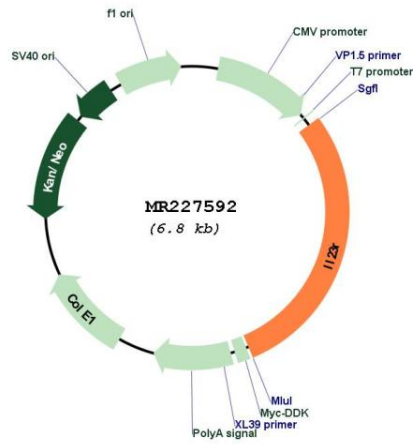
* The last codon before the Stop codon of the ORF

ACCN: NM_144548

ORF Size: 1977 bp

OTI Disclaimer:	Due to the inherent nature of this plasmid, standard methods to replicate additional amounts of DNA in E. coli are highly likely to result in mutations and/or rearrangements. Therefore, OriGene does not guarantee the capability to replicate this plasmid DNA. Additional amounts of DNA can be purchased from OriGene with batch-specific, full-sequence verification at a reduced cost. Please contact our customer care team at custsupport@origene.com or by calling 301.340.3188 option 3 for pricing and delivery.
	The molecular sequence of this clone aligns with the gene accession number as a point of reference only. However, individual transcript sequences of the same gene can differ through naturally occurring variations (e.g. polymorphisms), each with its own valid existence. This clone is substantially in agreement with the reference, but a complete review of all prevailing variants is recommended prior to use. More info
OTI Annotation:	This clone was engineered to express the complete ORF with an expression tag. Expression varies depending on the nature of the gene.
Components:	The ORF clone is ion-exchange column purified and shipped in a 2D barcoded Matrix tube containing 10ug of transfection-ready, dried plasmid DNA (reconstitute with 100 ul of water).
Reconstitution Method:	<ol style="list-style-type: none"> 1. Centrifuge at 5,000xg for 5min. 2. Carefully open the tube and add 100ul of sterile water to dissolve the DNA. 3. Close the tube and incubate for 10 minutes at room temperature. 4. Briefly vortex the tube and then do a quick spin (less than 5000xg) to concentrate the liquid at the bottom. 5. Store the suspended plasmid at -20°C. The DNA is stable for at least one year from date of shipping when stored at -20°C.
RefSeq:	NM_144548.1 , NP_653131.2
RefSeq Size:	2488 bp
RefSeq ORF:	1980 bp
Locus ID:	209590
UniProt ID:	Q8K4B4
Cytogenetics:	6 C1
MW:	76 kDa
Gene Summary:	Associates with IL12RB1 to form the interleukin-23 receptor. Binds IL23 and mediates T-cells, NK cells and possibly certain macrophage/myeloid cells stimulation probably through activation of the Jak-Stat signaling cascade. IL23 functions in innate and adaptive immunity and may participate in acute response to infection in peripheral tissues. IL23 may be responsible for autoimmune inflammatory diseases and be important for tumorigenesis (By similarity).[UniProtKB/Swiss-Prot Function]

Product images:



Circular map for MR227592