

## Product datasheet for **MR227576L2**

### Smad6 (NM\_008542) Mouse Tagged Lenti ORF Clone

#### Product data:

Product Type:	Expression Plasmids
Product Name:	Smad6 (NM_008542) Mouse Tagged Lenti ORF Clone
Tag:	mGFP
Symbol:	Smad6
Synonyms:	b2b390Clo; Madh6
Mammalian Cell Selection:	None
Vector:	pLenti-C-mGFP (PS100071)
E. coli Selection:	Chloramphenicol (34 ug/mL)
ORF Nucleotide Sequence:	The ORF insert of this clone is exactly the same as(MR227576).
Restriction Sites:	HindIII-RsrII
Cloning Scheme:	□
ACCN:	NM_008542
ORF Size:	1500 bp
OTI Disclaimer:	<p>Due to the inherent nature of this plasmid, standard methods to replicate additional amounts of DNA in E. coli are highly likely to result in mutations and/or rearrangements. Therefore, OriGene does not guarantee the capability to replicate this plasmid DNA. Additional amounts of DNA can be purchased from OriGene with batch-specific, full-sequence verification at a reduced cost. Please contact our customer care team at <a href="mailto:custsupport@origene.com">custsupport@origene.com</a> or by calling 301.340.3188 option 3 for pricing and delivery.</p> <p>The molecular sequence of this clone aligns with the gene accession number as a point of reference only. However, individual transcript sequences of the same gene can differ through naturally occurring variations (e.g. polymorphisms), each with its own valid existence. This clone is substantially in agreement with the reference, but a complete review of all prevailing variants is recommended prior to use. <a href="#">More info</a></p>
OTI Annotation:	This clone was engineered to express the complete ORF with an expression tag. Expression varies depending on the nature of the gene.



[View online »](#)

**Components:** The ORF clone is ion-exchange column purified and shipped in a 2D barcoded Matrix tube containing 10ug of transfection-ready, dried plasmid DNA (reconstitute with 100 ul of water).

**Reconstitution Method:**

1. Centrifuge at 5,000xg for 5min.
2. Carefully open the tube and add 100ul of sterile water to dissolve the DNA.
3. Close the tube and incubate for 10 minutes at room temperature.
4. Briefly vortex the tube and then do a quick spin (less than 5000xg) to concentrate the liquid at the bottom.
5. Store the suspended plasmid at -20°C. The DNA is stable for at least one year from date of shipping when stored at -20°C.

**RefSeq:** [NM\\_008542.3](#)

**RefSeq Size:** 2971 bp

**RefSeq ORF:** 1488 bp

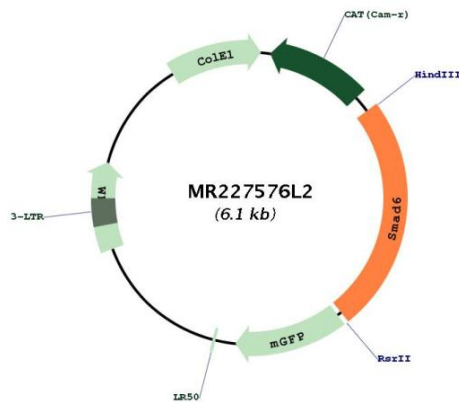
**Locus ID:** 17130

**UniProt ID:** [O35182](#)

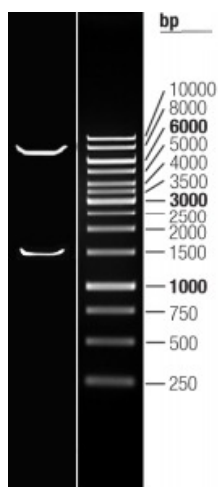
**Cytogenetics:** 9 C

**Gene Summary:** Binds to regulatory elements in target promoter regions (By similarity). May block the BMP-SMAD1 signaling pathway by competing with SMAD4 for receptor-activated SMAD1-binding (By similarity). Acts as a mediator of TGF-beta and BMP antiinflammatory activity. Suppresses IL1R-TLR signaling through its direct interaction with PEL1, preventing NF-kappa-B activation, nuclear transport and NF-kappa-B-mediated expression of proinflammatory genes. [UniProtKB/Swiss-Prot Function]

**Product images:**



Circular map for MR227576L2



Double digestion of MR227576L2 using BamHI and RsrII