

## Product datasheet for MR227509L4

### Ikzf1 (NM\_009578) Mouse Tagged Lenti ORF Clone

#### Product data:

Product Type:	Expression Plasmids
Product Name:	Ikzf1 (NM_009578) Mouse Tagged Lenti ORF Clone
Tag:	mGFP
Symbol:	Ikzf1
Synonyms:	5832432G11Rik; hlk-1; I; Ikaros; LyF-; LyF-1; mKIAA4227; Zfpn; Zfpn1a1; Znfn1a1
Mammalian Cell Selection:	Puromycin
Vector:	pLenti-C-mGFP-P2A-Puro (PS100093)
E. coli Selection:	Chloramphenicol (34 ug/mL)
ORF Nucleotide Sequence:	The ORF insert of this clone is exactly the same as(MR227509).
Restriction Sites:	SgfI-MluI
Cloning Scheme:	

Cloning sites used for ORF Shuttling:



\* The last codon before the Stop codon of the ORF.

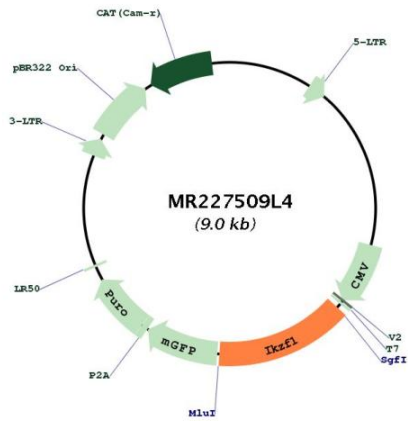
ACCN:	NM_009578
ORF Size:	1287 bp



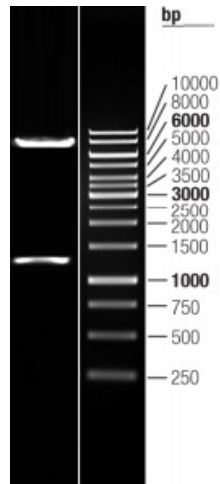
[View online »](#)

<b>OTI Disclaimer:</b>	The molecular sequence of this clone aligns with the gene accession number as a point of reference only. However, individual transcript sequences of the same gene can differ through naturally occurring variations (e.g. polymorphisms), each with its own valid existence. This clone is substantially in agreement with the reference, but a complete review of all prevailing variants is recommended prior to use. <a href="#">More info</a>
<b>OTI Annotation:</b>	This clone was engineered to express the complete ORF with an expression tag. Expression varies depending on the nature of the gene.
<b>Components:</b>	The ORF clone is ion-exchange column purified and shipped in a 2D barcoded Matrix tube containing 10ug of transfection-ready, dried plasmid DNA (reconstitute with 100 ul of water).
<b>Reconstitution Method:</b>	<ol style="list-style-type: none"> <li>1. Centrifuge at 5,000xg for 5min.</li> <li>2. Carefully open the tube and add 100ul of sterile water to dissolve the DNA.</li> <li>3. Close the tube and incubate for 10 minutes at room temperature.</li> <li>4. Briefly vortex the tube and then do a quick spin (less than 5000xg) to concentrate the liquid at the bottom.</li> <li>5. Store the suspended plasmid at -20°C. The DNA is stable for at least one year from date of shipping when stored at -20°C.</li> </ol>
<b>RefSeq:</b>	<a href="#">NM_009578.2</a>
<b>RefSeq Size:</b>	5190 bp
<b>RefSeq ORF:</b>	1287 bp
<b>Locus ID:</b>	22778
<b>Cytogenetics:</b>	11 7.02 cM
<b>Gene Summary:</b>	The protein encoded by this gene belongs to a family of transcription factors that are characterized by a set of four DNA-binding zinc fingers at the N-terminus and two C-terminal zinc fingers involved in protein dimerization. It is regulated by both epigenetic and transcription factors. This protein is a transcriptional regulator of hematopoietic cell development and homeostasis. In addition, it is required to confer temporal competence to retinal progenitor cells during embryogenesis, demonstrating an essential function in nervous system development. Alternative splicing results in multiple transcript variants encoding different isoforms. [provided by RefSeq, Sep 2014]

Product images:



Circular map for MR227509L4



Double digestion of MR227509L4 using SgfI and MluI