

Product datasheet for **MR227498**

Enpp1 (NM_008813) Mouse Tagged ORF Clone

Product data:

Product Type:	Expression Plasmids
Product Name:	Enpp1 (NM_008813) Mouse Tagged ORF Clone
Tag:	Myc-DDK
Symbol:	Enpp1
Synonyms:	4833416E15Rik; AI428932; C76301; CD203c; E-N; E-NPP 1; E-NPP1; Ly-4; Ly-41; M6S1; N; NPP1; Npps; P; PC-; PC-1; Pca; Pca-1; Pd; PdnP1; ttw; twy
Mammalian Cell Selection:	Neomycin
Vector:	pCMV6-Entry (PS100001)
E. coli Selection:	Kanamycin (25 ug/mL)



[View online »](#)

ORF Nucleotide Sequence:

>MR227498 representing NM_008813
 Red=Cloning site Blue=ORF Green=Tags(s)

TTTTGTAATACGACTCACTATAGGGCGGCCGGGAATTCGTCGACTGGATCCGGTACCGAGGAGATCTGCC
 GCC**CGGATCGCC**

ATGGAGCGCGACGGCACCAGGCAGGGCACGGGCCCGGCACGGGTGTCAGCGGAAACGGTCGCGAGCTCG
 AGTCACCAGCCGGCTTCGCTGCTCGCGCCATGGACCTAGGAGAGGAGCCGCTGGAGAAGGCGGAGCG
 TGCCCGCCCTGCCAAAGACCCCAACACCTACAAAGTGCTGTCGCTGGTTTTGTCAGTATGTGTGCTAACA
 ACAATTCTTGGTTGTATATTTGGGTTGAAACCAAGCTGCGCCAAAGAAGTAAAAAGTTGCAAAGGCCGCT
 GCTTTGAAAGGACGTTACAGCAACTGTCGCTGTGATGCTGCCTGTGTACGCTTGGGAACTGCTGTCTGGA
 TTTCCAGGAGACCTGTGTGGAACCAACACATATATGGACTTGCAACAAATTCAGGTGCGGTGAGAAGAGG
 CTGTCCAGGTTTCGTGTCTCTGTGCAGACGACTGCAAAACCCACAATGACTGTTGCATCAACTACAGTT
 CTGTGTGCCAAGATAAGAAGAGTTGGGTAGAAGAAACATGTGAAAGCATCGATACCCCGGAGTGTCCAGC
 AGAGTTTGAATCACCCCTACTCTTTGTTTTCTTTGGATGGATTGAGAGCTGAGTATTTGCACACCTGG
 GGTGGACTTCTTCTGTCAATTAGCAAGCTGAAAACTGTGGAACATACACTAAAAACATGAGGCCTATGT
 ACCCTACCAAGACGTTTTCCAATCATTACAGCATCGTACAGGACTTTATCCGGAATCCCATGGCATAAT
 TGATAACAAGATGTATGATCCCAAAATGAATGCTTCTTTCTCGCTTAAAAGTAAAGAGAAATTAACCCCT
 TTGTGGTACAAAGGACAGCCGATTTGGGTGACCGCTAATCATCAGGAGGTCAAGTCCGGCACATACTTTT
 GGCCAGGATCAGATGTGGAGATTGACGGGATTCTACCAGATATCTACAAAGTGTATAATGGGTGAGTACC
 ATTTGAAGAAAGGATTTAGCTGTTCTTGAGTGGCTGCAGCTTCTAGCCATGAAAGACCCACTTTTAC
 ACTCTGTATTTAGAAGAACCAGATCTTCAGGGCATTACATGGACCAGTCAGCAGCGAGGTCATCAAGG
 CCTTGCAGAAGGTTGACCGCTGGTCCGATGCTGATGGACGGCTGAAGGACCTGGGCTGGATAAATG
 CCTGAACCTCATCTCATTTCAGATCACGGCATGGAACAAGGCAGCTGTAAAGAAGTATGTGTACCTGAAT
 AAGTACTTGGGGATGTGAACAATGTGAAAGTTGTGTATGGACCTGCTGCTCGGTTGAGACCCACTGATG
 TTCCAGAGACATACTATTCATTTAACTATGAAGCCCTTGCAAAAAATCTTTCTTCCGGGAGCCAAACCA
 GCATTTCCGGCCTTACCTGAAACCCTTCTACCCAAGCGCTTACACTTCGCTAAAAGTGACCGGATTGAG
 CCCCTGACCTTCTACCTGGACCTCAGTGGCAACTTGCCTTGAATCCATCAGAGAGGAAATATTGTGGAA
 GTGGATTCATGGCTCTGACAACCTGTTTTCAACATGCAAGCTCTTTTTATTGGCTATGGACCTGCCTT
 CAAGCATGGTGTGAAGTTGACTCCTTTGAAAATATTGAAGTCTATAACTAATGTGTGACTTACTGGGT
 TTGATCCAGCTCCCAATAATGGAAGTCATGGCAGCCTTAACCACCTTCTAAAGAAACCCATTTACAACC
 CAAGTCATCCCAAGAAGAGGGCTTCTGTCTCAGTGTCCAATCAATCAACATCCAATGACCTCGGCTG
 CACATGTGACCCTTGATTGTGCCAATCAAGGACTTTGAGAAACAGCTTAATCTGACCACAGAAGATGAT
 GACATTTACCATATGACTGTACCCTACGGGAGGCCCGGATTCTACTGAAGCAGCACCGCGTCTGTCTAC
 TCCAGCAGCAACAGTTCTTGACCGGATACAGCCTGGACCTCCTCATGCCCTCTGGGCGTCTTACACCTT
 CCTCAGTAATGACCAATCTCCAGAGATGACTTTTCCAACCTGTCTGTACCAGGATCTTCGGATTCCCCTT
 AGTCTGTGCATAAATGTTCTATTACAAAAGCAATCTAAGCTAAGTTATGGGTTCTCACGCCACCGA
 GACTAAATAGAGTTTCAAATCACATATACTCTGAAGCGCTGCTTACATCTAATATAGTGCCAATGTATCA
 GAGTTTTCAAGTTATATGGCACTACCTTCATGACACCCTACTGCAAAGGTATGCCATGAAAGGAACGGC
 ATCAATGTTGTACGGTCCCGTGTGATTGATTATGACGGACGCTATGATTCTTAGAGATCCTGA
 AACAAAACAGCAGAGTCATCCGAAGCCAGGAAATCTGATTCCGACTCACTTCTTATTGTGCTCACAG
 CTGCAAGCAGCTGTCTGAGACTCCCTGGAGTGTCCGCCTTAGAGTCTCAGCTTACATACTGCCTCAT
 AGGCCTGATAACATTGAGAGCTGTACGCATGGGAAGCGGGAGTCTTATGGGTCGAGGAGTTGCTGACCT
 TGCACAGAGCTCGGTCACAGACGTGGAACCTCATCTGCGCTCAGCTTCTACCAGGACCGACAAGATC
 AGTTTCAGAACTGCTGAGGTTGAAAACACATTTGCCAATCTTTCAGCCAAGAAGAC

ACGCGTACGCGGCCGCTCGAGCAGAACTCATCTCAGAAGAGGATCTGGCAGCAATGATATCCTGGATT
 ACAAGGATGACGACGATAAGGTTTAA

Protein Sequence: >MR227498 representing NM_008813
Red=Cloning site Green=Tags(s)

```
MERDGDQAGHGPRHGSAGNGRELESPAASLLAPMDLGEEPLEKAERARPAKDPNTYKVL SLVLSVCVLT
TILGCIFGLKPSCAKEVK SCKGRCFERTFSNCRDAACVSLGNCCLDFQETC VEPHTIWCNKFRCGEKR
LSRFVCSADDCKTHNDCCINYSVVCQDKKSWEETCESIDTPECPAEFESPTLLFLSLDGFRAEYLHTW
GGLLPVI SKLKNCGTYTKNMRMPYPTKTFPNHYSIVTGLYPESHGII DNKMYDPKMNASFSLKSKEKFNP
LWYKGQPIWVTANHQE VKSGTYFWPGSDVEIDGILPDIYKYVNGSVPFEE RILAVLEWLQLPSHERPHFY
TLYLEEPDSSGSHGVPVSSEVIKALQKVDR LVGMLMDGLKDLGLDKLNLILISDHGMEQGSCCKYVYLN
KYLGDVNNVKVYVYGAARLRPTDVPETYYSFNYEALAKNLS CREPNQHFRPYLKPFLPKRHLFAKSDRIE
PLTFYLD PQWLALNP SERKYCGSGFHGSDNLF SNMQALFIGYGP AFKHGAEVDSFENIEVYNLMCDLLG
LIPAPNNGSHGSLNHL LKPIYNPSHPKEEGFLSQCP IKSTSNDL GCTCDPWIVPIKDFEKQLNLTTEDD
DIYHMTVPYGRPRILLKQHRVCLLQQQFLTGYSLDLLMPLWASYTFLSNDQFSRDFSNCLYQDLRIPL
SPVHKCSYKSNKLSYGFLTPPRLNRVSNHIYSEALLTSNIVPMYQSFQVIWHYLHDTLLQRYAHERNG
INVVSGPVDFDYDGRYDSLEILKQNSRVIRSQEILIPTHFFIVLTSCKQLSETPLECSALESSAYILPH
RPDNIESC THGKRESSWVEELLTHRARVTDVELITGLSFYQDRQESVSELLRLKTHLPIFSQED
```

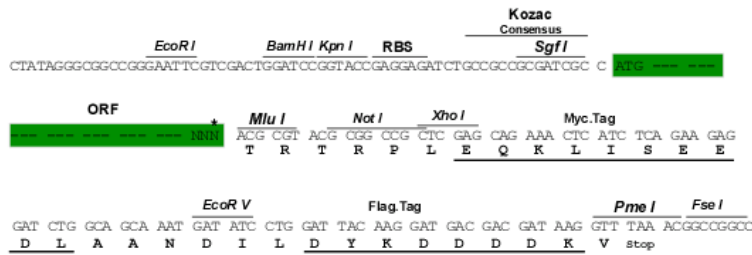
TRTRPLEQKLISEEDLAANDILDYKDDDDKV

Chromatograms: https://cdn.origene.com/chromatograms/mm9003_b12.zip

Restriction Sites: SgfI-MluI

Cloning Scheme:

Cloning sites used for ORF Shuttling:



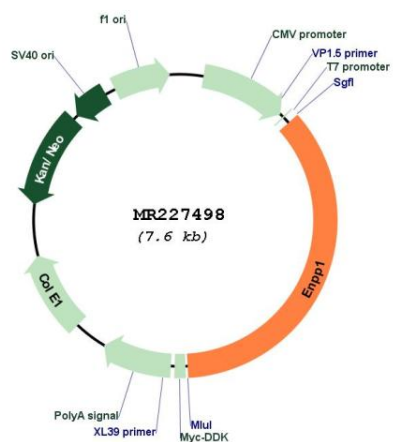
* The last codon before the Stop codon of the ORF

ACCN: NM_008813

ORF Size: 2715 bp

OTI Disclaimer:	The molecular sequence of this clone aligns with the gene accession number as a point of reference only. However, individual transcript sequences of the same gene can differ through naturally occurring variations (e.g. polymorphisms), each with its own valid existence. This clone is substantially in agreement with the reference, but a complete review of all prevailing variants is recommended prior to use. More info
OTI Annotation:	This clone was engineered to express the complete ORF with an expression tag. Expression varies depending on the nature of the gene.
Components:	The ORF clone is ion-exchange column purified and shipped in a 2D barcoded Matrix tube containing 10ug of transfection-ready, dried plasmid DNA (reconstitute with 100 ul of water).
Reconstitution Method:	<ol style="list-style-type: none">1. Centrifuge at 5,000xg for 5min.2. Carefully open the tube and add 100ul of sterile water to dissolve the DNA.3. Close the tube and incubate for 10 minutes at room temperature.4. Briefly vortex the tube and then do a quick spin (less than 5000xg) to concentrate the liquid at the bottom.5. Store the suspended plasmid at -20°C. The DNA is stable for at least one year from date of shipping when stored at -20°C.
RefSeq:	NM_008813.4 , NP_032839.3
RefSeq Size:	3224 bp
RefSeq ORF:	2718 bp
Locus ID:	18605
Cytogenetics:	10 12.26 cM
MW:	103.5 kDa
Gene Summary:	This gene encodes a member of the nucleoside pyrophosphatase/phosphodiesterase family of enzymes that catalyzes the hydrolysis of pyrophosphate and phosphodiester bonds in nucleotide triphosphates and oligonucleotides, respectively, to generate nucleoside 5'-monophosphates. The encoded protein is a type II transmembrane glycoprotein that negatively regulates bone mineralization. Mice harboring a nonsense mutation in this gene, termed tiptoe walking (ttw), exhibit ectopic ossification of the spinal ligaments. The encoded protein binds to the insulin receptor, inhibits downstream signaling events and induces insulin resistance and glucose tolerance. This gene is located adjacent to a paralog on chromosome 10. Alternative splicing results in multiple transcript variants encoding different isoforms. [provided by RefSeq, Apr 2015]

Product images:



Circular map for MR227498