

## Product datasheet for MR227482

### Fgf23 (NM\_022657) Mouse Tagged ORF Clone

#### Product data:

Product Type:	Expression Plasmids
Product Name:	Fgf23 (NM_022657) Mouse Tagged ORF Clone
Tag:	Myc-DDK
Symbol:	Fgf23
Synonyms:	Fgf8b
Mammalian Cell Selection:	Neomycin
Vector:	pCMV6-Entry (PS100001)
E. coli Selection:	Kanamycin (25 ug/mL)
ORF Nucleotide Sequence:	>MR227482 ORF sequence Red=Cloning site Blue=ORF Green=Tags(s)

TTTTGTAATACGACTCACTATAGGGCGGCCGGAATTCGTCGACTGGATCCGGTACCGAGGAGATCTGCC  
GCC**CGATCGCC**

ATGCTAGGGACCTGCCTTAGACTCCTGGTGGGCGCGCTCTGCACTGTCTGCAGCTTGGGCACTGCTAGAG  
CCTATCCAGACACTTCCCATTGCTTGGCTCCAAGTGGGAAGCCTGACCCACCTGTACACGGCTACAGC  
CAGGACCAGCTATCACCTACAGATCCATAGGGATGGTCATGTAGATGGCACCCCATCAGACCATCTAC  
AGTGCCCTGATGATTACATCAGAGGACCGCGCTCTGTGGTGATAACAGGAGCCATGACTCGAAGTTCC  
TTTGTATGGATCTCCACGGCAACATTTTGGATCGCTTCACTTCAGCCCAGAGAATTGCAAGTTCCGCCA  
GTGGACGCTGGAGAATGGCTATGACGTCTACTTGTGCGAGAAGCATCACTACCTGGTGAGCTGGGCGCG  
GCCAAGCGCATCTTCCAGCCGGGCACCAACCCGCGCCCTTCTCCAGTTCTGGCGCGCAGGAACGAGG  
TCCCGTGTCTGCACTTCTACTGTTCGCCCACGGCGCCACACGCGCAGCGCCGAGGACCCACCCGAGCG  
CGACCCACTGAACGTGCTCAAGCCGCGGCCCGCCGCGCCACGCTGTGCCTGTATCCTGCTCTCGCGAGCTG  
CCGAGCGCAGAGGAAGGTGGCCCCGAGCCAGCGATCCTCTGGGGTGTGCGCAGAGGCCGTGGAGATG  
CTCGCGGGGGCGGGAGGCGGGATAGGTGTGCGCCCTTTCCAGGTTTCGTC

**ACGCGT**ACGCGGCCGCTCGAGCAGAACTCATCTCAGAAGAGGATCTGGCAGCAAATGATATCCTGGATT  
ACAAGGATGACGACGATAAGGTTTAA



[View online »](#)

**Protein Sequence:** >MR227482 protein sequence  
Red=Cloning site Green=Tags(s)

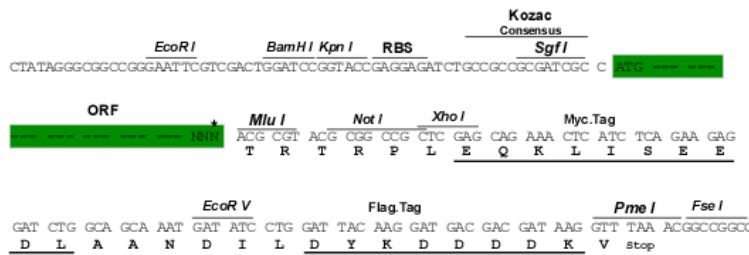
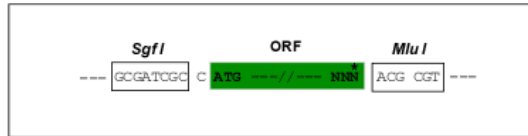
MLGTCLRLLVGALCTVCSLGTARAYPDTSPLLGSNWGSLTHLYTATARTSYHLQIHRDGHVDGTPHQTIY  
 SALMITSEDAGSVVITGAMTRRFLCMDLHGNIFGSLHFSPECKFRQWLENGYDYYLSQKHLYL VSLGR  
 AKRIFQPGTNPPPFSQLARRNEVPLLHFYTVRPRRHSRAEDPPERDPLNLVKPRPRATPVVSCSREL  
 PSAEEGGPAASDPLGVLRRGRGDARGGAGGADRCRPFPRFV

TRTRPLEQKLISEEDLAANDILDYKDDDDKV

**Restriction Sites:** SgfI-MluI

**Cloning Scheme:**

Cloning sites used for ORF Shuttling:



\* The last codon before the Stop codon of the ORF

**ACCN:** NM\_022657

**ORF Size:** 756 bp

**OTI Disclaimer:** The molecular sequence of this clone aligns with the gene accession number as a point of reference only. However, individual transcript sequences of the same gene can differ through naturally occurring variations (e.g. polymorphisms), each with its own valid existence. This clone is substantially in agreement with the reference, but a complete review of all prevailing variants is recommended prior to use. [More info](#)

**OTI Annotation:** This clone was engineered to express the complete ORF with an expression tag. Expression varies depending on the nature of the gene.

**Components:** The ORF clone is ion-exchange column purified and shipped in a 2D barcoded Matrix tube containing 10ug of transfection-ready, dried plasmid DNA (reconstitute with 100 ul of water).

**Reconstitution Method:**

1. Centrifuge at 5,000xg for 5min.
2. Carefully open the tube and add 100ul of sterile water to dissolve the DNA.
3. Close the tube and incubate for 10 minutes at room temperature.
4. Briefly vortex the tube and then do a quick spin (less than 5000xg) to concentrate the liquid at the bottom.
5. Store the suspended plasmid at -20°C. The DNA is stable for at least one year from date of shipping when stored at -20°C.

**RefSeq:** [NM\\_022657.1](#), [NM\\_022657.2](#), [NM\\_022657.3](#), [NM\\_022657.4](#), [NP\\_073148.1](#)

**RefSeq Size:** 2702 bp

**RefSeq ORF:** 756 bp

**Locus ID:** 64654

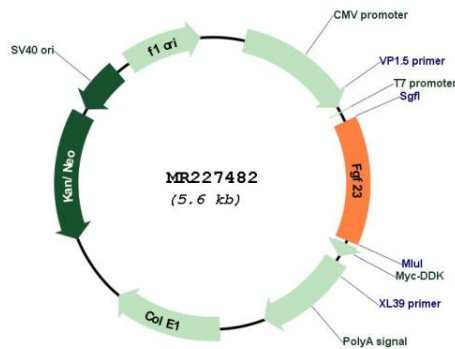
**UniProt ID:** [Q9EPC2](#)

**Cytogenetics:** 6 F3

**MW:** 27.7 kDa

**Gene Summary:** This gene encodes a member of the fibroblast growth factor family. The encoded protein regulates phosphate homeostasis and vitamin D metabolism. Mutation of the related gene in humans causes autosomal dominant hypophosphatemic rickets (ADHR). The secreted protein is further cleaved into N- and C-terminal chains, which results in loss of function. [provided by RefSeq, Mar 2013]

### Product images:



Circular map for MR227482