

Product datasheet for **MR227478**

lqgap1 (NM_016721) Mouse Tagged ORF Clone

Product data:

Product Type: Expression Plasmids
Product Name: lqgap1 (NM_016721) Mouse Tagged ORF Clone
Tag: Myc-DDK
Symbol: lqgap1
Synonyms: AA682088; D7Ertd237e; D7Ertd257e; mKIAA0051
Mammalian Cell Selection: Neomycin
Vector: pCMV6-Entry (PS100001)
E. coli Selection: Kanamycin (25 ug/mL)
ORF Nucleotide Sequence: >MR227478 representing NM_016721
Red=Cloning site Blue=ORF Green=Tags(s)

TTTTGTAATACGACTCACTATAGGGCGGCCGGAATTCGTCGACTGGATCCGGTACCGAGGAGATCTGCC
GCC**CGATCGCC**

ATGTCGCGCCGGAGGAGGTTGATGGCCTGGGTGTGGTCCGGCCGCACTATGGCTCCGTCCTGGATAATG
AGAGGCTCACTGCAGAGGAGATGGATGAGCGGAGACGGCAGAACGTGGCTTATGAATACCTTTGTCATCT
GGAAGAAGCAAAGAGGTGGATGGAAGCATGCCTAGGTGAGGACCTGCCGCCACACAGAGCTAGAGGAG
GGCCTTAGAAACGGAGTCTACCTTGCCAAGCTAGGGAACCTCTTCTCTCCCAAAGTGGTGTCCCTGAAGA
AAATCTATGATCGAGAACAGACCAGATACAAGGCTACCGGCTCCACTTCAGACACACGGATAATGTGAT
TCAGTGGCTGAATGCCATGGATGAGATTGGTTGCCTAAGATTTTTACCCAGAAACCACAGATATCTAT
GACCGGAAGAACATGCCAAGATGCATCTACTGTATCCACGCCCTCAGTTTGTACCTGTTCAAACCTGGGCC
TGGCTCCTCAGATTCAAGACCTGTATGGAAAGGTTGATTTACAGAGAAGAAATCAACAACATGAAGAT
CGAGCTGGAGAAGTACGGGATCCAGATGCCTGCCTTCAGCAAGATCGGGGCATCCTGGCTAATGAGCTC
TCAGTGGATGAAGCTGCGCTACATGCTGCTGTTATTGCTATTAATGAAGCGATTGATCGCAGAGTTGCAG
CTGACACTTTTACGGCTCTAAAAACCCCAATGCCATGCTCGTCAATCTGAAGAAGGCCTGGCTCCAC
GTACCAAGACGTGCTTTACCAGGCAAGCAGGACAAGATGACAAACGCTAAAAACAGGACGAAAACTCT
GACAGAGAAAGGACGTTTATGAGGAGCTGCTCACACAAGCTGAAATCCAAGGGAATGTAACAAGTCA
ACACATCTTCTGCCCTGGCCAACATCAGCCTGGCTTTAGAGCAGGCTGTGCAGTGACCCTGCTCAAGGC
TCTGCAGTCACTGGCTCTGGGCCTCCGAGGGCTGCAGACCCAGAACAGCGACTGGTACATGAAGCAGCTA
CAGAGTGTCTGCAGCAAAAGAGACAGAGTGGCCAGACTGACCCCTGCAGAAGGAGGAGGTACAGGCCG
GAGTGGATGCTGCCAACAGTGTGCCAGCAGTACCAACGACGGTTGGCAGCAGTGGCAGCAATCAACGC
TGCCATCCAGAAGGCATCGCTGAGAAGACCGTGTGGAGCTAATGAATCCTGAAGCCAGCTGCCCCAG
GTGTATCCATTTGCAGCTGATCTCTATCAGAAGGAGTTGGCCACCCTGCAGCAGCAGAGCCCTGAGCATA
GCCTCACCATCCTGAGCTCACTGTTGCTGTGGAGATGCTGTATCCGTGGCCCTCATCAACAGGGCGCT
GGAGTCAGGAGACATGACCACTGTGTGAAGCAGCTGAGCAGCTCAGTTACGGCCCTTACCAACATCGAG



[View online »](#)

GAAGAAAAGTGTCAAAGGTATCTCGATGAGCTGATGAAGCTGAAGGCTCAGGCACATGCCGAGAATAATG
 CATTATTACATGGAATGACATCCAGGCGTGTGTGGACCATGTGAACCTGGTGGTCCATGAGGAGCATGA
 GCGGATTTGGCCATCGGCTTGATTAATGAAGCCCTGGATGAAGGGGACGCTCAGAAGACTCTGCAGGCC
 CTGCAGATCCCTGCAGCCAAGCTCGAGGGCGTCTTGCAGAAGTGGCACAGCACTATCAAGACACGCTGA
 TCAGAGCAAAGAGAGAAAAGGCCAGGAAACACAGGATGAGTCAGCTGTGTTATGGTTGGATGAAATTCA
 AAGTGAATCTGGCAGTCCAACAAGACACCCAAGAGGCCAGAGGTTTGCCTTAGGAATCTCTGCCATC
 AATGAAGCAGTAGACAGCGGTGATGTTGGCAGAACCTGAGTCCCCTACGTTCTCCCGACGTTGGCTTAT
 ATGGAGTGATCCCGAATGTGGGAAACGTACCAGAGTGACCTTGTCTGAAAGCAAGAAAGAGACTGGC
 AGCAGGAGATAAATACAGCAAGTGGGTGAAGCACTGGGTGAAAGGCGGGTACCATTACTACCACAACCTG
 GAGACGCAAGCAGGAGGATGGGCTGAGCCCCAGACTTTGTGCAGAATTCTGTGCAGCTTCTCGAGAGG
 AGATCCAGAGCTCCATCTCTGGAGTAACCGCTGCATATAACCGAGAGCAGCTTTGGCTGGCCAACGAAGG
 CTTGATCACCAAGCTGCAAGCCTGCTGCCGTGGTACCTCGTTCGACAGGAATCCGATCCCGGATGAAT
 TTTCTGAAGAAACAGATCCCTGCCATCACCTGCATTAGTCACAGTGGAGAGGATACAAACAGAAGAAGG
 CATATCAAGATCGGCTGGCTTACCTGCACTCCCATAAAGACGAAGTTGTGAAGATTAGTCCCTTCCAG
 GATGCATCAAGCTCGAAAGCGCTATAGAGATCGCCTACAGTATTCGAGACCATATAAATGACATTATC
 AAAATCCAGGCTTTCATTCGGGCCAACAAAGCTCGTGATGACTACAAGACTCTCATCAATGCTGAGGACC
 CGCCTATGATTGTGGTCCGAAAGTTTGTCCACCTCCTGGACCAAAGTGATCAGGACTTCCAGGAGGAACT
 TGATCTCATGAAGATGCGCGAGGAGGTCAACCCATCCGTTCCAACAGCAGCTGGAGAACGACCTC
 AACCTCATGGATATCAAAATCGGACTGTGGTGAAGAACAAGTACAGCTGCAGGATGTGGTTTCCCAT
 GTAAAAAATACCAAAAAAATAAGGAACAGCTGTCCGACATGATGATAACAAGCAGAAGGGCGG
 GCTCAAGGCTTTGAGCAAAGAGAAGAGGGAGAAGCTGGAGGCCTATCAGCATCTTTTTATCTCTGCAG
 ACCAACCTACCTATCTGGCCAAGCTGATCTTTCAGATGCCACAAAACAAGTCCACCAAAATCATGGAT
 CTGTGATCTTACGCTGTACAACATGATCACTAACAGCGGGAGGAGTACCTGCTGCTGCGGCTTCCCA
 GACAGCTCTGCAGGAGGAGATCAAGTCAAAGTGGATCAGATTCAAGAAATCGTGACAGGAAACCTACG
 GTTATTAAGATGTTGTAAGTTTCAACCGTGGTCCCGGGGCCAGAATGCCCTCCGGCAGATCTTGCCC
 CTGTCTGAAGGAAATTAAGATGACAAGTCTCTCAACATCAAAACCGACCTGTGGATATTTACAAGTC
 TTGGGTTAATCAGATGGAGTCGACAGACAGGAGGCGAGCAAACCTGCCCTATGATGTGACTCCTGAACAA
 GCCTTGCTCATGAAGAAGTGAAGACGAGGTTAGACAACCTCCATCAGGAACATGAGGGCCGTGACAGACA
 AGTTCTCTCAGCCATCGTCAGCTCTGTGGACAAAATCCCTTATGGGATGCGCTTATTGCCAAAGTCT
 GAAGGATTCCTGCACGAGAAGTCCCTGACGCTGGTGGAGCAGCTGCTGAAGATTATCGGTAACCTG
 CTTTACTACCGATACATGAACCCAGCCATCGTCGCTCCCGATGCCTTCGACATCATTGACCTGTCAGCAG
 GGGGCCAGCTCACACAGACCAGCGCAGAAACCTGGGCTCCATTGCCAAGATGCTCCAGCAGCGGGCGTC
 CAACAAGATGTTTCTGGGCGATAATGCCCACTTAAAGCATTAATGAGTATCTCTCGCAGTCTACCAG
 AAATTCAGACGGTTTTTCCAAGTGGCTGTGACGTCCCAGAGCTGCAGGATAAAATTAACGTGGATGAGT
 ACTCTGACCTAGTCACCCCTCACTAAGCCAGTTATCTACATCTCCATTGGCGAAATCATCAACACCCACAC
 TCTCTGTTGGACCATCAGGATGCCATTGCTCCAGAGCATAACGACCCCATCCACGAACTTCTGGACGAC
 CTTGGGGAGGTGCCACCATTGAGTCCCTTATAGGAGAAAAGCTGTGGCAATCAACGACCCCAACAAGG
 AGGCTCTGGCTAAGACGGAAGTGTCTCACGTTGACCAACAAGTTTACGCTGCCTGGTGACGAGAACCG
 AGAGATGGACGCTCGGACCATCTTACTGAATACAAAACGTTTAAATGTGGATGTCATCCGGTCCAGGCCA
 GGAGAGACCTTGACTGAAATTCTAGAAAACCCAGCCACCAATGAACAGGAAGCTGAACATCAGAGGGCCA
 TGACAGACGCGGCTATCCGCGATGCCAAAACCCCTGACAAGATGAAAAATCAAAGCCCATGAAGGAGGA
 TAACAACCTCAGCCTCCAGGAGAAGAAAGAGAAGATCCAGACTGGCCTAAAGAAGCTAACGGAGCTTGGG
 ACGGTGGACCCAAAGAACAGATACCAGAACTCATCAACGACATTGCCAAGGATATCCGGAATCAGCGGA
 GATACAGGCAGAGGAGGAAAGCTGAATGGTAAAACGACGACGACTCGGCGCTGAACTCTAAGGC
 CACCTTTACGGCGAGCAGGTGGACTACTACAAGACTACATCAAACCTGCTTGGATAACTTGGCCAGC
 AAGGGCAAGTCTCAAAAAGCCTAGGGAAATGAAAGGCAAGAAAAGCAAAAAGATTTCTCTGAAGTACA
 CAGCAGCGAGGCTGCATGAGAAGGGCTCTTCTGGAGATTGAAGACCTCAGGCAAACCAATTTAAAAA
 TGTATCTTCGAAATTGGTCCAACAGAAGAAGTTGGAGACTTTGAAGTAAAGCCAAAGTTTATGGGAGTT
 CAGATGGAGACTTTCATGTTGCATTATCAGGACTTGTGACGCTACAGTATGAAGGAGTTGACGTTATGA
 AATTATTTGATAGAGCTAAAGTGAATGTCAACCTCCTGATCTTCTTCTCAACAAAAAGTTCTATGGGAA
 G

ACGCGTACGCGGCCGCTCGAGCAGAAACTCATCTCAGAAGAGGATCTGGCAGCAAATGATATCCTGGATT
ACAAGGATGACGACGATAAGGTTTAA

Protein Sequence:

>MR227478 representing NM_016721
Red=Cloning site Green=Tags(s)

MSAAEEVDGLGVVRPHYGSVLDNERLTAEMDERRRQNVAYEYLCHLEEAKRWMEACLGEDLPPTTELEE
GLRNGVYLAKLGNFFSPKVVSLLKKIYDREQTRYKATGLHFRHTDNVQWLNAMDEIGLPKIFYPETTDIY
DRKNMPCRYCIHALSLYLFLKGLAPQIQDLYGKVDFTTEEEINNMKIELEKYGIQMPAFSKIGGILANEL
SVDEAALHAAVIAINEAIDRRVAADFTTALKNPNAMLVNLEEGLAPTYQDVLVYQAKQDKMTNAKNRTENS
DRERDVEEELLTQAEIQGNVNKVTSSALANISLALAQCAVTLKALQSLALGLRGLQTQNSDWYMKQL
QSDLQQKRQSGQTDPLQKEEVQAGVDAANSAQQYQRRLAAVAAINAAIQKIAEKTVLELMNPEAQLPQ
VYPFAADLYQKELATLQQQSPEHSLTHPELTVAVEMLSSVALINRALESGDMTTVWKQLSSSVTGLTNIE
EENCQRYLDELMLKKAQHAENNAFITWNDIQACVDHVNLVVHEEHERILAIGLINEALDEGDAQTLQA
LQIPAAKLEGLAEVAQHYQDTRLIRAKREKAQETQDESAVLWLDLDEIQGGIWQSNKDTQEAQRFALGSAI
NEAVDSGDVGRTLSALRSPDVGLYGVIPCCGETYQSDLAEAKKKRLAAGDNNSKWVHWKGGYHYHNL
ETQAGGWAEPDFVQNSVQLSREEIQSSISGVTAAYNREQLWLANEGLITKLQACCRGYLVRQEFRRSMN
FLKKQIPAITCIQSQRGKQKAYQDRLAYLHSHKDEVVKIQSLARMHQARKRYRDLQYFRDHINDII
KIQAFIRANKARDDYKTLINAEDPPMIVVRKFVHLLDQSDQDFEELDLMKMREEVITLIRSNQQLENDL
NLMDIKIGLLVKNKITLQDVVSHSKLTKKNKEQLSDMMINKQKGLKALSKEKREKLEAYQHLFYLLQ
TNPTYLAKLIFQMPQNKSTKFMDSVIFTLNYASNQREEYLLRLFQTALQEEIKSKVDQIQEIVTGNPT
VIKVVSVFNRGARGQNALRQILAPVVKIIMDDKSLNIKTDPVDIYKSWVNMQESQTGEASKLPYDVTPEQ
ALSHEEVKTRLDNSIRNMRVTDKFLSAIVSSVDKIPYGMRFIAKVLKDSLHEKFPDAGEDELLKIIGNL
LYRYMNPAAIVAPDAFDIIDLSAGGQLTTDQRRNLGSIKMLQHAASNKMF LGDNAHLSIINEYLSQSYQ
KFRRFFQVACDPELQDKFNVDEYSDLVTLTKPVIYISIGEIIINTHTLLLDHQAIAPEHNDPIHELLDD
LGEVPTIESLIGESCGNSNDPNKEALAKTEVSLTLTKNFDVPGDENAEMDARTILLNTRKRLIVDVIRFQP
GETLTEILETPATNEQEAHEHQRAMQRRAIRDAKTPDKMKKSKPMKEDNLSLQEKKEIKQTGLKCLTEL
TVDPKNRYQELINDIAKDIRNQRRYRQRRAELVKLQQTYSALNSKATFYGEQVDYKSYIKTCLDNLAS
KGVSKKPREMKGKSKKISLKYTAARLHEKGVLEIEDLQANQFKNVIFEIGPTEEVGDFEVKAKFMGV
QMETFMLHYQDLLQLQYEGVAVMKLFDRAKVVNLLIFLLNKKFYGK

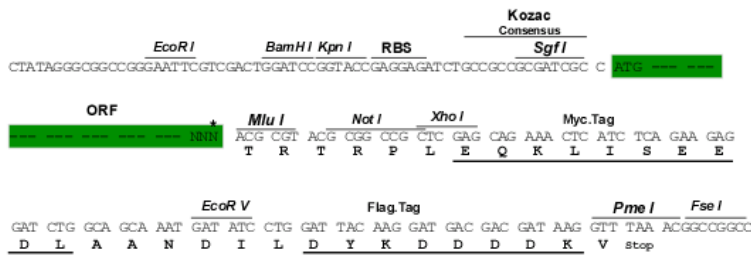
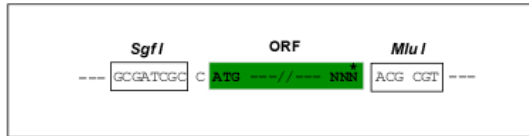
TRTRPLEQKLISEEDLAANDILDYKDDDDKV

Restriction Sites:

Sgfl-MluI

Cloning Scheme:

Cloning sites used for ORF Shuttling:



* The last codon before the Stop codon of the ORF

ACCN: NM_016721

ORF Size: 4971 bp

OTI Disclaimer: Due to the inherent nature of this plasmid, standard methods to replicate additional amounts of DNA in E. coli are highly likely to result in mutations and/or rearrangements. Therefore, OriGene does not guarantee the capability to replicate this plasmid DNA. Additional amounts of DNA can be purchased from OriGene with batch-specific, full-sequence verification at a reduced cost. Please contact our customer care team at custsupport@origene.com or by calling 301.340.3188 option 3 for pricing and delivery.

The molecular sequence of this clone aligns with the gene accession number as a point of reference only. However, individual transcript sequences of the same gene can differ through naturally occurring variations (e.g. polymorphisms), each with its own valid existence. This clone is substantially in agreement with the reference, but a complete review of all prevailing variants is recommended prior to use. [More info](#)

OTI Annotation: This clone was engineered to express the complete ORF with an expression tag. Expression varies depending on the nature of the gene.

Components: The ORF clone is ion-exchange column purified and shipped in a 2D barcoded Matrix tube containing 10ug of transfection-ready, dried plasmid DNA (reconstitute with 100 ul of water).

Reconstitution Method:

1. Centrifuge at 5,000xg for 5min.
2. Carefully open the tube and add 100ul of sterile water to dissolve the DNA.
3. Close the tube and incubate for 10 minutes at room temperature.
4. Briefly vortex the tube and then do a quick spin (less than 5000xg) to concentrate the liquid at the bottom.
5. Store the suspended plasmid at -20°C. The DNA is stable for at least one year from date of shipping when stored at -20°C.

RefSeq: [NM_016721.2](#), [NP_057930.2](#)

RefSeq Size: 7377 bp

RefSeq ORF: 4974 bp

Locus ID: 29875

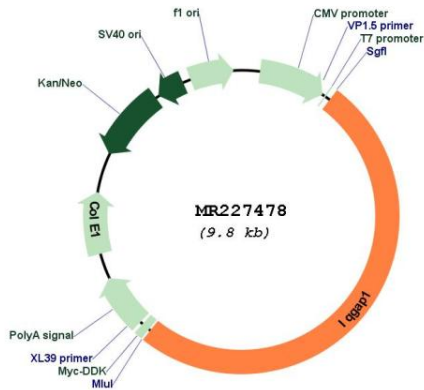
UniProt ID: [Q9JKF1](#)

Cytogenetics: 7 45.68 cM

MW: 189.2 kDa

Gene Summary:

Plays a crucial role in regulating the dynamics and assembly of the actin cytoskeleton. Binds to activated CDC42 but does not stimulate its GTPase activity (PubMed:16968698). It associates with calmodulin. Could serve as an assembly scaffold for the organization of a multimolecular complex that would interface incoming signals to the reorganization of the actin cytoskeleton at the plasma membrane. May promote neurite outgrowth. May play a possible role in cell cycle regulation by contributing to cell cycle progression after DNA replication arrest.[UniProtKB/Swiss-Prot Function]

Product images:


Circular map for MR227478