

Product datasheet for **MR227466**

Sept4 (NM_011129) Mouse Tagged ORF Clone

Product data:

Product Type:	Expression Plasmids
Product Name:	Sept4 (NM_011129) Mouse Tagged ORF Clone
Tag:	Myc-DDK
Symbol:	Sept4
Synonyms:	ARTS; Bh5; OTTMUSG00000001265; Pnutl2
Mammalian Cell Selection:	Neomycin
Vector:	pCMV6-Entry (PS100001)
E. coli Selection:	Kanamycin (25 ug/mL)



[View online »](#)

ORF Nucleotide Sequence:

>MR227466 representing NM_011129
 Red=Cloning site Blue=ORF Green=Tags(s)

TTTTGTAATACGACTCACTATAGGGCGGCCGGAATTCGTCGACTGGATCCGGTACCGAGGAGATCTGCC
 GCC**CGCATCGCC**

ATGGACCATTCACTGGGATGGCAAGGAACTCTGTCCCCGAGGACGGGACTGAAGCTGGGATCAAGCACT
 TCCTGGAGGACAGCAGTGATGATGCTGAGCTGAGCAAGTTCGTGAAGGATTTCCAGGAAGCGAACCCTA
 CCACTCAGCGGAGTCCAAGACAAGGGTGGCCAGGCCCCAGATCTTGGAGCCAAGGCCCCAGAGCCAGAC
 CTCTGTGATGATGACGTGGAGTTTAGAGGCTCCTTGTGGCCCCAGCCCTCTGACAGTCAGCAGTACTTCA
 GTGCCCCAGCCCTCTCAGCCCTTCTCCAGGCCCCGAGTCCATGGGGCAAGCTTGATCCTTATGATTC
 CTCTGAGGATGACAAGGAGTATGTGGGCTTGAACCCCTCCCAATCAAGTCCACAGGAAGTCTGTGAAG
 AAAGGCTTTGACTTTACTCATGGTGGCAGGAGAATCTGGTCTGGGTAATCCACTCTTGTCAACAGCC
 TCTTCTCACTGACTTGTACCGGATCGGAAACTGCTGGGCGCCGAAGAGCGGATCATGCAAACCGTGA
 GATTACTAAGCACGCAGTGGATATAGAAGAGAAGGGAGTGAGGCTGCGGCTCACCATTGTGGACTCCA
 GGATTTGGGGATGCAGTCAACAACAGAGTGTGGAAGCCTGTGGCCGAATACATCGACCAGCAGTTTG
 AGCAGTACTTCCGAGACGAGAGTGGCTGAACCGCAAGAACATCCAGGACAACCGGGTGCAGTGTGCT
 GTACTTCACTCCCCGTTTGGCCACGGGCTCCGGCCATTGGATGTTGAATTCATGAAGGCCCTGCATCAG
 CGGGTCAACATTGTGCCTATCTTGGTAAGGCGGACACTGACGCCCTCTGAAGTGGACCGAAAGAAAT
 GCAAAATCCGGGAGGAGATCGAGCACTTGAATCAAGATCTATCAGTCCCAGACTGTGATTCGGATGA
 GGACGAGGACTTCAAATTACAGGACCAAGCCCTAAAGGAAAGCATCCCATTTGCGGTGATTGGCAGCAAC
 ACTGTGGTAGAAGCCAGGGGCGGAGAGTTCGAGGCCCTCTACCCTTGGGGCATCGTGGAAAGTGGAAA
 ACCCAGGTCACGCGACTTTGTCAAGTTGAGGACGATGCTGGTGGTACCCACATGCAGGACCTAAAGGA
 TGTGACCCGAGAGACACACTACGAGAACTACAGGGCACAGTGTATCCAGAGCATGACCCGGCTAGTAGTG
 AAGGAACGGAATCGAACAACTGACAAGAGAGTGGTACTGACTTCCCTATCCCTGCTGTCCCACCAG
 GGACAGATCCAGAACTGAGAAGCTAATCCGGGAGAAAGACGAAGAGCTGCGGGGATGCAGGAGATGTT
 ACACAAAATCAAAGACAGATGAAGGAGACTCAC

ACGCGTACGCGGCCGCTCGAGCAGAACTCATCTCAGAAGAGGATCTGGCAGCAAATGATATCCTGGATT
 ACAAGGATGACGACGATAAGGTTTAA

Protein Sequence:

>MR227466 representing NM_011129
 Red=Cloning site Green=Tags(s)

MDHSLGWQGNVPEGDTEAGIKHFLEDSSDDAELSKFVKDFPGSEPHYSAESKTRVARPQILEPRPQSPD
 LCDDDFEFRGSLWPQSDSQYFSAPAPLSPSSRPRSPWGKLDPYDSSDDKEYVGFATLPNQVHRKSVK
 KGFDFTLMVAGESLGLKSTLVNSLFLTDLYRDRKLLGAEERIMQTVEITKHAVDIEEKGVRLRLTIVDTP
 GFGDAVNNTWCWKPVAEYIDQQFEYFRDESGLNRKNIQDNRVHCLYFISPFHGLRPLDVEFMKALHQ
 RVNIVPILAKADTLTPPEVDRKKCKIREEIEHFGIKIYQFPDCSDEDEDFKLQDQALKESIPFAVIGSN
 TVVEARGRRVRGRLYPWGI VEVENPGHCDVFKLRTMLVRTHMQDLKDVTRETHYENYRAQCIQSMTRLVV
 KERNRNKLTRESGTFDFIPAVPPGTDPETEKLIREKDEELRRMQEMLHKIQRQMKETH

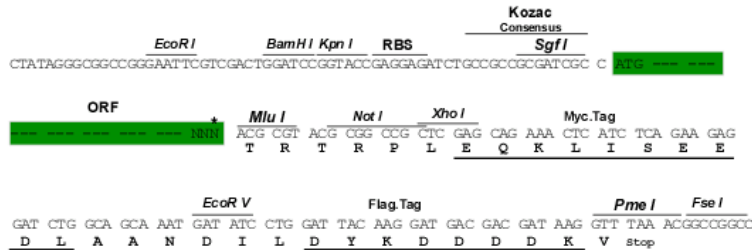
TRTRPLEQKLISEEDLAANDILDYKDDDDKV

Restriction Sites:

SgfI-MluI

Cloning Scheme:

Cloning sites used for ORF Shutting:



* The last codon before the Stop codon of the ORF

ACCN: NM_011129

ORF Size: 1434 bp

OTI Disclaimer: The molecular sequence of this clone aligns with the gene accession number as a point of reference only. However, individual transcript sequences of the same gene can differ through naturally occurring variations (e.g. polymorphisms), each with its own valid existence. This clone is substantially in agreement with the reference, but a complete review of all prevailing variants is recommended prior to use. [More info](#)

OTI Annotation: This clone was engineered to express the complete ORF with an expression tag. Expression varies depending on the nature of the gene.

Components: The ORF clone is ion-exchange column purified and shipped in a 2D barcoded Matrix tube containing 10ug of transfection-ready, dried plasmid DNA (reconstitute with 100 ul of water).

Reconstitution Method:

1. Centrifuge at 5,000xg for 5min.
2. Carefully open the tube and add 100ul of sterile water to dissolve the DNA.
3. Close the tube and incubate for 10 minutes at room temperature.
4. Briefly vortex the tube and then do a quick spin (less than 5000xg) to concentrate the liquid at the bottom.
5. Store the suspended plasmid at -20°C. The DNA is stable for at least one year from date of shipping when stored at -20°C.

RefSeq: [NM_011129.2](#), [NP_035259.1](#)
RefSeq Size: 1649 bp

RefSeq ORF: 1437 bp

Locus ID: 18952

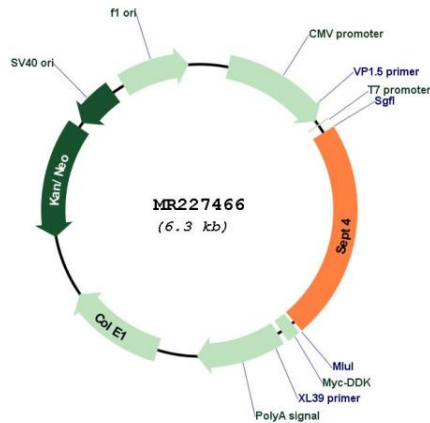
UniProt ID: [P28661](#)

Cytogenetics: 11 C

MW: 55.4 kDa

Gene Summary: Filament-forming cytoskeletal GTPase. Forms a filamentous structure with SEPTIN12, SEPTIN6, SEPTIN2 and probably SEPTIN4 at the sperm annulus which is required for the structural integrity and motility of the sperm tail during postmeiotic differentiation (By similarity). May play a role in cytokinesis (Potential). May play a role in platelet secretion (By similarity). [UniProtKB/Swiss-Prot Function]

Product images:



Circular map for MR227466