

Product datasheet for MR227426

Apoe (NM_009696) Mouse Tagged ORF Clone

Product data:

Product Type:	Expression Plasmids
Product Name:	Apoe (NM_009696) Mouse Tagged ORF Clone
Tag:	Myc-DDK
Symbol:	Apoe
Synonyms:	A; A1255918; Apo-E
Mammalian Cell Selection:	Neomycin
Vector:	pCMV6-Entry (PS100001)
E. coli Selection:	Kanamycin (25 ug/mL)
ORF Nucleotide Sequence:	>MR227426 representing NM_009696 Red=Cloning site Blue=ORF Green=Tags(s)

CTATAGGGCGCCGGGAATTCGTGCGACTGGATCCGGTACCGAGGAGATCTGCCGCCGCGATCGCCGGCGC
GCC

ATGAAGGCTCTGTGGCCGTGCTGTTGGTCACATTGCTGACAGGATGCCTAGCCGAGGGAGACCCGGAGG
TGACAGATCAGCTCGAGTGGCAAAGCAACCAACCCTGGGAGCAGGCCCTGAACCGCTTCTGGGATTACCT
GCGCTGGGTGCAGACGCTGTCTGACCAGGTCCAGGAAGAGCTGCAGAGCTCCCAAGTCACACAAGAAGT
ACGGCACTGATGGAGGACACTATGACGGAAGTAAAGGCTTACAAAAGGAGCTGGAGGAACAGCTGGGTC
CAGTGGCGGAGGAGACACGGGCCAGGCTGGCAAAGAGGTGCAGGCGGCACAGGCCGACTCGGAGCCGA
CATGGAGGATCTACGCAACCGACTCGGGCAGTACCGCAACGAGGTGCACACCATGCTGGCCAGAGCACA
GAGGAGATACGGGCGCGGCTCTCCACACACCTGCGCAAGATGCGCAAGCGCTTGATGCGGGATGCCGATG
ATCTGCAGAAGCGCCTAGCTGTGTACAAGGCAGGGGCACGCGAGGGCGCCGAGCGCGGTGTGAGTGCCAT
CCGTGAGCGCCTGGGGCCTCTGGTGGAGCAAGTGCAGCGCACTGCCAACCTAGGCGCTGGGGCCGCC
CAGCCTCTGCGGATCGCGCCAGGCTTTTGGTGACCGCATCCGAGGGCGGCTGGAGGAAGTGGCAACC
AGGCCCGTGACCGCCTAGAGGAGGTGCGTGAGCACATGGAGGAGGTGCGTCCAAGATGGAGGAACAGAC
CCAGCAAATACGCTGCAGGCGGAGATCTCCAGGCCCGCCTCAAGGGCTGGTTCGAGCCAATAGTGGAA
GACATGCATCGCCAGTGGCAAACCTGATGGAGAAGATACAGGCCCTCTGTGGCTACCAACCCCATCATCA
CCCCAGTGGCCAGGAGAATCAA

ACGCGTACGCGGCCGCTCGAGCAGAAACTCATCTCAGAAGAGGATCTGGCAGCAAATGATATCCTGGATT
ACAAGGATGACGACGATAAGGTTTAA



[View online »](#)

Protein Sequence: >MR227426 representing NM_009696
Red=Cloning site Green=Tags(s)

MKALWAVLLVTLTGCLAEGEPEVTDQLEWQSNQPWEQALNRFWDYLRWVQTLSDQVQEELQSSQVTQEL
 TALMEDTMTEVKAYKKELEEQLGPVAEETRARLGKEVQAAQARLGADMEDLRNRLGQYRNEVHTMLGQST
 EEIRARLSTHLRKMRLMRDADDLQKRLAVYKAGAREGAERGVS AIRERLGPLVEQGRQRTANLGAGAA
 QPLRDRAQAFGDRIRGRLEEVGNQARDRLEEVRHMEEVRSKMEEQTQQIRLQAEIFQARLKGFPEIVE
 DMHRQWANLMEKIQASVATNP IITPVAQENQ

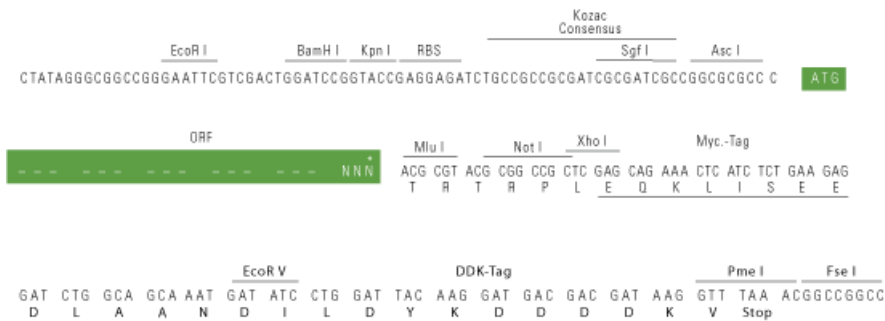
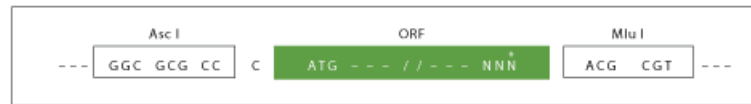
TRTRPLEQKLISEEDLAANDILDYKDDDDKV

Chromatograms: https://cdn.origene.com/chromatograms/mm9008_e07.zip

Restriction Sites: AscI-MluI

Cloning Scheme:

Cloning sites used for ORF Shuttling:



* The last codon before the Stop codon of the ORF

ACCN: NM_009696

ORF Size: 933 bp

OTI Disclaimer: The molecular sequence of this clone aligns with the gene accession number as a point of reference only. However, individual transcript sequences of the same gene can differ through naturally occurring variations (e.g. polymorphisms), each with its own valid existence. This clone is substantially in agreement with the reference, but a complete review of all prevailing variants is recommended prior to use. [More info](#)

OTI Annotation: This clone was engineered to express the complete ORF with an expression tag. Expression varies depending on the nature of the gene.

Components: The ORF clone is ion-exchange column purified and shipped in a 2D barcoded Matrix tube containing 10ug of transfection-ready, dried plasmid DNA (reconstitute with 100 ul of water).

Reconstitution Method:

1. Centrifuge at 5,000xg for 5min.
2. Carefully open the tube and add 100ul of sterile water to dissolve the DNA.
3. Close the tube and incubate for 10 minutes at room temperature.
4. Briefly vortex the tube and then do a quick spin (less than 5000xg) to concentrate the liquid at the bottom.
5. Store the suspended plasmid at -20°C. The DNA is stable for at least one year from date of shipping when stored at -20°C.

Note: Plasmids are not sterile. For experiments where strict sterility is required, filtration with 0.22um filter is required.

RefSeq: [NM_009696.2](#)

RefSeq Size: 1266 bp

RefSeq ORF: 936 bp

Locus ID: 11816

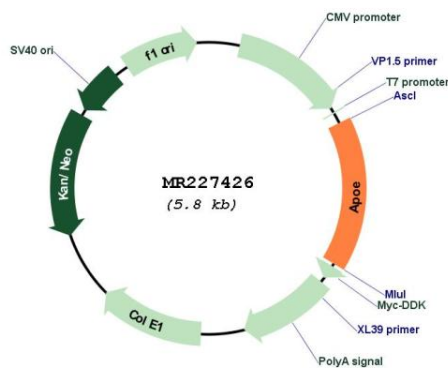
UniProt ID: [P08226](#)

Cytogenetics: 7 9.94 cM

MW: 36.3 kDa

Gene Summary: This gene encodes a member of the apolipoprotein A1/A4/E family of proteins. This protein is involved in the transport of lipoproteins in the blood. It binds to a specific liver and peripheral cell receptor, and is essential for the normal catabolism of triglyceride-rich lipoprotein constituents. Homozygous knockout mice for this gene accumulate high levels of cholesterol in the blood and develop atherosclerosis. Different alleles of this gene have been associated with either increased risk or a protective effect for Alzheimer's disease in human patients. This gene maps to chromosome 7 in a cluster with the related apolipoprotein C1, C2 and C4 genes. [provided by RefSeq, Apr 2015]

Product images:



Circular map for MR227426