

Product datasheet for **MR227396**

Adam10 (NM_007399) Mouse Tagged ORF Clone

Product data:

| | |
|---------------------------|---|
| Product Type: | Expression Plasmids |
| Product Name: | Adam10 (NM_007399) Mouse Tagged ORF Clone |
| Tag: | Myc-DDK |
| Symbol: | Adam10 |
| Synonyms: | 1700031C13Rik; kuz; kuzb; kuzbanian; MADM |
| Mammalian Cell Selection: | Neomycin |
| Vector: | pCMV6-Entry (PS100001) |
| E. coli Selection: | Kanamycin (25 ug/mL) |



[View online »](#)

ORF Nucleotide
Sequence:

>MR227396 representing NM_007399
Red=Cloning site Blue=ORF Green=Tags(s)

TTTTGTAATACGACTCACTATAGGGCGGCCGGGAATTCGTCGACTGGATCCGGTACCGAGGAGATCTGCC
GCC**CGGATCGCC**

ATGGTGTGGCCGACAGTGTAAATCTGCTCCTCTCCTGGGCGCGGGGCTGGGAGGTCAGTATGGAATC
CTTTAAATAAATATATTAGACATTATGAAGGATTATCTTACAATGTGGATTCATTACACCAAAAACACCA
GCGTGCCAAACGAGCAGTCTCACATGAGGACCAGTTTTTACTTCTAGATTTCCATGCTCATGGAAGACAG
TTCAACCTACGAATGAAGAGGGACACTTCCCTTTTGTAGTGAATTTAAAGTAGAAACATCAAATAAAG
TACTTGATTATGATACCTCTCATATTTACTGGACATATTTATGGTGAAGAAGGAGCTTTAGTCATGG
GTCTGTCAATGATGGAAGATTTGAAGTTTTCATCAAGACTCGTGGTGGCAGCTTTTACATTGAGCCAGCA
GAGAGATACATTAAGATCGAATCCTGCCATTTCACTCTGTCTTTATCATGAAGATGATATTAATATC
CCCATAAATACGGCCACAGGGGGCTGTGCAGATCACTCCGTTTTTAAAGGATGAGGAAGTACCAAT
GACTGGAGTAGAGGAAGGAGCCCGGCACATCCAGAGAAGCATGCTGCTAGTAGTGGTCTGAGCTCCTG
AGGAAAAACGCACAACCTCTGGCTGAAAGAAATCTTGTGAGCTCTATATCCAGACAGATCACCTGTTCT
TTAAATACTATGGAACACGAGAAGCTGTGATTGCTCAGATATCCAGTCATGTTAAAGCAATTGATACAAT
TTACCAGACTACAGACTTCTCCGGAATCCGTAACATCAGCTTCATGGTGAACGCATAAGAATCAATACA
ACCTCTGATGAAAAAGACCTACAAATCCTTTCCGTTTCCCAATATTGGTGTGGAGAAGTTCCTGGAGT
TGAATTCAGCAGAATCATGATGACTACTGCCTGGCCTATGTCTTCACAGACCGGGATTTTGTATGATGG
TGTTCTTGGTCTGGCCTGGGTTGGAGCACCTTCAGGAAGCTCTGGGGGAATATGTGAGAAAAGCAAGTTG
TATTCAGATGGCAAGAAGAAGTCATTGAACACAGGCATCATTACTGTTTCCAGAACTATGGCTCCCATGTGC
CTCCCAAAGTCTCTCATATTACGTTTGTCTCATGAAGTTGGACATAAAGTTGGATCTCCCATGATTCTGG
AACAGAGTGTACTCCAGGAGAGTCTAAGAACTTAGGACAAAAAGAAAATGGCAATTACATCATGTATGCA
AGAGCAACATCTGGGACAAACTTAACAACAACAATTTTCACTCTGCAGCATTAGAAAACATAAGCCAAG
TGCTTGAGAAGAAGGAACAACGTGTTTTGTTGAATCTGGCCAGCCTATCTGTGGAACGGGATGGTGGGA
ACAAGGGGAAGAGTGTGACTGTGGCTACAGTGACCAGTGCAAAGATGATTGCTGCTTCGATGCCAACCCAG
CCAGAGGGGAAGAAATGCAAGCTGAAGCCTGGGAAGCAGTGCAAGTCCGAGTCAAGGACCCTGCTGTACAG
CACAGTGTGCATTCAAGTCAAAGTCTGAAAAGTCCCGGGATGATTCTGACTGTGCAAAGGAAGGGATATG
CAATGGCTTCACAGCCCTTTGCCAGCATCTGATCCCAAGCCCACTTTACAGACTGTAAAGGCACACA
CAAGTGTGCATTAATGGCAATGTGCAGGTTCTATTTGTGAAAAGTATGACTTGGAGGAGTGCACCTGTG
CCAGCTCTGATGGCAAAGATGATAAGGAATTATGCCATGTTTGTGTCATGAAGAAAATGGCTCCATCAAC
TTGTGCCAGTACAGGCTCTTTGCAGTGGAGCAAGCAGTTCAGTGGTCCGACTATCACTCTGCAGCCGGGC
TCTCCATGTAATGACTTCAGAGGCTACTGTGATGTTTTTATGCGGTGCAGATTAGTAGATGCTGATGGCC
CTCTAGCTAGGCTGAAAAAGCCATTTTGTCCACAACCTATGAAAACATTGCTGAGTGGATTGTGGC
TCACTGGTGGGACAGTACTGCTTATGGGAATTGCCCTGATCATGTTAATGGCTGGATTATCAAGATTTGC
AGTGTTCACACTCCAAGTAGTAATCCAAGTTGCCGCTCCTAAACCCTCCAGGCACCTTAAAGAGGA
GGAGACCCACAGCCCATTCAGCAGCCCCCGCTCAGAGGCCCGGAGAGAGTTATCAAATGGGACACAT
GCGACGC

ACGCGTACGCGGCCGCTCGAGCAGAACTCATCTCAGAAGAGGATCTGGCAGCAATGATATCCTGGATT
ACAAGGATGACGACGATAAGGTTTAA

Protein Sequence: >MR227396 representing NM_007399
 Red=Cloning site Green=Tags(s)

MVLPTVLILLLSWAAGLGGQYGNPLNKYIRHYEGLSYNVDSLHQKHQRAKRAVSHEDQFLLLDFHAHGRQ
 FNLRMKRDTSLSDFEFKETSNTKVLVDYDTSIIYTGHIYGEESFSGHSVIDGRFEGFIKTRGGTFYIEPA
 ERYIKDRILPFHSVIYHEDDINYPHKYGPQGCCADHSVFERMRKYQMTGVEEGARAHPEKHAASSGPELL
 RKKRTTLAERNTCQLYIQTDHLFFKYGTREAVIAQISSHVKAIDTIYQTDFSGIRNISFMVKRIRINT
 TSDEKDPTNPFRRPNIGVEKFLELNSEQNHDDYCLAYVFTDRDFDDGVLGLAWVGAPSGSSGGICEKSKL
 YSDGKKKSLNTGIITVQNYGSHVPPKVSHITFAHEVGHNFSGPHDSGTECTPGESKNLGQKENGNYIMYA
 RATSGDKLNNNKFSLCSIRNISQVLEKKRNCFVESGQPICGNGMVEQGEECDGYSQCKDDCCFDANQ
 PEGKKCKLKPGKQCSPSQGPCCTAQCAFKSKSEKCRDSDCAKEGICNGFTALCPASDPKPNFTDCNRHT
 QVCINGQCAGSICEKYDLEECTASSDGKDDKELCHVCCMKMAPSTCASTGSLQWSKQFSGRTITLQPG
 SPCNDFRQYCDVFMRCRLVDADGPLARLKKAIFSPQLYENIAEWIVAHWWAVLLMGIALIMLMAGFIKIC
 SVHTPSSNPKLPPKPLPGTLKRRRPPQPIQQPPRQRPRESYQMGHMRR

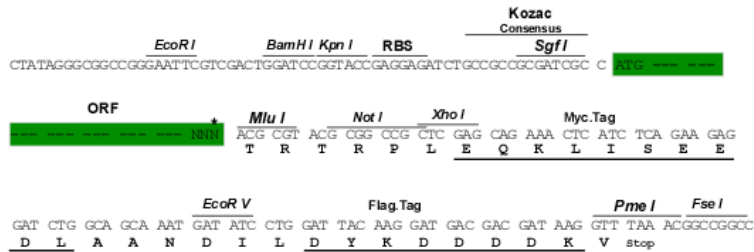
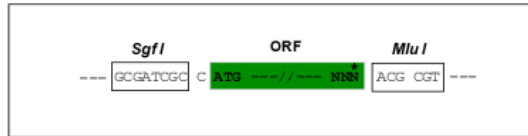
TRTRPLEQKLISEEDLAANDILDYKDDDDKV

Chromatograms: https://cdn.origene.com/chromatograms/mm9013_d05.zip

Restriction Sites: SgfI-MluI

Cloning Scheme:

Cloning sites used for ORF Shuttling:



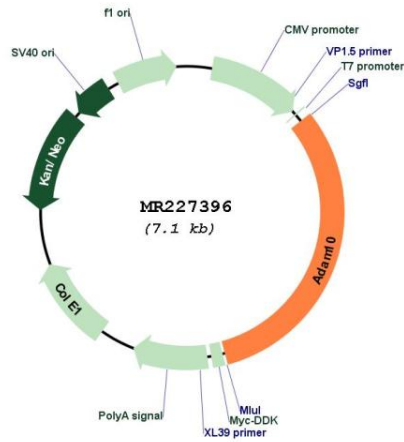
* The last codon before the Stop codon of the ORF

ACCN: NM_007399

ORF Size: 2247 bp

| | |
|-------------------------------|--|
| OTI Disclaimer: | <p>Due to the inherent nature of this plasmid, standard methods to replicate additional amounts of DNA in E. coli are highly likely to result in mutations and/or rearrangements. Therefore, OriGene does not guarantee the capability to replicate this plasmid DNA. Additional amounts of DNA can be purchased from OriGene with batch-specific, full-sequence verification at a reduced cost. Please contact our customer care team at custsupport@origene.com or by calling 301.340.3188 option 3 for pricing and delivery.</p> <p>The molecular sequence of this clone aligns with the gene accession number as a point of reference only. However, individual transcript sequences of the same gene can differ through naturally occurring variations (e.g. polymorphisms), each with its own valid existence. This clone is substantially in agreement with the reference, but a complete review of all prevailing variants is recommended prior to use. More info</p> |
| OTI Annotation: | <p>This clone was engineered to express the complete ORF with an expression tag. Expression varies depending on the nature of the gene.</p> |
| Components: | <p>The ORF clone is ion-exchange column purified and shipped in a 2D barcoded Matrix tube containing 10ug of transfection-ready, dried plasmid DNA (reconstitute with 100 ul of water).</p> |
| Reconstitution Method: | <ol style="list-style-type: none">1. Centrifuge at 5,000xg for 5min.2. Carefully open the tube and add 100ul of sterile water to dissolve the DNA.3. Close the tube and incubate for 10 minutes at room temperature.4. Briefly vortex the tube and then do a quick spin (less than 5000xg) to concentrate the liquid at the bottom.5. Store the suspended plasmid at -20°C. The DNA is stable for at least one year from date of shipping when stored at -20°C. |
| RefSeq: | NM_007399.4 |
| RefSeq Size: | 4605 bp |
| RefSeq ORF: | 2250 bp |
| Locus ID: | 11487 |
| UniProt ID: | O35598 |
| Cytogenetics: | 9 39.53 cM |
| MW: | 84.4 kDa |
| Gene Summary: | <p>This gene encodes a member of a disintegrin and metalloprotease (ADAM) family of endoproteases that play important roles in various biological processes including cell signaling, adhesion and migration. The encoded preproprotein undergoes proteolytic processing to generate a mature enzyme that is involved in the proteolytic release of membrane-bound proteins in a process called ectodomain shedding. Mice lacking the encoded protein die in utero with multiple defects of the developing central nervous system, somites, and cardiovascular system. [provided by RefSeq, May 2016]</p> |

Product images:



Circular map for MR227396