

Product datasheet for **MR227378**

Kcnip4 (NM_030265) Mouse Tagged ORF Clone

Product data:

Product Type: Expression Plasmids
Product Name: Kcnip4 (NM_030265) Mouse Tagged ORF Clone
Tag: Myc-DDK
Symbol: Kcnip4
Synonyms: AV032399; Calp; Calp250; KChIP4; KChIP4a
Mammalian Cell Selection: Neomycin
Vector: pCMV6-Entry (PS100001)
E. coli Selection: Kanamycin (25 ug/mL)
ORF Nucleotide Sequence: >MR227378 representing NM_030265
Red=Cloning site Blue=ORF Green=Tags(s)

TTTTGTAATACGACTCACTATAGGGCGGCCGGAATTCGTCGACTGGATCCGGTACCGAGGAGATCTGCC
GCC**CGATCGCC**

ATGAACCTGGAGGGGCTTGAAATGATAGCAGTTCTGATCGTCATTGTGCTTTTTGTTAAATTATTGGAAC
AGTTTGGGCTGATTGAAGCAGGTTTAGAAGACAGCGTGAAGATGAGCTGGAGATGGCTACTGTCAGGCA
TCGGCCTGAAGCCCTGGAGCTGCTGGAGGCCAGAGCAAATTCACCAAGAAAGAGCTTCAGATTCTTTAC
AGAGGATTTAAGAATGAATGCCCCAGTGGTGTGTTAATGAAGAACTTTCAAGGAGATTTACTCACAGT
TCTTTCCACAGGGAGACTCCACCACATATGCACATTTTCTTTCAATGCATTCGACACGGACCACAATGG
AGCTGTGAGCTTTGAGGATTTCAACAAAGTCTTTCCATTTTGCTTCGAGGGACAGTACAAGAAAACTC
AACTGGGCATTTAATTTGTATGACATAAAACAAAGATGGCTACATCACTAAAGAAGAAATGCTGGACATAA
TGAAAGCAATCTACGACATGATGGGGAAATGCACATACCCGGTCTCAAGGAAGATGCTCCCGACAGCA
TGTGGAGACGTTCTCCAGAAGATGGACAAAAATAAAGATGGTGTGCTTACCATAGATGAGTTTCATTGAA
AGTTGCCAAAAAGATGAAAACATAATGCGCTCCATGCAGCTCTTTGAAAAATGTGATC

ACGCGTACGCGGGCGCTCGAGCAGAACTCATCTCAGAAGAGGATCTGGCAGCAAATGATATCCTGGATT
ACAAGGATGACGACGATAAGGTTTAA



[View online »](#)

Protein Sequence: >MR227378 representing NM_030265
Red=Cloning site Green=Tags(s)

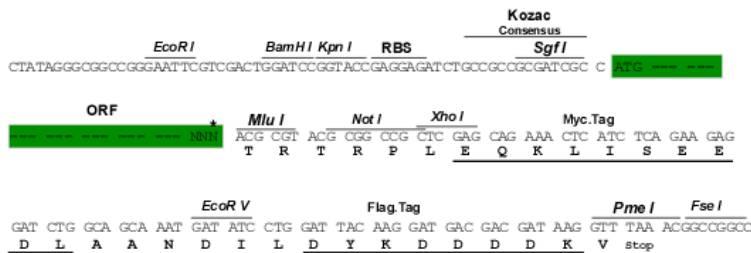
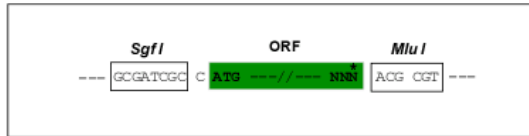
MNLEGLEMIAVLIVIVL FVKLLEQFGLIEAGLEDSVEDELEMATVRRHPEALELLEAQSFKTKELQILY
 RGFKNECPSGVVNEETFKEIYSQFFPQGDSTTYAHFLNADFDDHNGAVSFEDFIKGLSILLRGTVQEKL
 NWAFLNYDINKDGYITKEEMLDIMKAIYDMMGKCTYPVLKEDAPRQHVETFFQKMDKNKDGVVITIDEFIE
 SCQKDENIMRSMQLFENVI

TRTRPLEQKLISEEDLAANDILDYKDDDDKV

Restriction Sites: SgfI-MluI

Cloning Scheme:

Cloning sites used for ORF Shuttling:



* The last codon before the Stop codon of the ORF

ACCN: NM_030265

ORF Size: 687 bp

OTI Disclaimer: The molecular sequence of this clone aligns with the gene accession number as a point of reference only. However, individual transcript sequences of the same gene can differ through naturally occurring variations (e.g. polymorphisms), each with its own valid existence. This clone is substantially in agreement with the reference, but a complete review of all prevailing variants is recommended prior to use. [More info](#)

OTI Annotation: This clone was engineered to express the complete ORF with an expression tag. Expression varies depending on the nature of the gene.

Components: The ORF clone is ion-exchange column purified and shipped in a 2D barcoded Matrix tube containing 10ug of transfection-ready, dried plasmid DNA (reconstitute with 100 ul of water).

Reconstitution Method:

1. Centrifuge at 5,000xg for 5min.
2. Carefully open the tube and add 100ul of sterile water to dissolve the DNA.
3. Close the tube and incubate for 10 minutes at room temperature.
4. Briefly vortex the tube and then do a quick spin (less than 5000xg) to concentrate the liquid at the bottom.
5. Store the suspended plasmid at -20°C. The DNA is stable for at least one year from date of shipping when stored at -20°C.

RefSeq: [NM_030265.3](#), [NP_084541.3](#)

RefSeq Size: 2188 bp

RefSeq ORF: 690 bp

Locus ID: 80334

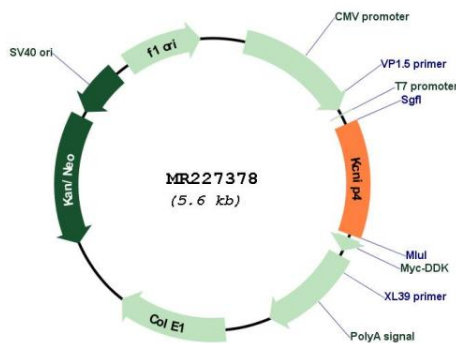
UniProt ID: [Q6PHZ8](#)

Cytogenetics: 5 B3

MW: 27 kDa

Gene Summary: Regulatory subunit of Kv4/D (Shal)-type voltage-gated rapidly inactivating A-type potassium channels, such as KCND2/Kv4.2 and KCND3/Kv4.3 (PubMed:19109250). Modulates channel expression at the cell membrane, gating characteristics, inactivation kinetics and rate of recovery from inactivation in a calcium-dependent and isoform-specific manner. [UniProtKB/Swiss-Prot Function]

Product images:



Circular map for MR227378