

Product datasheet for MR227346L3

Itga6 (NM_008397) Mouse Tagged Lenti ORF Clone

Product data:

Product Type:	Expression Plasmids
Product Name:	Itga6 (NM_008397) Mouse Tagged Lenti ORF Clone
Tag:	Myc-DDK
Symbol:	Itga6
Synonyms:	5033401O05Rik; AI115430; Cd49f; VLA-6
Mammalian Cell Selection:	Puromycin
Vector:	pLenti-C-Myc-DDK-P2A-Puro (PS100092)
E. coli Selection:	Chloramphenicol (34 ug/mL)
ORF Nucleotide Sequence:	The ORF insert of this clone is exactly the same as(MR227346).
Restriction Sites:	SgfI-MluI
Cloning Scheme:	

Cloning sites used for ORF Shuttling:



* The last codon before the Stop codon of the ORF.

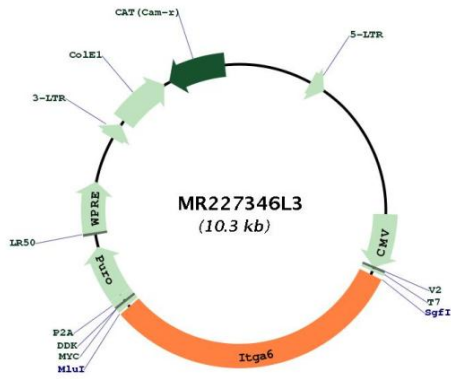
ACCN:	NM_008397
ORF Size:	3219 bp



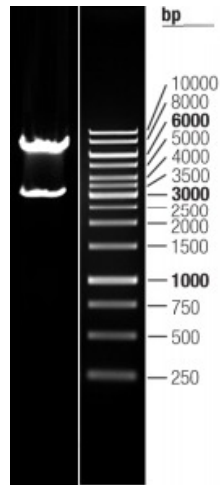
[View online »](#)

OTI Disclaimer:	The molecular sequence of this clone aligns with the gene accession number as a point of reference only. However, individual transcript sequences of the same gene can differ through naturally occurring variations (e.g. polymorphisms), each with its own valid existence. This clone is substantially in agreement with the reference, but a complete review of all prevailing variants is recommended prior to use. More info
OTI Annotation:	This clone was engineered to express the complete ORF with an expression tag. Expression varies depending on the nature of the gene.
Components:	The ORF clone is ion-exchange column purified and shipped in a 2D barcoded Matrix tube containing 10ug of transfection-ready, dried plasmid DNA (reconstitute with 100 ul of water).
Reconstitution Method:	<ol style="list-style-type: none">1. Centrifuge at 5,000xg for 5min.2. Carefully open the tube and add 100ul of sterile water to dissolve the DNA.3. Close the tube and incubate for 10 minutes at room temperature.4. Briefly vortex the tube and then do a quick spin (less than 5000xg) to concentrate the liquid at the bottom.5. Store the suspended plasmid at -20°C. The DNA is stable for at least one year from date of shipping when stored at -20°C.
RefSeq:	NM_008397.3 , NP_032423.2
RefSeq Size:	4205 bp
RefSeq ORF:	3222 bp
Locus ID:	16403
Cytogenetics:	2 42.79 cM
Gene Summary:	This gene encodes a protein that is a member of the integrin superfamily. Integrins are transmembrane receptors involved cell adhesion and signaling, and they are subdivided based on the heterodimer formation of alpha and beta chains. This protein has been shown to heterodimerize with beta 4 to bind laminin and to form the main component of hemidesmosomes, which mediate attachment of epithelia to basement membranes. In mouse, deficiency of this gene is associated with absence of hemidesmosomes, severe skin blistering, and early post-natal death. In humans mutations of this gene are associated with epidermolysis bullosa. Alternative splicing results in multiple transcript variants that encode different protein isoforms. [provided by RefSeq, May 2013]

Product images:



Circular map for MR227346L3



Double digestion of MR227346L3 using SgfI and MluI