

Product datasheet for **MR227329**

Scnn1b (NM_011325) Mouse Tagged ORF Clone

Product data:

Product Type:	Expression Plasmids
Product Name:	Scnn1b (NM_011325) Mouse Tagged ORF Clone
Tag:	Myc-DDK
Symbol:	Scnn1b
Mammalian Cell Selection:	Neomycin
Vector:	pCMV6-Entry (PS100001)
E. coli Selection:	Kanamycin (25 ug/mL)



[View online »](#)

ORF Nucleotide Sequence:

>MR227329 representing NM_011325
 Red=Cloning site Blue=ORF Green=Tags(s)

TTTTGTAATACGACTCACTATAGGGCGGCCGGGAATTCGTCGACTGGATCCGGTACCGAGGAGATCTGCC
 GCC**CGGATCGCC**

ATGCCAGTGAAGAAGTACCTCCTGAAGTGCCTGCACCGGCTGCAGAAGGGCCAGGCTACACCTACAAGG
 AGCTGCTAGTGTGGTACTGCAATAACACCAACACCCACGGCCCCAAACGCATCATCTGTGAGGGGCCAA
 GAAGAAGGCCATGTGGTTCTGTCTACGCTGCTCTTCGCCTGCCTGGTGTGCTGGCAGTGGGGAGTCTTC
 ATCCAGACCTACCTGAGCTGGGAGGTACAGCTCTCGCTCTCCATGGGCTTCAAGACGATGAACCTCCCGG
 CGGTACCGTCTGCAATTCAGCCCTTCCAGTACTCCAAGGTCAAGCACTTGCTCAAGGACTTGGATGA
 GCTAATGGAGGCAGTCTGGAAAAGATTCTGGCTCCAGAGGCCAGCCACAGCAACACCACCAGGACCCTG
 AACTTTACCATCTGGAACACACACCCCTGGTCTTATTGATGAGCGGAACCTGACCACCCGGTGGTTC
 TCAATTTGTTGGGGACAGCCACAACAGCAGCAACCCGGCTCCAGGAAGCACCTGCAATGCCAGGGATG
 CAAAGTGGCCATGAGGCTGTGCAGTGCCAATGGAAGTGTGTACCTTGGGAACCTCACCAGTGCCACC
 CAGGCCGTAAGTGTGATACATCTGCAGGCCACCAACATCTTCTCACAAGTGCTTCTCAGGACCTGG
 TGGGGATGGGCTATGCCCTGATCGCATAATCCTAGCTTGCCTGTTTGGAAACAGAGCCCTGCAGTATCG
 GAACCTTACGCCTATCTTCTACCCTGATTATGGCAACTGTACATCTTCAACTGGGGCATGACAGAGGAG
 ACACCTTCTTCTGCCAACCTGGGACTGAATTTGGTCTCAAGTTGATCCTGGACATCGGTGAGGAGGACT
 ATGTCCCCTTCTTGGTCCACAGCAGGGGCTAGGCTGATGCTTCATGAGCAGAGGACGTACCCCTTCAT
 TAGAGAGGAGGGCATCTATGCCATGGCAGGAAGTGAAGCTGATGTTGGGGTGGTGGACAAGCTGCAA
 CGCAAGGGGGAGCCCTACAGTCCCTGCACCATGAACGGCTCCGATGTTGCCATAAAGAACCTCTACAGTG
 TCTACAACACCACCTATTCCATCCAGGCCTGTCTTATTCTGTTTCCAAGACCACATGATCCGTAACCTG
 CAGTTGTGGCCACTACTTATACCCACTGCCTGAAGGAGAGAAATACTGCAACAACAGGGACTTCCCAGAC
 TGGGCCTATTGCTATCTAAACCTGCAGATGAGTGTGACCCAGAGAGAGACCTGCCTCAGCATGTGCAAGG
 AGTCTGCAATGACACCCAGTATAAGATGACCATCTCCATGGCTGACTGGCCATCTGAGGCCTCTGAGGA
 TTGGATCTTACATGCTCTGCTCAGGAGCGGGACCAGAGCTCGAATATCACCCCTGAGCAGGAAGGGTATT
 GTCAAGCTCAATATCTACTTCCAAGAGTTCAACTACCGTACCATTGAGGAATCTCCAGCCAACAATATTG
 TGTGGCTGCTCTAACCTGGGGGGCCAGTTGGCTTCTGGATGGGGGGCTCGGTGCTGTGCCTCATTGA
 GTTTGGGGAGATCATTATCGACTTCAATTTGGATCACCATCATCAAGCTGGTGGCCTCCTGCAAAGGCCTG
 CGCAGGAGGGCCACAGGCACCCTACTGCCCCACCGCCACTGTGGCTGAGCTGGTAGAGGCCACA
 CCAACTTTGGCTTCCAGCCTGACACAACAGCTGCAGGCCCCACGGCGAGGTCTACCCTGACCAACAGAC
 TCTGCCATCCCAGGGACTCCACCCCAACTATGACTCCCTGAGGCTGCAGCCGCTGGACACCATGGAG
 TCGGACAGTGAGGTGGAGGCCATC

ACGCGTACGCGGCCGCTCGAGCAGAAACTCATCTCAGAAGAGGATCTGGCAGCAATGATATCCTGGATT
 ACAAGGATGACGACGATAAGGTTTAA

Protein Sequence: >MR227329 representing NM_011325
 Red=Cloning site Green=Tags(s)

MPVKKYLKCLHRLQKGPGYTYKELLVWYCNNTNTHGPKRIICEGPKKKAMWFLLTLLFACLVCWQWGVF
 IQTYLSWEVSVLSMGFKTMNFPVAVTVCNSSFQYSKVKHLLKDLDELMEAVLEKILAPEASHSNTTRTL
 NFTIWNHTPLVLIDERNPDHPVVLNLFGDSHNSSNPAPGSTCNAQGCKVAMRLCSANGTVCTLRNFTSAT
 QAVTEWYILQATNIFSQVLPQDLVGMGYAPDRIILACLFGTEPCSHRNFTPIFYPDYGNICYIFNWGMTEE
 TLPSPANPGTEFGLKLILDIGQEDYVPFLASTAGARLMLHEQRTYPIFIREGGIYAMAGTETSIGVLVDKLQ
 RKGEPYSPCTMNGSDVAIKNLYSYNTTYSIQACLHSCFQDHMIRNCSCGHLYPLPEGEKYCNNRDFPD
 WAYCYLNLQMSVTQRETCLSMCKESCNDTQYKMTISMADWPSEASEDWILHVLQERDQSSNITLSRKGI
 VKLNIYQEFNYRTIEESPANNIVLLSNLGGQGFWMGGSVLCLIEFGEI IIDFIWITIIKLVASCKGL
 RRRRPQAPYTGPPPTVAELVEAHTNFGFQPDTTSCRPHGEVYPDQQLTLPPTPPNYDSLRLQPLDTME
 SDSEVEAI

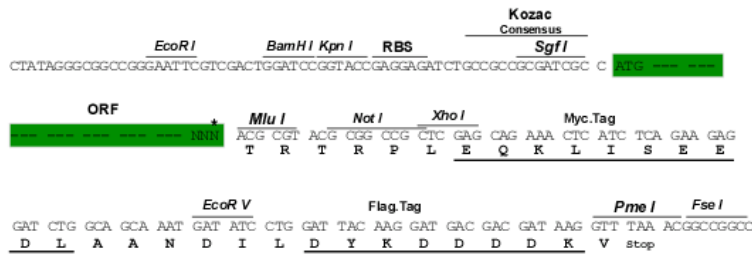
TRTRPLEQKLI SEEDLAANDILDYKDDDDKV

Chromatograms: https://cdn.origene.com/chromatograms/mm9014_c06.zip

Restriction Sites: Sgfl-MluI

Cloning Scheme:

Cloning sites used for ORF Shuttling:



* The last codon before the Stop codon of the ORF

ACCN: NM_011325

ORF Size: 1914 bp

OTI Disclaimer: Due to the inherent nature of this plasmid, standard methods to replicate additional amounts of DNA in E. coli are highly likely to result in mutations and/or rearrangements. Therefore, OriGene does not guarantee the capability to replicate this plasmid DNA. Additional amounts of DNA can be purchased from OriGene with batch-specific, full-sequence verification at a reduced cost. Please contact our customer care team at custsupport@origene.com or by calling 301.340.3188 option 3 for pricing and delivery.

The molecular sequence of this clone aligns with the gene accession number as a point of reference only. However, individual transcript sequences of the same gene can differ through naturally occurring variations (e.g. polymorphisms), each with its own valid existence. This clone is substantially in agreement with the reference, but a complete review of all prevailing variants is recommended prior to use. [More info](#)

OTI Annotation: This clone was engineered to express the complete ORF with an expression tag. Expression varies depending on the nature of the gene.

Components: The ORF clone is ion-exchange column purified and shipped in a 2D barcoded Matrix tube containing 10ug of transfection-ready, dried plasmid DNA (reconstitute with 100 ul of water).

Reconstitution Method:

1. Centrifuge at 5,000xg for 5min.
2. Carefully open the tube and add 100ul of sterile water to dissolve the DNA.
3. Close the tube and incubate for 10 minutes at room temperature.
4. Briefly vortex the tube and then do a quick spin (less than 5000xg) to concentrate the liquid at the bottom.
5. Store the suspended plasmid at -20°C. The DNA is stable for at least one year from date of shipping when stored at -20°C.

RefSeq: [NM_011325.2](#), [NP_035455.1](#)

RefSeq Size: 2694 bp

RefSeq ORF: 1917 bp

Locus ID: 20277

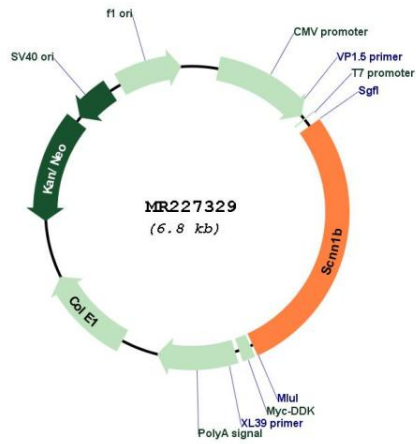
UniProt ID: [Q9WU38](#)

Cytogenetics: 7 65.07 cM

MW: 72.6 kDa

Gene Summary: Sodium permeable non-voltage-sensitive ion channel inhibited by the diuretic amiloride. Mediates the electrodiffusion of the luminal sodium (and water, which follows osmotically) through the apical membrane of epithelial cells. Plays an essential role in electrolyte and blood pressure homeostasis, but also in airway surface liquid homeostasis, which is important for proper clearance of mucus. Controls the reabsorption of sodium in kidney, colon, lung and sweat glands. Also plays a role in taste perception.[UniProtKB/Swiss-Prot Function]

Product images:



Circular map for MR227329