

Product datasheet for MR227297

Elavl4 (NM_010488) Mouse Tagged ORF Clone

Product data:

Product Type: Expression Plasmids
 Product Name: Elavl4 (NM_010488) Mouse Tagged ORF Clone
 Tag: Myc-DDK
 Symbol: Elavl4
 Synonyms: Elav; Hud; PNEM
 Mammalian Cell Selection: Neomycin
 Vector: pCMV6-Entry (PS100001)
 E. coli Selection: Kanamycin (25 ug/mL)
 ORF Nucleotide Sequence: >MR227297 representing NM_010488
 Red=Cloning site Blue=ORF Green=Tags(s)

TTTTGTAATACGACTCACTATAGGGCGGCCGGAATTCGTCGACTGGATCCGGTACCGAGGAGATCTGCC
 GCCCGCATCGCC

ATGGAGTGGAAATGGCTTGAAGATGATAATTAGCACCATGGAGCCTCAGGTGTCAAATGGACCGACATCCA
 ATACAAGCAATGGACCTCCAGCAACAACAGAACTGTCTTCTCCCATGCAGACAGGCGCCGACAGAC
 TGACAGCAAAACCAACCTCATCGTCAACTATTTACCCAGAAATATGACCAAGAGGAATTCAGGAGTCTC
 TTTGGGAGCATTGGTAAATAGAATCCTGCAAACCTCGTGAGAGACAAAATCACAGGACAGAGTTAGGGT
 ATGGATTTGTTAACTATATTGATCCAAAGGATGCAGAGAAAGCCATCAACACTTTAAATGGACTCAGACT
 CCAGACCAAAACCATAAAGGTGTCTACGCCCGCCCAAGCTCGGCCTCGATCAGGGATGCTAACCTGTAT
 GTTAGTGGCCTTCCCAAGACCATGACCCAGAAGGAGCTGGAGCAGCTTTTCTCTCAATACGGTCGCATCA
 TCACCTCACGCATCCTGGTTGATCAAGTCACAGGGGTCTCTAGAGGGGTGGGATTCATCCGCTTTGATAA
 GAGGATTGAGGCAGAAGAAGCCATCAAAGGACTGAATGGCCAGAAGCCAGCGGTGCTACAGAACCATT
 ACTGTGAAGTTTGCCAACAACCCAGCCAGAAGTCCAGCCAGGCCCTGCTCTCCAGCTGTACCAGTCCC
 CCAACAGGCGATACCCTGGCCCTCTCCACCACCAGGCTCAAAGATTGAGGCTGGACAATTTGCTTAATAT
 GGCCTATGGCGTAAAGAGACTGATGTCTGGACCAGTCCCCCTTCTGCTTGTCCCCCAGGTTCTCCCCA
 ATCACCATTGACGGGATGACAAGTCTTGTGGGAATGAACATCCCTGGTCACACAGGACAGGCTGGTGCA
 TCTTCGTCTATAACCTGTCCCCTGATTCTGATGAGAGTGTCTCTGGCAGCTCTTTGGCCCTTTGGCGC
 AGTGAACAACGTCAAGGTGATCCGTGACTTCAACACCAACAAGTGAAGGATTGCGCTTCGTACCCATG
 ACCAACTACGATGAGGCAGCCATGGCCATCGCCAGCCTCAATGGCTATCGCCTGGGAGACAGAGTGTTC
 AAGTTTCTTTAAACCAACAAGCCCAAAATCC

ACGCGTACGCGGCCGCTCGAGCAGAACTCATCTCAGAAGAGGATCTGGCAGCAAATGATATCCTGGATT
 ACAAGGATGACGACGATAAGGTTTAA



Protein Sequence: >MR227297 representing NM_010488
 Red=Cloning site Green=Tags(s)

MEWNLKMIISTMEPQVSNQPTSNTSNGPSSNNRNCPSMQTGAATDDSKTNLIVNYLPQNMTQEEFRSL
 FGSIGEIESCKLVRDKITGQSLGYGFVNYIDPKDAEKAINTLNGRLQTKTIKVSYPARPSSASIRDANLY
 VSGLPKTMTQKELEQLFSQYGRITSRILVDQVTGVSARGVGFIRFDKRIEAEAAIKGLNGQKPSGATEPI
 TVKFANNPSQKSSQALLSQLYQSPNRRYPGPLHHQAQRFRLDNLLNMAYGVKRLMSGPVPPSACPPRFSP
 ITIDGMTSLVGMNIPGHTGTGWCIFVYNLSPDSDESVLWQLFGPFGAVNNVKVIRDFNTNKCKGFGFVTM
 TNYDEAAMAIASLNGYRLGDRVLQVSFKTNKAHKS

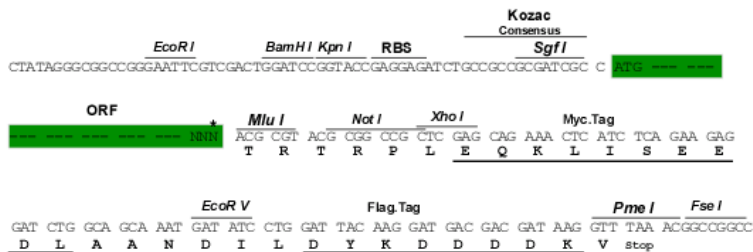
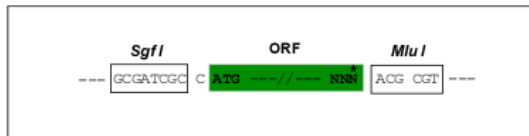
TRTRPLEQKLISEEDLAANDILDYKDDDDKV

Restriction Sites:

Sgfl-MluI

Cloning Scheme:

Cloning sites used for ORF Shuttling:



* The last codon before the Stop codon of the ORF

ACCN: NM_010488

ORF Size: 1155 bp

OTI Disclaimer: The molecular sequence of this clone aligns with the gene accession number as a point of reference only. However, individual transcript sequences of the same gene can differ through naturally occurring variations (e.g. polymorphisms), each with its own valid existence. This clone is substantially in agreement with the reference, but a complete review of all prevailing variants is recommended prior to use. [More info](#)

OTI Annotation: This clone was engineered to express the complete ORF with an expression tag. Expression varies depending on the nature of the gene.

Components: The ORF clone is ion-exchange column purified and shipped in a 2D barcoded Matrix tube containing 10ug of transfection-ready, dried plasmid DNA (reconstitute with 100 ul of water).

Reconstitution Method:

1. Centrifuge at 5,000xg for 5min.
2. Carefully open the tube and add 100ul of sterile water to dissolve the DNA.
3. Close the tube and incubate for 10 minutes at room temperature.
4. Briefly vortex the tube and then do a quick spin (less than 5000xg) to concentrate the liquid at the bottom.
5. Store the suspended plasmid at -20°C. The DNA is stable for at least one year from date of shipping when stored at -20°C.

RefSeq: [NM_010488.4](#), [NP_034618.2](#)

RefSeq Size: 4094 bp

RefSeq ORF: 1158 bp

Locus ID: 15572

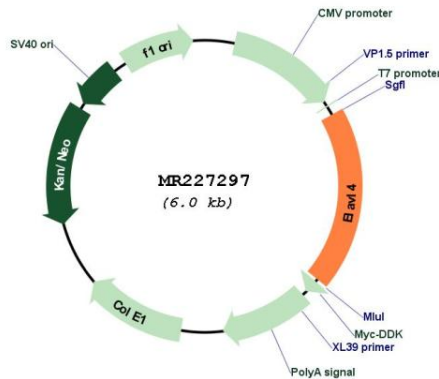
UniProt ID: [Q61701](#)

Cytogenetics: 4 51.42 cM

MW: 42.8 kDa

Gene Summary: May play a role in neuron-specific RNA processing. Protects CDKN1A mRNA from decay by binding to its 3' UTR. Binds to AU-rich sequences (AREs) of target mRNAs, including VEGF and FOS mRNA (By similarity).[UniProtKB/Swiss-Prot Function]

Product images:



Circular map for MR227297