

## Product datasheet for **MR227262**

### Parvb (NM\_133167) Mouse Tagged ORF Clone

#### Product data:

**Product Type:** Expression Plasmids  
**Product Name:** Parvb (NM\_133167) Mouse Tagged ORF Clone  
**Tag:** Myc-DDK  
**Symbol:** Parvb  
**Synonyms:** affixin; AI595373; AW742462; D15Gsk1  
**Vector:** pCMV6-Entry (PS100001)  
**E. coli Selection:** Kanamycin (25 ug/mL)  
**Cell Selection:** Neomycin  
**ORF Nucleotide Sequence:** >MR227262 ORF sequence  
**Red=Cloning site Blue=ORF Green=Tags(s)**

TTTTGTAATACGACTCACTATAGGGCGGCCGGAATTCGTCGACTGGATCCGGTACCGAGGAGATCTGCC  
GCC**GCGATCGCC**

ATGTCCTCGCGCCACCACGGTCGCCACCCCGGGCCCCAAGATGAAGAAGGACGAGTCTTTCTTGG  
GCAAGTTGGCGGCACACTGGCAAGGAAGAAGAAGACCAGGGAGGTGACTGACTTACAGGAAGAAGCAA  
GAGCGCCATCAACTCTCAATGGCCCCGGCTTTGGTGGACATTCACCCTGAAGACACCCAGCTAGAGGAG  
AATGAGGAGCGTACCATGATCGATCCCACCTCTAGAGAAGACCCCAAGTTCAAGGAGTTGGTCAAGGTAC  
TTCTGGACTGGATCAACGATGTGCTGGCAGAGGAGCGCATCATTGTGAAGCAGCTGGAGGAGACCTGTA  
CGATGGCCAGGTGCTCCAGAACTTCTGGAAAAGCTGGCGCACTGCAAGCTGAATGTGGCAGAGGTGACG  
CAGTCCGAGATCGGGCAGAAGCAGAAGTTGCAGACGGTTCTGGAAGCCGTGCAAGACCTGCTTCGGCCCC  
ATGGCTGGCCGCTGCGTTGGAATGTGGACTCTATCCATGGGAAGAACCTAGTGGCCATTCTGCATCTCT  
CGTCTCCCTGGCCATGCACTTCAGGGCCCCCATTACCTTCTGAGCATGTCACCGTGCAGGTGGTGGTC  
GTTCCGAAGCGAGAAGGCTTGTGCACTCCAGCCACATCTCAGAGGAGCTGACCAGACCACAGAGATCA  
TGATGGGCCGGTTTGAGCGGGACGCCTTCGATACTCTTTTCGACCACGCCCGGACAAGCTCAACCTTGT  
GAAGAAGTCTCTCATCAGTTTTGTGAACAAACCTGAATAAGCTAAACTTGGAGGTGACTGACCTGGAG  
ACCCAGTTTGAGATGGTGTGTACCTAGTTCTACTTCTGGGCCTTCTTGAAGACTACTTTGTCCCCCTTC  
ACAACCTTACCTGACTCCTGACAGCTTTGACCAGAAGGTGCACAACGTGGCCTTTGCCTTTGAACTGAT  
GCTGGATGGAGCCTCAAGAAGCCCAAGGCACGCCCTGAAGATGTGGTGAAGTGGACCTCAAGTCCACT  
CTGCGGGTCTTTACACGCTGTTACCAAGTACAAGGATGTGGAG

**ACGCGT**ACGCGGCCGCTCGAGCAGAACTCATCTCAGAAGAGGATCTGGCAGCAATGATATCCTGGATT  
ACAAGGATGACGACGATAAGGTTTAA



[View online »](#)

Protein Sequence: >MR227262 protein sequence  
 Red=Cloning site Green=Tags(s)

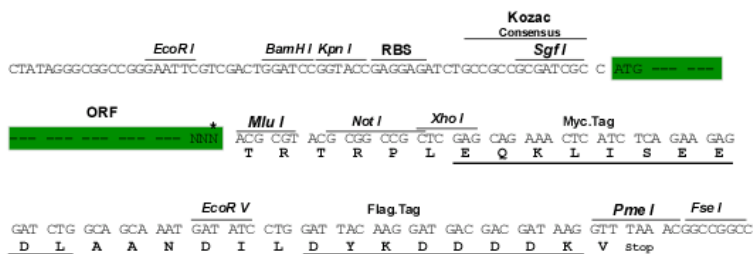
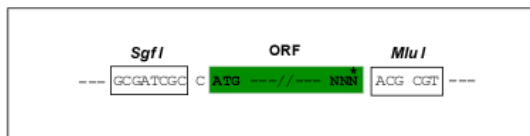
MSSAPPRSPTRAPKMKKDESFLGKLGGLTARKKKTREVTDLQEEGKSAINSPMAPALVDIHPEDTQLEE  
 NEERTMIDPTSREDPKFKELVKVLLDWINDVLAERIIIVKQLEEDLYDGQVLQKLEKLAHCKLNVAEVT  
 QSEIGQKQKLQTVLEAVQDLLRPHGWPLRWVDSIHGKNLVAILHLLVSLAMHFRAPIHLPEHVTVQVVV  
 VRKREGLLHSSHISEELTTTTEIMMGRFERDAFDTLFDHAPDKLNLVKKSLITFVNKHLNKNLNEVTDLE  
 TQFADGVYLVLLGLLEDYFVPLHNHYLTPDSFDQKVHNVAFAFELMLDGGLKKPKARPEDVYVNLDLKST  
 LRVLYTLFTKYKDVE

TRTRPLEQKLISEEDLAANDILDYKDDDDKV

Restriction Sites: SgfI-MluI

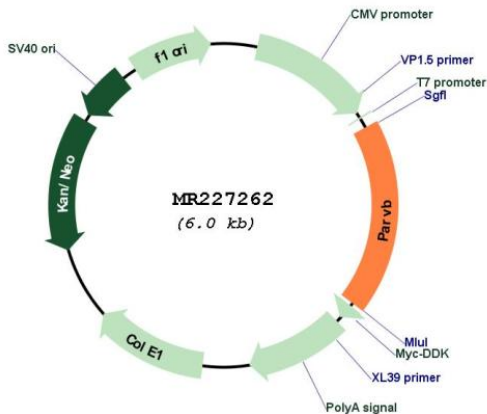
Cloning Scheme:

Cloning sites used for ORF Shuttling:



\* The last codon before the Stop codon of the ORF

Plasmid Map:



ACCN: NM\_133167

<b>ORF Size:</b>	1098 bp
<b>OTI Disclaimer:</b>	The molecular sequence of this clone aligns with the gene accession number as a point of reference only. However, individual transcript sequences of the same gene can differ through naturally occurring variations (e.g. polymorphisms), each with its own valid existence. This clone is substantially in agreement with the reference, but a complete review of all prevailing variants is recommended prior to use. <a href="#">More info</a>
<b>OTI Annotation:</b>	This clone was engineered to express the complete ORF with an expression tag. Expression varies depending on the nature of the gene.
<b>Components:</b>	The ORF clone is ion-exchange column purified and shipped in a 2D barcoded Matrix tube containing 10ug of transfection-ready, dried plasmid DNA (reconstitute with 100 ul of water).
<b>Reconstitution Method:</b>	<ol style="list-style-type: none"><li>1. Centrifuge at 5,000xg for 5min.</li><li>2. Carefully open the tube and add 100ul of sterile water to dissolve the DNA.</li><li>3. Close the tube and incubate for 10 minutes at room temperature.</li><li>4. Briefly vortex the tube and then do a quick spin (less than 5000xg) to concentrate the liquid at the bottom.</li><li>5. Store the suspended plasmid at -20°C. The DNA is stable for at least one year from date of shipping when stored at -20°C.</li></ol>
<b>RefSeq:</b>	<a href="#">NM_133167.3</a> , <a href="#">NP_573395.1</a>
<b>RefSeq Size:</b>	3705 bp
<b>RefSeq ORF:</b>	1098 bp
<b>Locus ID:</b>	170736
<b>UniProt ID:</b>	<a href="#">Q9ES46</a>
<b>Cytogenetics:</b>	15 E2
<b>MW:</b>	41.7 kDa
<b>Gene Summary:</b>	Adapter protein that plays a role in integrin signaling via ILK and in activation of the GTPases CDC42 and RAC1 by guanine exchange factors, such as ARHGEF6. Is involved in the reorganization of the actin cytoskeleton and formation of lamellipodia. Plays a role in cell adhesion, cell spreading, establishment or maintenance of cell polarity, and cell migration (By similarity).[UniProtKB/Swiss-Prot Function]