

Product datasheet for MR227243

Ccr7 (NM_007719) Mouse Tagged ORF Clone

Product data:

Product Type:	Expression Plasmids
Product Name:	Ccr7 (NM_007719) Mouse Tagged ORF Clone
Tag:	Myc-DDK
Symbol:	Ccr7
Synonyms:	CC-CKR-7; CCR-7; CD197; Cdw197; Cmkbr7; EBI1; Ebi1h
Mammalian Cell Selection:	Neomycin
Vector:	pCMV6-Entry (PS100001)
E. coli Selection:	Kanamycin (25 ug/mL)
ORF Nucleotide Sequence:	>MR227243 representing NM_007719 Red=Cloning site Blue=ORF Green=Tags(s)

TTTTGTAATACGACTCACTATAGGGCGGCCGGAATTCGTCGACTGGATCCGGTACCGAGGAGATCTGCC
GCC**CGATCGC**C

ATGGACCCAGGGAAACCCAGGAAAAACGTGCTGGTGGTGGCTCTCCTTGTCAATTTCCAGGTGTGCTTCT
GCCAAGATGAGGTCACCGATGACTACATCGGCCGAGAATACCACGGTGGACTACACCCTGTACGAGTCGGT
GTGCTTCAAGAAGGATGTGCGGAACCTTAAGGCCTGGTTCCTGCCTCATGTATTCTGTCATCTGCTTC
GTGGCCCTGCTCGCAACGGGCTGGTGATACTGACGTACATCTATTTCAAGAGGCTCAAGACCATGACGG
ATACCTACCTGCTCAACCTGGCCGTGGCAGACATCCTTTTCTCCTAATTCTTCCCTTCTGGCCCTACAG
CGAAGCCAAGTCCTGGATCTTTGGCGTCTACCTGTGTAAGGGCATCTTTGGCATCTATAAGTTAAGCTTC
TTCAGCGGGATGCTGCTGCTCCTATGCATCAGCATTGACCGCTACGTAGCCATCGTCCAGGCCGTGTCGG
CTCATCGCCACCGCGCCCGCTGCTTCTCATCAGCAAGCTGTCCTGTGTGGGCATCTGGATGCTGGCCCT
CTTCTCTCCATCCCGGAGCTGCTACAGCGGCCTCCAGAAGAACAGCGCGGAGGACACGCTGAGATGC
TCACTGGTCAGTGCCCAAGTGGAGGCCTTGATCACCATCCAAGTGGCCAGATGGTTTTTGGGTTCTTAG
TGCCTATGCTGGCTATGAGTTTCTGCTACCTCATTATCATCCGTACCTTGGCTCCAGGCACGCAACTTTGA
GCGGAACAAGGCCATCAAGGTGATCATTGCCGTGGTGGTAGTCTTCATAGTCTTCCAGCTGCCCTACAAT
GGGTGGTCTGGCTCAGACGGTGGCCAACTTCAACATCAACCAATAGCAGCTGCGAAACCAGCAAGCAGC
TCAACATTGCCTATGACGTACCTACAGCCTGGCCTCCGCTCCGCTGCTGGTCAACCCTTTCTTGTATGC
CTTCATCGGCGTCAAGTTCGCGACGACCTCTTCAAGCTCTTCAAGGACTTGGGCTGCTCAGCCAGGAA
CGGCTCCGGCACTGGTCTTCTGCGGCATGTACGGAACGCTCGGTGAGCATGGAGCGGAGACCACCA
CAACCTTCTCCCG

AG**CGGACCG**ACGCGTACGCGGCCGCTCGAGCAGAACTCATCTCAGAAGAGGATCTGGCAGCAAATGATATCC
TGGATTACAAGGATGACGACGATAAGGTTTAA



[View online »](#)

Protein Sequence: >MR227243 representing NM_007719
Red=Cloning site Green=Tags(s)

MDPGKPRKNVLVALLVIFQVFCQDEVTDYIGENTTVDYTLYESVCFKDVNRNFKAWFLPLMYSVICF
 VGLLGNGLVILTYIYFKRLKMTDTYLLNLAVADILFLLILPFWAYSEAKSWIFGVYLCCKGIFGIYKLSF
 FSGMLLLLCSIDRYVAIVQAVSAHRHRARVLLISKLSVGIWMLALFLSIPPELLYSGLQKNSGEDTLRC
 SLVSAQVEALITIQVAQMVFGFLVPLAMSFICYLIIIRTLLQARNFERNKAIKVIIAVVVVFIVFQLPYN
 GVVLAQTVANFNITNSSCETSKQLNIAIDYVYSLASVRCCVNPFLYAFIGVKFRSDLFKLFDLGLCSQE
 RLRHWSSCRHVRNASVSMEAETTTTFSP

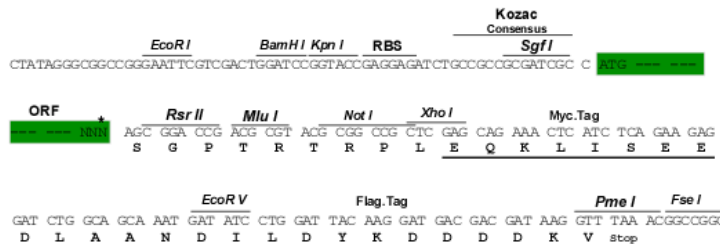
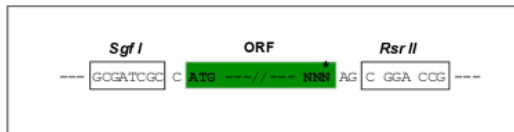
SGPTRRRLEQKLI SEEDLAANDILDYKDDDDKV

Chromatograms: https://cdn.origene.com/chromatograms/ja1592_f10.zip

Restriction Sites: SgfI-RsrII

Cloning Scheme:

Cloning sites used for ORF Shuttling:



* The last codon before the Stop codon of the ORF

ACCN: NM_007719

ORF Size: 1131 bp

OTI Disclaimer: The molecular sequence of this clone aligns with the gene accession number as a point of reference only. However, individual transcript sequences of the same gene can differ through naturally occurring variations (e.g. polymorphisms), each with its own valid existence. This clone is substantially in agreement with the reference, but a complete review of all prevailing variants is recommended prior to use. [More info](#)

OTI Annotation: This clone was engineered to express the complete ORF with an expression tag. Expression varies depending on the nature of the gene.

Components: The ORF clone is ion-exchange column purified and shipped in a 2D barcoded Matrix tube containing 10ug of transfection-ready, dried plasmid DNA (reconstitute with 100 ul of water).

Reconstitution Method:

1. Centrifuge at 5,000xg for 5min.
2. Carefully open the tube and add 100ul of sterile water to dissolve the DNA.
3. Close the tube and incubate for 10 minutes at room temperature.
4. Briefly vortex the tube and then do a quick spin (less than 5000xg) to concentrate the liquid at the bottom.
5. Store the suspended plasmid at -20°C. The DNA is stable for at least one year from date of shipping when stored at -20°C.

RefSeq: [NM_007719.2](#), [NP_031745.2](#)

RefSeq Size: 1975 bp

RefSeq ORF: 1137 bp

Locus ID: 12775

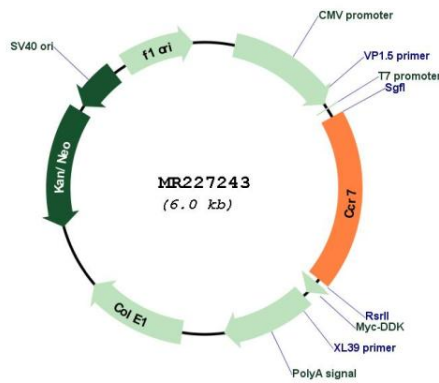
UniProt ID: [P47774](#)

Cytogenetics: 11 D

MW: 42.9 kDa

Gene Summary: Receptor for the MIP-3-beta chemokine.[UniProtKB/Swiss-Prot Function]

Product images:



Circular map for MR227243